



Account Number 9941810000  
 Bill Date Jan 21, 2025

Previous Balance \$12,984.41  
 Payment Received -\$12,984.41  
 Balance Forward \$0.00  
 Current Charges \$15,924.97

**Summary of your current charges**

**Account Name:** GREEN LAKE COUNTY JUSTICE CENTER  
**Next Meter Reading:** Feb 19, 2025 - Feb 24, 2025  
**Service Address:** 571 COUNTY ROAD A JUSTICE  
 GREEN LAKE, WI 54941

**Amount Due on Feb 10, 2025**  
**\$15,924.97**

If paid after Feb 10, 2025 **\$16,084.22**



**Electric**

**\$15,144.73**

**Electric Meter: 470001306**  
**Meter Reading**

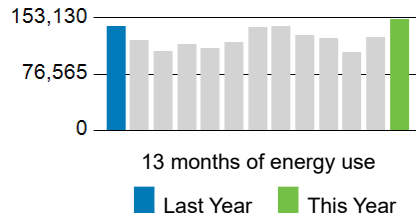
Jan 21 17,905  
 Dec 19 17,704

201 kWh

**Multiplier**

201 kWh  
 X 750  
 150,750 kWh

**Your Electric Usage (in kWh)**



Avg. Temp 24°F 20°F  
 Degree Days 1,344 1,486  
 Avg. Daily Use This Month = 4,568.18 kWh



**Gas**

**\$780.24**

**Gas Meter: 000820657**  
**Meter Reading**

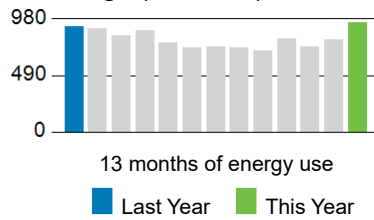
Jan 21 37,602  
 Dec 19 36,691

911 CCF

**Heat Factor Adjustment**

911 CCF  
 X 1.045334  
 952 therms

**Your Gas Usage (in therms)**



Avg. Temp 24°F 20°F  
 Degree Days 1,344 1,486  
 Avg. Daily Use This Month = 28.85 therms

**Questions? Contact us at:**

- alliantenergy.com
- 1.800.ALLIANT (1.800.255.4268)
- P.O. Box 3062 Cedar Rapids IA 52406-3062

**Take care of it online**

You can pay your bill, view your energy use and sign up for payments options in My Account at [alliantenergy.com/myaccount](http://alliantenergy.com/myaccount)

(See page 2 for details of charges)

Please return this portion with your payment.



PO Box 351  
 Cedar Rapids, IA 52406 - 0351



<b>Amount Due</b> Feb 10, 2025	<b>\$</b>	<b>15,924.97</b>
Amount enclosed if Different From Above	<b>\$</b>	_____

If paid after Feb 10, 2025 \$ 16,084.22

Account Number 9941810000

GREEN LAKE COUNTY JUSTICE CENTER  
 571 COUNTY ROAD A  
 GREEN LAKE WI 54941-8630

ALLIANT ENERGY/WPL  
 PO BOX 3062  
 CEDAR RAPIDS IA 52406-3062

994181000000000000159249700000000160842229



**Message Board**

**THANK YOU FOR YOUR PAYMENT**

Payment Received	Jan 13, 2025	-\$12,984.41
<b>Total Payments</b>		<b>-\$12,984.41</b>

**Non-Residential Electric Service**

Rate: WI CP1 - Industrial TOD

Billed for: 33 Days

Billing Period	Meter Number	Current Reading	Previous Reading	Metered Units	Multiplier	Usage
Dec 19 - Jan 21	470001306	17,905	17,704	201 kWh	750	150,750 kWh
Dec 19 - Jan 21	470001306	19	12	19 kWh	750	14,250 kWh
High Rate						
Dec 19 - Jan 21	470001306	96	72	96 kWh	750	72,000 kWh
Low Rate						
Dec 19 - Jan 21	470001306	86	85	86 kWh	750	64,500 kWh
Regular Rate						

Bill Factor Proration = 12 Days/33 Days = 0.3636364

Bill Factor Proration = 21 Days/33 Days = 0.6363636

On-Peak Demand 351.000 KW  
Off-Peak Demand 396.000 KW

High Energy Charge	14250.000 kWh X \$0.07848	X 0.3636364	\$406.67
High Energy Charge	14250.000 kWh X \$0.07788	X 0.6363636	\$706.23
Regular Energy Charge	64500.000 kWh X \$0.05372	X 0.3636364	\$1,259.98
Regular Energy Charge	64500.000 kWh X \$0.05325	X 0.6363636	\$2,185.67
Low Energy Charge	72000.000 kWh X \$0.0437	X 0.3636364	\$1,144.15
Low Energy Charge	72000.000 kWh X \$0.0431	X 0.6363636	\$1,974.76
On Peak Demand	351.000 KW X \$16.13	X 0.3636364	\$2,058.77
On Peak Demand	351.000 KW X \$17.07	X 0.6363636	\$3,812.82
Customer Demand Charge	396.000 KW X \$2.60	X 0.3636364	\$374.40
Customer Demand Charge	396.000 KW X \$2.95	X 0.6363636	\$743.40
2024 Fuel Adjustment	150750.000 kWh X \$-0.008293	X 0.3636364	-\$454.61
2025 Fuel Adjustment	150750.000 kWh X \$0.006269	X 0.6363636	\$601.40
Customer Charge	12.000 Days X \$6.23		\$74.76
Customer Charge	21.000 Days X \$6.23		\$130.83

Wisconsin Power and Light, an Alliant Energy Company

Please recycle

**Message Board:**

Paying by check? Go to [alliantenergy.com](http://alliantenergy.com) or call us at 1-800-ALLIANT (800-255-4268) to make a payment with no fee. Paying by credit card? Go to [alliantenergy.com](http://alliantenergy.com) to make a payment with no fee. You can also use Speedpay by calling 1-877-429-4126 (fees may apply).

Questions about your bill? Our bill guides explain all the parts and pieces. Check them out at [alliantenergy.com/understandyourbill](http://alliantenergy.com/understandyourbill)



State-Wide Low-Income Assistance Fee		\$125.50
County Tax	\$15019.23 X 0.5% (Tax Exempt 100%)	\$0.00
Wisconsin Sales Tax	\$15019.23 X 5% (Tax Exempt 100%)	\$0.00
<b>Total Current Charges</b>		<b>\$15,144.73</b>

**Non-Residential Gas Service**

**Rate:** GC2F - Gas General Service, Small Commercial & Industrial 5000 - 20000 **Billed for: 33 Days**  
 Therms

Billing Period	Meter Number	Current Reading	Previous Reading	Metered Units	Multiplier	Heat Factor	Usage
Dec 19 - Jan 21	000820657	37,602	36,691	911 CCF	1	1.045334	952 therms

Bill Factor Proration = 12 Days/33 Days = 0.3636364

Bill Factor Proration = 21 Days/33 Days = 0.6363636

Distribution Charge	952.00 therms X \$0.1523	X 0.3636364	\$52.72
Distribution Charge	952.00 therms X \$0.1501	X 0.6363636	\$90.93
Gas Supply Base Rate	952.00 therms X \$0.6477	X 0.3636364	\$224.22
Gas Supply Base Rate	952.00 therms X \$0.6477	X 0.6363636	\$392.39
Gas Supply Acquisition Charge	952.00 therms X \$0.0152	X 0.3636364	\$5.26
Gas Supply Acquisition Charge	952.00 therms X \$0.0152	X 0.6363636	\$9.21
Gas Supply Market Adj	952.00 therms X \$-0.059730		-\$56.86
Customer Charge	12.000 Days X \$1.8902		\$22.68
Customer Charge	21.000 Days X \$1.8902		\$39.69
County Tax (100% exempt)	\$780.24 X 0.5%		\$0.00
Wisconsin Sales Tax (100% exempt)	\$780.24 X 5%		\$0.00
<b>Total Current Charges</b>			<b>\$780.24</b>



31399-O-0873

# alliantenergy.com Illuminate

Bright ideas to power your life

Interstate Power and Light/Wisconsin Power and Light We provide this natural gas safety information in fulfillment of federal requirements detailed in RP1162.



## PowerHouse<sup>®</sup> TIP of the MONTH



### Take a free online home energy assessment

Welcome the new year with savings. Take a free online home energy assessment to find easy ways to lower your usage and make your home more energy efficient. It's quick, simple and helpful for any household. Start saving today and enjoy a cozier home all year long.

Visit [powerhousetv.com](http://powerhousetv.com) for details.



### Never try to use a gas oven or range to heat a room

Gas ovens and ranges should only be used for their intended purpose. The appliance can use up all the available oxygen in the air, causing asphyxiation, carbon monoxide poisoning and maybe even death. Always have your gas appliances and heating and venting system professionally installed. This ensures that all connections are secure, all vent pipes and flues are clean and undamaged, and that the appliance is adjusted properly and inspected according to local codes.



### Be safe with fire pits

Never locate a fire pit above a buried gas line! If the fire gets too hot, it could cause the natural gas line below it to leak or melt.

Visit [call811.com](http://call811.com) or call 811 to locate the underground utility lines on your property before you place your pit.

# Electric rates for commercial and farm customers

In Dec. 2024, the Public Service Commission of Wisconsin approved Alliant Energy's 2025 Fuel Cost plan (Docket 6680-ER-104). Effective Jan. 1, 2025, your bill will include a \$0.006269/kilowatt-hour (kWh) surcharge to reflect updated fuel costs and Alliant Energy's previously approved fuel reconciliation adjustment (Docket 6680-FR-2022). The updated fuel adjustment and electric rates effective Jan. 1, 2025 are below.



Effective 1/1/2025		Time-of-use* with water heating (closed)	General service	General service Time-of -use*	General service demand rate	General service nonmetered	Commercial service Time-of-use*	Industrial power at primary or secondary voltage
		Fw-5 (Gw-1)	Gs-1	Gs-3	Gd-1	Gs-4	Cg-2TOD	Cp-1
<b>Daily customer charge (per day)</b>								
Single-phase metering	\$/day	0.4932	0.5589	0.5589	0.5589	0.4089	0.9250	6.2300
Three-phase metering	\$/day		0.8384	0.8384	0.8384		1.1500	
<b>Customer demand charge (per kW) (previous 12 months highest demand)</b>								
Customer demand	\$/kW				2.50		2.95	2.95
<b>Energy charge (per kWh)</b>								
All kWh	\$/kWh		0.13390			0.14400		
High rate	\$/kWh	0.26630		0.23750	0.18450		0.09300	0.07788
Regular rate	\$/kWh	0.18260		0.15450	0.09450		0.06300	0.05325
Low rate	\$/kWh	0.08550		0.07450	0.06850		0.04500	0.04310
Fuel adjustment effective 1/1/2025	\$/kWh	0.006269	0.006269	0.006269	0.006269	0.006269	0.006269	0.006269
<b>Firm demand (per kW)</b>								
On-peak demand: Maximum kW 10 a.m. to 10 p.m.	\$/kW						14.00	17.07
On-peak demand: Maximum kW 10 a.m. to 8 p.m.	\$/kW				9.00			
<b>Other bill components</b>								
Demand energy limiter	\$/kWh limit				0.2200		0.2200	0.2200
<b>Primary service discount</b>								
Primary voltage energy discount	%		2.5%	2.5%	2.5%		2.5%	2.5%
Primary meter customer demand discount	\$/kW				0.23		0.23	0.23
<b>Estimated annual change</b>	<b>% change</b>	<b>3.5%</b>	<b>4.2%</b>	<b>8.4%</b>	<b>9.1%</b>	<b>6.3%</b>	<b>2.7%</b>	<b>4.9%</b>

## \*Time-of-use weekday energy pricing periods

**High rate:** (Summer = Jun. Jul. Aug.) 11 a.m. to 7 p.m.

**High rate:** (Winter = Dec. Jan. Feb.) 5 p.m. to 9 p.m.

**Low rate:** Low rate: 11 p.m. to 6 a.m. weeknights; all hours on weekends and holidays

**Regular rate:** All other hours

Estimated annual change	Traffic signal service	Street lighting service	Decorative lighting service	Area lighting service	Civil defense and fire sirens service	Nonstandard lighting service
	Mz-1	Ms-1	Ms-2	Ms-3	Mz-2	NL-1
<b>% change</b>	<b>6.9%</b>	<b>8.4%</b>	<b>12.6%</b>	<b>1.4%</b>	<b>10.0%</b>	<b>4.3%</b>

Docket 6680-UR-124 final rates. Fuel adjustment reflects Dockets 6680-FR-2022 and 6680-ER-104.

To view approved rates, visit [alliantenergy.com/wisconsinrates](http://alliantenergy.com/wisconsinrates). For rate options Gs-1, Gs-3 and Gd-1, our online rate comparison tool can help you determine the best rate plan based on your previous energy use.

# Natural gas rates for commercial and farm customers

In Dec. 2023, the Public Service Commission of Wisconsin (PSCW) approved new natural gas base rates effective Jan. 1, 2025 (Docket 6680-UR-124). The average impact of the adjustment across all customer rate classes is a reduction of approximately 0.1%. Actual costs will vary depending on your rate class and natural gas usage. At Alliant Energy, we continue to make smart investments that create a cleaner, safer and more reliable energy future. Consistent with our long-range strategic plan, these investments will increase customer value and ensure the continued delivery of cost-effective energy for years to come.

Effective 1/1/2025		Gc-1 Small commercial and industrial	Gc-2 Commercial and industrial	Gc-3 Commercial and industrial	Gc-4 Commercial and industrial	Gc-5 Commercial and industrial	Gc-6 Large commercial and industrial	S-1 Seasonal service	S-1 Seasonal service	S-1 Seasonal service
Bill component	Size in therms (thousands)		5-20	20-200	200-1300	1300-7500	>7500	On season and first 1,000 therms off season	Off season next 2,000 therms <sup>2</sup>	Off season over 3,000 therms <sup>2</sup>
Distribution charge	\$/therm	0.2977	0.1501	0.1287	0.0837	0.0656	0.0483	0.1767	0.1196	0.1000
Gas supply base rate	\$/therm	0.6477	0.6477	0.6477	0.6477	0.6477	0.6477	NA	NA	NA
Gas supply acquisition charge	\$/therm	0.0152	0.0152	0.0141	0.0141	0.0141	0.0141	NA	NA	NA
Customer charge	\$/day	0.4741	1.8902	3.0000	21.3500	36.2500	41.8820	1.8902	1.8902	1.8902
<b>Interruptible option<sup>1</sup></b>										
Gas supply base rate (optional interruptible)	\$/therm	NA	NA	0.4190	0.4190	0.4190	0.4190	0.4190	0.4190	0.4190
Gas supply acquisition charge (optional interruptible)	\$/therm	NA	NA	0.0137	0.0137	0.0137	0.0137	0.0148	0.0148	0.0148
<b>Additional transportation gas service charges</b>										
Administrative charge	\$/day	2.2700	2.2700	2.2700	2.2700	2.2700	2.2700	2.2700	2.2700	2.2700
Remote metering charge	\$/day	1.2400	1.2400	1.2400	1.2400	1.2400	1.2400	1.2400	1.2400	1.2400

Your bill shows separate charges for distribution (what we charge for delivering natural gas) and gas supply (what we pay to acquire natural gas).

The gas supply base rate changes monthly with the gas supply market adjustment the PSCW approves.

If you have questions about the approved rates, visit [alliantenergy.com/wisconsinrates](http://alliantenergy.com/wisconsinrates) or call us at 1-800-ALLIANT (1-800-255-4268).

[1] Only interruptible gas service is available to S-1 Seasonal Ag.

[2] Off season rates apply May 5 – January 4.

# Electric rates for industrial customers



In December 2024, the Public Service Commission of Wisconsin approved Alliant Energy's 2025 Fuel Cost plan (Docket 6680-ER-104). Effective January 1, 2025, your bill will include a \$0.006269/kilowatt-hour (kWh) surcharge to reflect updated fuel costs and Alliant Energy's previously approved fuel reconciliation adjustment (Docket 6680-FR-2022). The updated fuel adjustment and electric rates effective January 1, 2025 are below.

Effective 1/1/2025		General service	General service Time-of-use*	General service Time-of-use* with demand	Commercial service Time-of-use*	Industrial power at primary or secondary voltage	Industrial power at transmission voltage
		Gs-1	Gs-3	Gd-1	Cg-2TOD	Cp-1	Cp-2
<b>Daily customer charge (per day)</b>							
Single-phase metering	\$/day	0.5589	0.5589	0.5589	0.9250	6.2300	35.0000
Three-phase metering	\$/day	0.8384	0.8384	0.8384	1.1500		
<b>Customer demand charge (per kW) (previous 12 months highest demand)</b>							
Customer demand	\$/kW			2.50	2.95	2.95	0.00
<b>Energy charge (per kWh)</b>							
All kWh	\$/kWh	0.13390					
High rate	\$/kWh		0.23750	0.18450	0.09300	0.07788	0.07610
Regular rate	\$/kWh		0.15450	0.09450	0.06300	0.05325	0.05210
Low rate	\$/kWh		0.07450	0.06850	0.04500	0.04310	0.04220
Fuel adjustment effective 1/1/25	\$/kWh	0.006269	0.006269	0.006269	0.006269	0.006269	0.006269
<b>Firm demand (per kW)</b>							
On-peak demand: Maximum kW 10 a.m. to 10 p.m.	\$/kW				14.00	17.07	16.90
On-peak demand: Maximum kW 10 a.m. to 8 p.m.	\$/kW			9.00			
<b>Interruptible demand: Interruptible rider Cp-INT – optional</b>							
Interruptible demand {A} [one hour notice]	\$/kW					12.46	12.43
Interruptible demand {B} [instantaneous]	\$/kW					11.44	11.45
<b>Other bill components</b>							
Demand energy limiter	\$/kWh limit			0.22000	0.22000	0.22000	
High load factor credit	\$/kWh						-0.0045
Reactive power	\$/kVArh						0.001015
<b>Primary service discount</b>							
Primary voltage energy discount	%	2.5%	2.5%	2.5%	2.5%	2.5%	
Primary meter customer demand discount	\$/kW			0.23	0.23	0.23	
<b>Standby and maintenance rider – optional Schedule Cp-2C</b>							
Standby charge [Rider]	\$/kW					4.77	2.00
Standby administration charge	\$/day					6.00	6.00
<b>Estimated annual change</b>	<b>% change</b>	<b>4.2%</b>	<b>8.4%</b>	<b>9.0%</b>	<b>2.7%</b>	<b>4.9%</b>	<b>4.6%</b>

#### \* Time-of-use weekday energy pricing periods

**High rate:** (Summer = Jun. Jul. Aug.) 11 a.m. to 7 p.m.

**High rate:** (Winter = Dec. Jan. Feb.) 5 p.m. to 9 p.m.

**Low rate:** Low rate: 11 p.m. to 6 a.m. weeknights; all hours on weekends and holidays

**Regular rate:** All other hours

Docket 6680-UR-124 final rates. Fuel adjustment reflects Dockets 6680-FR-2022 and 6680-ER-104.

To view approved rates, visit [alliantenergy.com/wisconsinrates](http://alliantenergy.com/wisconsinrates). For rate options Gs-1, Gs-3 and Gd-1, our online rate comparison tool can help you determine the best rate plan based on your previous energy use.

# Natural gas rates for industrial customers

In December 2023, the Public Service Commission of Wisconsin (PSCW) approved new natural gas base rates effective January 1, 2025 (Docket 6680-UR-124). The average impact of the adjustment across all customer rate classes is a reduction of approximately 0.1%. Actual costs will vary depending on your rate class and natural gas usage. At Alliant Energy, we continue to make smart investments that create a cleaner, safer and more reliable energy future. Consistent with our long-range strategic plan, these investments will increase customer value and ensure the continued delivery of cost-effective energy for years to come.

Effective 1/1/2025		Gc-1 Small commercial and industrial	Gc-2 Commercial and industrial	Gc-3 Commercial and industrial	Gc-4 Commercial and industrial	Gc-5 Commercial and industrial	Gc-6 Large commercial and industrial
Bill component	Size in therms (thousands)		5-20	20-200	200-1300	1300-7500	>7500
Distribution charge	\$/therm	0.2977	0.1501	0.1287	0.0837	0.0656	0.0483
Gas supply base rate	\$/therm	0.6477	0.6477	0.6477	0.6477	0.6477	0.6477
Gas supply acquisition charge	\$/therm	0.0152	0.0152	0.0141	0.0141	0.0141	0.0141
Customer charge	\$/day	0.4741	1.8902	3.0000	21.3500	36.2500	41.8820
<b>Interruptible option</b>							
Gas supply base rate (optional interruptible)	\$/therm	NA	NA	0.4190	0.4190	0.4190	0.4190
Gas supply acquisition charge (optional interruptible)	\$/therm	NA	NA	0.0137	0.0137	0.0137	0.0137
<b>Additional transportation gas service charges</b>							
Administrative charge	\$/day	2.2700	2.2700	2.2700	2.2700	2.2700	2.2700
Remote metering charge	\$/day	1.2400	1.2400	1.2400	1.2400	1.2400	1.2400

Your bill shows separate charges for distribution (what we charge for delivering natural gas) and gas supply (what we pay to acquire natural gas). The gas supply base rate changes monthly with the gas supply market adjustment the PSCW approves.

If you have questions about the approved rates, visit [alliantenergy.com/wisconsinrates](http://alliantenergy.com/wisconsinrates) or call us at 1-800-ALLIANT (1-800-255-4268).



## Use natural gas appliances safely

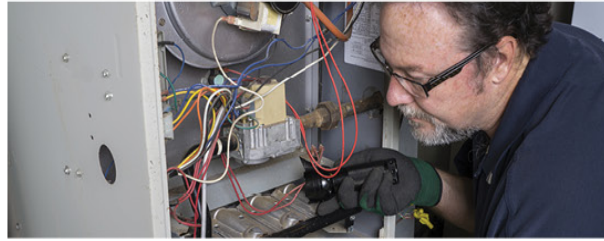
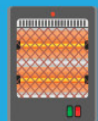
Most gas equipment installed today is designed to be energy efficient. Modern equipment uses electronic ignition systems that eliminate the need for continuously burning pilot lights. This saves energy and reduces dangers. If you have a pilot light out, be sure to call a professional for service.

As with any type of energy, the key to natural gas safety is a combination of education, common sense and a few rules:

- ▶ We recommend you work with a qualified professional to disconnect a gas appliance. Be sure to remove the connector and cap the line.
- ▶ Leave at least 18 inches of air flow distance around a gas furnace or water heater.
- ▶ Keep paints, papers, aerosol sprays and other flammables away from gas appliances.
- ▶ Maintain a clear space around gas appliances.
- ▶ Never store or stack boxes, laundry or other materials around their base.
- ▶ Make sure the vent hood, pipes and flues aren't blocked, cracked or corroded.
- ▶ Keep kids away from gas meters and appliances.
- ▶ Maintain gas pipes and never use them for unintended purposes like hanging clothes.
- ▶ Keep long sleeves, towels and potholders away from the open flame when using a gas range.
- ▶ Set the water heater thermostat to 120 degrees Fahrenheit. Always check the water temperature before placing a child in the bathtub. Never leave a child alone or with other young children in the bathtub.

## Use space heaters safely

Keep at least 36 inches of clearance around space heaters and only use them on level and stable areas free of flammable or combustible materials that can be easily ignited.



## Take care of your appliances and equipment

A qualified professional should check your gas appliances annually. Inspections keep gas appliances safe and efficient, and they reduce risks of carbon monoxide poisoning. Vents for gas appliances must be cleared after a major snow or ice storm to enable proper venting and prevent carbon monoxide accumulation. Install carbon monoxide detectors for added safety.

## Learn to detect gas leaks

Because natural gas is colorless and unscented, a strong rotten-egg smell is added to help you detect a possible gas leak.

Here are three ways you can detect a leak:

1. Smell the odor of rotten eggs. If you don't know the scent, contact us at [alliantenergy.com/gas](http://alliantenergy.com/gas) for a free scratch-and-sniff card.
2. Hear hissing or whistling sounds near a gas appliance, meter or pipeline.
3. See blowing dirt, bubbling water or discolored vegetation in an otherwise green area.



## Don't rely on your nose alone: Get a natural gas detector

Although Alliant Energy adds a distinctive odor to natural gas as a safety precaution to assist in the detection of a leak, your sense of smell might not be enough to detect it.

- ▶ Strong smells in the area, like cooking or chemical odors, can mask the smell of natural gas.
- ▶ Prolonged exposure to the same smell can desensitize you to it (this is called olfactory fatigue).
- ▶ Certain conditions in the soil or pipes can cause the odorant to fade or be stripped out of the gas so that it is not readily detectable.

Individuals with a known inability to smell are especially at risk. If this is you, don't take chances. Get a natural gas detector. Carefully follow the manufacturer's directions for operation, placement and maintenance.

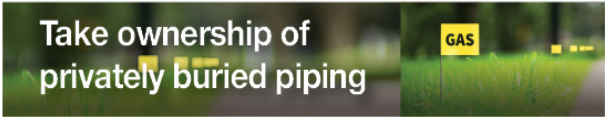


### Know what kind of gas piping you have in your home or building

You may have corrugated stainless steel tubing (CSST) if your home or business was built after 1990 or you've had work done to your natural gas system.

If lightning strikes a structure containing CSST, it could travel along the structure's natural gas piping system and cause a leak or fire.

Have a professional inspect your building or home for CSST. If you find CSST, Alliant Energy recommends having a licensed electrician ensure it is bonded and grounded properly.






### Take ownership of privately buried piping

Your home or business may have privately buried natural gas or fuel lines that run to a garage, grill or pool. These lines are not installed or maintained by Alliant Energy, and customers are responsible for them. Alliant Energy is responsible for the gas line leading to your meter, but any additional lines are your responsibility.

Customers must maintain operation and know the location of buried lines. A qualified technician should regularly inspect it for leaks. If the piping is metallic, inspect it for corrosion. Repair it if it is unsafe or shut off the flow of gas.

Prior to excavating, locate and mark the pipe. Excavating near the pipe should be done by hand.

 <b>If you suspect a gas leak, follow these do's and don'ts</b>	
<div style="background-color: #4caf50; color: white; padding: 5px; border-radius: 15px; display: inline-block; margin-bottom: 10px;">  Do's                 </div> <ul style="list-style-type: none"> <li>▶ Make sure gas appliances are turned all the way off.</li> <li>▶ Contractors: Turn off and abandon equipment.</li> <li>▶ IMMEDIATELY evacuate everyone from the building or area.</li> <li>▶ Leave the area and warn others to stay away.</li> <li>▶ Call 1-800-ALLIANT from a remote location. Do not return until we confirm it is safe.</li> <li>▶ If you hear gas hissing or blowing, which is a more serious issue, evacuate to a remote location and call 911.</li> </ul>	<div style="background-color: #f44336; color: white; padding: 5px; border-radius: 15px; display: inline-block; margin-bottom: 10px;">                     Don'ts  </div> <ul style="list-style-type: none"> <li>▶ Do not try to find or repair the leak or extinguish a burning gas leak.</li> <li>▶ Do not move appliances or machinery.</li> <li>▶ Do not start an engine of any kind.</li> <li>▶ Do not strike matches or create a flame of any kind.</li> <li>▶ Do not use a telephone or cell phone. These can ignite gases or vapors.</li> <li>▶ Do not turn on or off any light, electrical switches or garage door openers. These also can ignite airborne gases.</li> </ul>

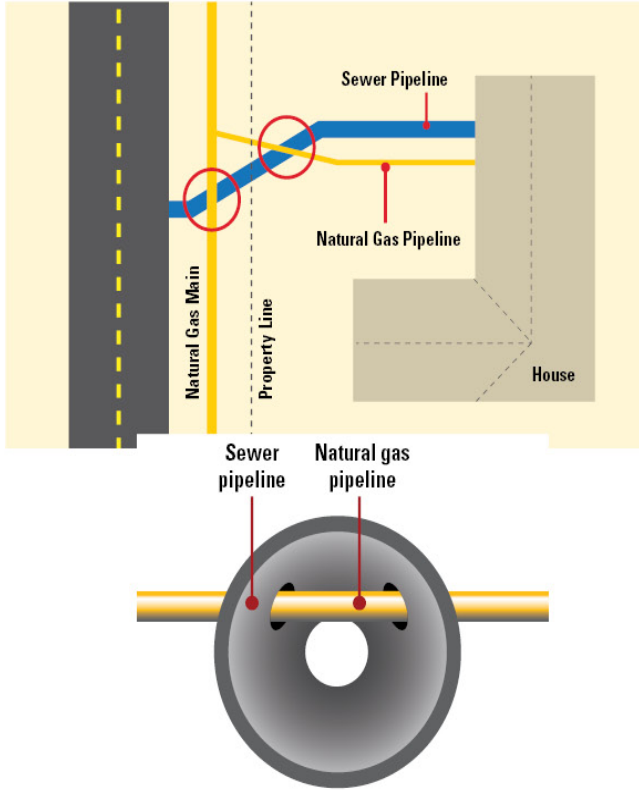


### Keep your meters clear

To operate efficiently, natural gas equipment requires air for safe operation and venting. Do not place vents of household appliances directly above your gas meter. Snow and ice can damage or block natural gas meters and exhaust vents, especially after a major storm. Chimneys and vents on the roof or side of a building must be clear to allow proper venting and prevent accumulation of carbon monoxide or equipment malfunction.

Monitor impact of winter weather on your gas meter; after a storm:

- ▶ Carefully remove snow or debris using your hands or a broom. Kicking or using a shovel could cause damage.
- ▶ Remove icicles hanging from the roof or eaves above the meter.
- ▶ Stop dripping water or freezing rain from building up on the meter. The vent can become plugged when ice and snow melt during the day and refreeze at night.
- ▶ Avoid piling snow on the meter when shoveling or using a snow blower.



## Sewer plugged? It might not be a simple clog

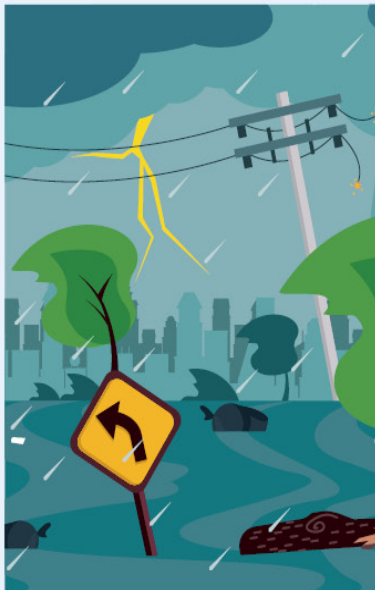
Sewer lines can get damaged when new power lines or natural gas pipes are installed underground.

Sometimes the two lines can intersect. This is called a cross bore.

The problem can go undetected for years. You could be injured trying to clear a clog from a cross bore.

### If a cross bore is discovered:

- ▶ Stop operating any equipment.
- ▶ Evacuate yourself and others.
- ▶ Call 911 and the natural gas company from a remote location.
- ▶ Eliminate any ignition source.



## Be prepared

Disasters can occur anytime, anywhere. Be proactive to minimize risks to people and damage to property.

### Before a disaster:

- ▶ Prepare and practice a disaster plan.
- ▶ Have a professional inspect and repair any gas connections.
- ▶ Know how to turn off gas service at the meter.

### After a disaster:

- ▶ Replace appliances that have been submerged in water.
- ▶ Check for gas leaks. Evacuate and call Alliant Energy from a remote location if you suspect a leak.
- ▶ Call Alliant Energy to resume your gas service. Never do it yourself.

All information contained in this document is the general opinion of Alliant Energy and its affiliates and may not be beneficial in all circumstances. Alliant Energy and its affiliates are not liable in any manner whatsoever to any person or entity relying on or using the information contained in this document. Any person or entity choosing to rely on or use the information contained in this document does so at their own risk.

The energy savings referenced in this publication are estimates only. Actual savings may vary based on climate, home characteristics and other factors.

Alliant Energy is the trade name of Alliant Energy Corporation and its principal utility subsidiaries Wisconsin Power and Light Co. and Interstate Power and Light Co.

