



GREEN LAKE COUNTY HIGHWAY DEPARTMENT

Office: 920-294-4060
FAX: 920-294-4066

Highway Committee Meeting Notice

Date: January 13, 2021 Time: 4:00 pm

The Green Lake County Highway Committee will meet via virtual communication with limited available seating at the Green Lake County Government Center, County Board Room #0902, 571 County Rd A, Green Lake WI

AGENDA

Committee Members

David
Abendroth
Chuck Buss
Dennis
Mulder
Robert
Schweder
Charlie
Wielgosh

Becky Pence,
Secretary

1. Call to Order
2. Certification of Open Meeting Law
3. Pledge of Allegiance
4. Approval of Minutes 10/14/2020
5. Public Comment
6. Ordinance Amending Chapter 257. Vehicles, All-Terrain/Utility-Terrain
7. Purchase of (2) Scale Kiosks
8. Used Snow Blower Purchase
9. North Central Region Mutual Aid
10. Financial Reports
11. Commissioner's Report
12. Future Meeting Date
 - Regular Meeting February 10, 2021
13. Future Agenda items for action & discussion
14. Adjourn

Due to the COVID-19 Pandemic, this meeting will be conducted and available through in person attendance (6 ft. social distancing required and face masks required) or audio/visual communication. Remote access can be obtained through the following link.

Join Zoom Meeting:

<https://zoom.us/j/99184733877?pwd=MldvbzBMRUR0bnFwODJpTDFnMjlNdz09>

Meeting ID: 991 8473 3877

Passcode: 548949

Dial by your location

- +1 301 715 8592 US (Washington D.C)
- +1 312 626 6799 US (Chicago)
- +1 929 436 2866 US (New York)

Kindly arrange to be present, if unable to do so, please notify our office. Sincerely, Becky Pence

Please note: Meeting area is accessible to the physically disabled. Anyone planning to attend who needs visual or Audio assistance, should contact the Highway Office, 920-294-4060 not later than 3 days before date of the meeting.



GREEN LAKE COUNTY

571 County Road A, Green Lake, WI 54941

Original Post Date: 01/08/2021

***Amended 01/13/2021**

****Amended 1/13/21**

The following documents are included in the packet for the Highway Committee on 01/13/2021:

- 1) Agenda
- 2) Minutes of 10/14/2020
- 3) Ordinance Amending Chapter 257. Vehicles, All-Terrain/Utility-Terrain ***Corrected dates**
- 4) Scale Kiosks ***added Purchase Approval Form **Updated (added Option 2)**
- 5) Used Snow Blower
- 6) North Central Region Mutual Aid
- 7) Financial Reports – Equipment, Expenses, Revenues
- 8) Commissioner’s Report

HIGHWAY COMMITTEE MEETING October 14, 2020

The meeting of the Highway Committee was called to order by Chair Mulder at 4:00 PM on Wednesday September 09, 2020 in the County Board Room, and via Zoom format at the Government Center, Green Lake, WI. The requirements of the open meeting law were certified as being met. The Pledge of Allegiance was recited.

Present: David Abendroth, Absent:
Chuck Buss,
Dennis Mulder,
Robert Schweder,
Charlie Wielgosh

Other county employees Present: Barry Mashuda, Highway Commissioner; Becky Pence, Administrative Assistant; Harley Reabe, County Board Chair; Liz Otto, County Clerk; Others Present via Zoom: Dawn Klockow, Corporation Counsel; Cathy Schmit, County Administrator

Approval of Minutes 09/09/2020

Motion/second (Abendroth/Buss) to approve the Minutes of 09/09/2020. All Ayes. Motion Carried.

Discuss and/or Take Action on Amending Chapter 257, All-Terrain/Utility Vehicles to charge a \$200.00 Permit Fee relating to the cost to provide the service of working throughout the application process

Motion/second (Schweder/Wielgosh) to approve a \$200.00 Permit Fee relating to the cost of working throughout the application process. All Ayes. Motion Carried.

Discuss and/or Take Action on Amending Chapter 257, All-Terrain/Utility Vehicles to add "Application for Permit ATV/UTV Routes on a County Trunk Highway will only be accepted in November of each year."

Motion/second (Buss/Abendroth) to approve accepting ATV/UTV Route application only in November of each year. All Ayes. Motion Carried.

Revise ATV/UTV Routes Policy of 9/13/17 to change Safety Criteria (3)(i) from "notification letter" to "publication in papers 2x"

Motion/second (Abendroth/Wielgosh) to approve changing the ATV/UTV Routes Policy Safety Criteria from notification letter to publication in papers 2x. All Ayes. Motion Carried..

Request for Proposals – Traffic Speed Studies

Motion/second (Schroeder/Buss) to approve MSA Professional Services in the amount of \$7,995.00 (which includes Crash Analysis), for the two speed studies on CTH A, Town of Brooklyn from STH 23/49 Intersection to CTH K East Intersection, and CTH F, Town of Berlin from the Berlin City Limits/Forest Ridge Road to CTH V Intersection. All Ayes. Motion Carried.

Equipment Purchases

Bids received for Two Tri-Axle Cab & Chassis (2021 and 2022 Delivery) from:

Packer City International	\$130,101
Quality Truck Care Center	\$260,590
Truck Country	\$257,000

Bids received for Two Tri-Axle Plow Equipment (2021 and 2022 Delivery) from:

Casper's Truck Equipment	\$229,000
Monroe Truck Equipment	\$207,486
Truck Equipment Inc.	\$218,100

Motion/second (Abendroth/Wielgosh) to approve purchasing Two Tri-Axle Cab & Chassis from Quality Truck Care Center for \$260,590, and to approve purchasing Two Tri-Axle Plow Equipment from Monroe Truck Equipment for \$207,486 in 2021 and 2022 respectfully. All Ayes. Motion Carried.

Bids received for (1) Digger Derrick Sign Truck with Attachments from:

Altec Industries	\$268,757
Terex Digger Derricks	\$362,669

Motion/second (Buss/Schweder) to approve purchasing a Digger Derrick Sign Truck with Attachment from Altec Industries in the amount of \$268,757. All Ayes. Motion Carried.

Financial Reports

Highway financial reports were reviewed.

2021 Budget

Committee Members reviewed the 2021 Highway Budget. Discussion held.

Commissioner's Report

Committee reviewed the recent and future activities

Future Committee Meeting Date November 11, 2020.

Adjournment: Chair Mulder adjourned the meeting at 4:33 PM

Submitted by,

Becky Pence.
Highway Committee Secretary

ORDINANCE NO. -2021

Amending Chapter 257. Vehicles, All-Terrain/Utility-Terrain

The County Board of Supervisors of Green Lake County, Green Lake Wisconsin, duly assembled at its regular meeting begun on the 16th day of February 2021, does ordain as follows:

- 1 **WHEREAS**, the ordinance requires that the Highway Commissioner review all
- 2 applications for an ATV/UTV designation for conformance with Highway Department
- 3 policies, the ordinance and all applicable state, federal and local laws, regulations and
- 4 policies; and

- 5 **WHEREAS**, the Highway Commissioner spends a considerable amount of time
- 6 reviewing the application to determine whether the proposed ATV/UTV route is
- 7 appropriate. Review includes, but is not limited to, reviewing the application for
- 8 conformity with County, state and federal laws and policies, driving the proposed route,
- 9 meeting with the Sheriff, meeting with the Traffic Safety Advisory committee and
- 10 preparing a newspaper announcement regarding the proposed route; and,

Roll Call on Ordinance No. -2021

Submitted by Highway Committee:

Ayes , Nays , Absent , Abstain

Passed and Enacted/Rejected this 16th day of February, 2021.

Dennis Mulder, Chair

Charlie Wielgosh, Vice-chair

County Board Chairman

Charles Buss

ATTEST: County Clerk
Approve as to Form:

Robert Schweder

Corporation Counsel

David Abendroth

12 **WHEREAS**, Wis. Stat. §66.0628(2) allows a county to impose a fee provided that the fee
13 bears a reasonable relationship to the service for which the fee is imposed, and may not
14 exceed the County's reasonable direct costs that are associated with the activity that is
15 related to the fee; and

16 **WHEREAS**, the time spent by the Highway Commissioner to review the application, drive
17 the route using a county vehicle, and time spent in meetings requires approximately six (6)
18 hours of the Commissioner's time, and the cost to publish a notice in the newspaper is
19 \$162.00. These are all reasonable expenses that support a small application fee of
20 \$200.00 to offset the costs associated with the Highway Commissioner's duties under the
21 ordinance and the cost to the County to publish notice in the newspaper; and

22 **WHEREAS**, the time spent by the Highway Commissioner reviewing applications means
23 that the Highway Commissioner could be spending a considerable amount of time
24 reviewing applications throughout the year, taking the Highway Commissioner away from
25 important duties relating to the maintenance and safety of County Highways; and,

26 **WHEREAS**, limiting the window in which applications for ATV-UTV routes to a certain
27 time, will ensure that the Highway Commissioner is able to perform his duties efficiently.

28 **NOW, THEREFORE, THE COUNTY BOARD OF SUPERVISORS OF THE COUNTY**
29 **OF GREEN LAKE DOES ORDAIN AS FOLLOWS:**

30 Section 1. Green Lake County Ordinance, No. 18-2017, as amended is hereby amended
31 as follows (deletions in ~~strikeout~~, additions in underline):
32

33 §257-8.A. Anyone requesting a designation shall complete an application on a form
34 prescribed by the Highway Committee in compliance with this chapter and any applicable
35 state statute or administrative code and file the application with the Highway Department.
36 The application form shall be accompanied by a \$200.00 fee for processing the
37 application. Applications will only be accepted for review during the month of November.

38 Section 2. This ordinance shall become effective upon passage and publication.

39 Section 3. The repeal and recreation of any section herein shall not have any effect on
40 existing litigation and shall not operate as an abatement of any action or proceeding then
41 pending or by virtue of the repealed sections.

42 Section 4. All ordinances and parts of ordinances in conflict herewith are hereby
43 repealed.



REQUEST FOR PURCHASE APPROVAL

Item To Be Purchased:

Department:

Account Number:

Governing Committee:

Governing Committee Approval Date:

P&I Approval Date:

Reason for Purchase:



FOND DU LAC: 920.921.6111 FAX: 920.921.7722 • GREEN BAY: 920.662.2680 FAX: 920.662.2681

Quotation # 4609-20

Proposal to: Green Lake County Highway Dept. 570 South Street Green Lake, WI 54941 Attention: Barry Mashuda Phone: 920-229-5116 Fax:	Badger Scale, Inc. 1182 W. Scott St. Fond Du Lac, WI 54936-0629 920-921-6111 or E-mail: johng@badgerscale.com Fax: 920-921-7722 Web: www.badgerscale.com
---	---

QTY	MODEL	EQUIPMENT	TOTAL
Equipment for your Green Lake and Markesan Truck Scales			
2EA	37041	Fairbanks FB2560 Driver Assist Terminal. Includes the following: <ul style="list-style-type: none"> • 31079 Internal Analog Interface • 32019 Vandal Resistant Keyboard • 32083 Proximity Card Reader • 26592Q 100 Proximity Cards • 26422 Heater for Terminal • 26258 Stainless Shroud • 22269 Pole Mount Plate • 34962 4" Thermal Tape Printer • 30023 Heater for Printer • 34964 Thermal Paper 2- Rolls 	\$23,623.56
1EA	INST	Installation to existing Kiosk Poles, Test and Calibration to be Done on a Time and Material Basis. Budgetary Cost - \$4,000.00	Add
Optional Equipment			
2EA	35005	Pair of Wireless Ethernet Bridges Please add: \$1,254.00 per Scale	
Does not include freight or sales tax.			Add

Equipment/Install Total	\$23,623.56 + Installation & Freight
--------------------------------	---

SPECIAL JOB NOTES	Note: Customer to provide Electrician to disconnect conduit and power from existing Terminals and reconnect conduit and power to new Terminals.	
Shipment: 4 weeks after your PO is received.	Warranty: As per manufacturer's warranty.	
Terms: Net 30 days after your order ships. 1 1/2% service charge for balances over 30 days old.	Total Installation/Test/Calibrate/Training Price.	Add
FOB: Factory	Freight is Prepaid and added to your order.	Add
25% Restocking charge – No returns after 30 days.	Sales Tax (%) (Unless exempt for this purchase)	Add
Quotation is valid 30 days from the date issued.	Your Total Investment	

Quoted by: John Grzybowski	Accepted by:
Title: General Service Manager	Title:
Date: 11/17/2020	Date:

FAIRBANKS®

S C A L E S



FB2560 SERIES DAT

DRIVER ASSIST TERMINAL

A versatile Driver Assist Terminal that streamlines weighing processes and reduces operating costs.

Fairbanks.com

FB2560 SERIES DAT

DRIVER ASSIST TERMINAL

• Agriculture • Solid Waste • Aggregates • Recycling • Mining • Natural Resources

The FB2560 Series Driver Assist Terminal is designed to speed the vehicle weighing process and reduce associated operating costs. By allowing drivers to remain inside their vehicles, the FB2560 DAT also eliminates safety concerns and liabilities that can occur when drivers walk across scale platforms and traffic lanes.

The FB2560 DAT's reduction in weighment time increases scale throughput and overall efficiency. The FB2560 DAT also enables 24-hour operation without additional labor costs and has built-in ethernet connectivity that easily interfaces scale transaction data with a company's existing computer network.

Large, full-color graphic display with touch screen. Large text and simple to understand prompts allow drivers to process weighments with ease.

Function keys allow drivers to recall Product, Customer or inbound weight information at the touch of a button.

Optional metalized vandal-resistant alpha keyboard for applications in which alpha data is required.

Optional printer enclosure with locking latch for added security.

Optional shroud provides additional protection and sun shield for the terminal.



Large numeric keys are easy to see and use, making weighments fast and easy to process.

Terminal enclosure latch can be locked for added security.

Optional intercom speaker allows driver to communicate with office when the need arises.

Optional proximity card reader, bar code card reader or magnetic card reader speeds up the process of vehicle identification. Simply swipe or present the card to begin the weighing transaction. Long range RFID readers also available.

Ticket dispenser

**REDUCE OPERATING COSTS WITH
THE FB2560 DRIVER ASSIST TERMINAL**



NTEP and MC approved
for use in commercial
weighing applications



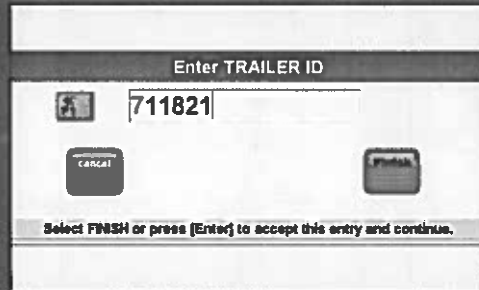
FB2560 DAT WEIGHING PROCESS

1. Inbound-Outbound Screen



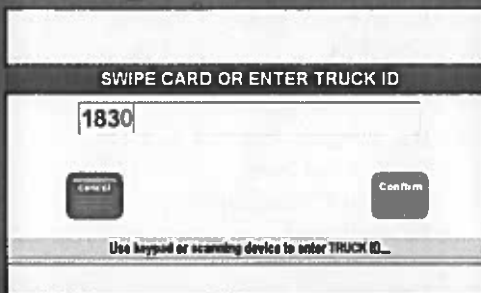
Truck pulls onto the scale platform and the process begins when the driver selects inbound or outbound weighing. In many applications, this screen can be bypassed so the process begins with the ID Entry Screen below.

5. Optional Variable ID Prompt



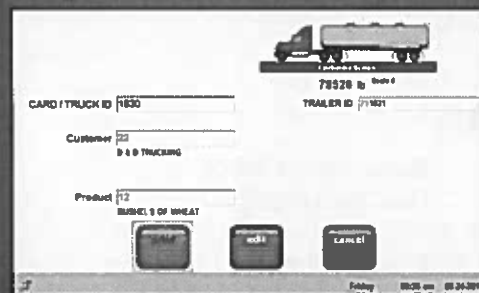
Customer specified information field. This information is stored in the transaction record, but not validated against the system database. Ten programmable fields are available.

2. ID Entry Screen



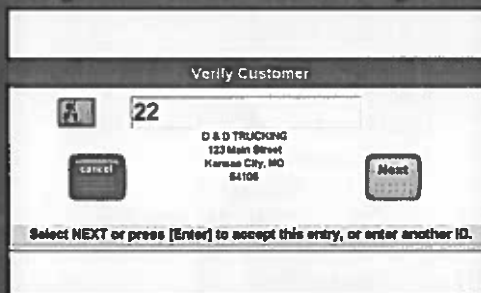
Driver is prompted to enter the Truck ID or swipe an ID card. FB2560 DAT reader accessories include a proximity, magnetic or bar code card reader.

6. Optional Review Screen



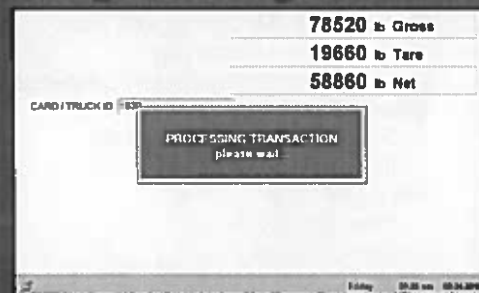
Provides the driver an opportunity to review the entered information before generating a ticket. If changes are needed, the driver can select the EDIT button to update the information.

3. Optional Customer ID Prompt



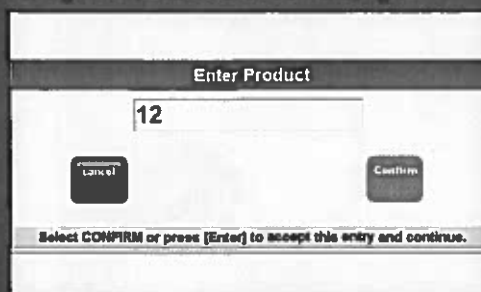
Optional prompt for Customer ID. Customer ID is validated against the system database.

7. Weight Processing Screen



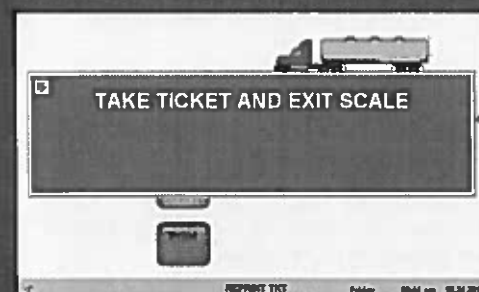
Screen will show Gross, Tare and Net weights briefly, while the transaction is processing. Printing a ticket is optional.

4. Optional Product ID Prompt



Optional prompt for Product ID. Product ID is validated against the system database.

8. Process Conclusion Screen



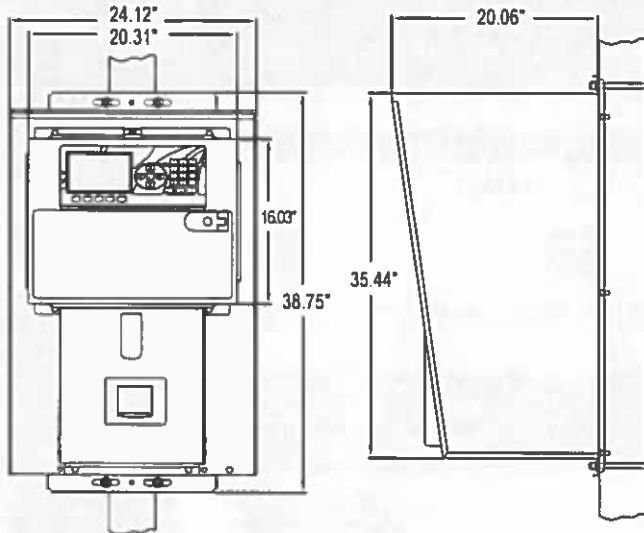
Field programmable message that concludes the transaction. In this example, the message instructs the driver to take the ticket and exit the scale. Alternate messages are available for inbound and outbound transactions.

FB2560 SERIES DAT DRIVER ASSIST TERMINAL

Weighing Solutions for the World Since 1830

Fairbanks.com

DIMENSIONS



SPECIFICATIONS

Enclosure Stainless steel NEMA 4X
 Processor Quad Core 1.83 GHz
 Memory 4 GB
 Onboard storage 8 GB Mini PCIe
 Display 6.0" x 3.5", 7.0" diagonal, 800 x 480 resolution,
 TFT LCD with LED backlight,
 Full color graphic with active matrix
 Touch screen Standard
 Keypad Oversized keys: 0-9, Decimal point, Enter,
 5 Function keys, 8 Control keys
 Outputs (internal) One (1) RJ45 10/100/1000 Base-T Ethernet port
 Three (3) RS232C ports:
 One (1) RS232C/RS485 selectable
 Two (2) dedicated RS232C
 Five (5) USB ports:
 Three (3) USB 2.0
 One (1) USB 3.0
 One (1) USB for remote QWERTY keyboard
 One (1) dedicated optically isolated 20mA
 Power requirements 100 to 240 VAC @ 47-63 Hz
 Clock Real time clock, Day of the week,
 12-hour am/pm, Date (month/day/year)

Displayed characters . . . ¼" tall
 Display resolution 10,000 divisions commercial,
 50,000 divisions for non-commercial
 Capacity Programmable to 999,999
 Displayed units 7 primary and 7 secondary
 Calibration &
 configuration Parameters can be configured locally at the
 instrument or remotely by means of an ethernet
 connection and standard browser
 Programmable fields . . . 10
 Product files 250,000
 Customer files 250,000
 Stored tares 500,000
 Transaction records . . . 1,000,000 (10,000 with two images)
 Reports Seven (7) onboard configurable reports
 Networking Network and share data between (up to five)
 model FB2560 DATs
 Humidity 0 to 99%
 Accuracy Class III/IIIL
 Accessories Integrated intercom speaker

Bar code card reader
 Magnetic card reader
 Proximity card reader
 Metalized alpha keyboard
 Remote displays
 IP network camera
 Traffic lights
 Traffic light control box
 Traffic light control card
 Tape printer
 Long-range RFID reader
 4-20 mA (Passive, 16 bit)
 4-20 mA (Active, 16 bit)
 Serial expansion card with four additional
 outputs per card:
 One (1) RS232C
 One (1) RS232C/485 selectable
 One (1) RS232/20mA selectable
 One (1) RS485,
 PLC interfaces:
 PROFIBUS-DP, Modbus-RTU, Modbus-TCP,
 DeviceNet, ControlNet, Ethernet/IP
 Approvals NTEP CC# 10-089; MC# AM-5805, ETL

Your Fairbanks Scales Authorized Representative is:

Call toll-free for the representative nearest you:
(800) 451-4107
 Call between 8:00 a.m. – 5:00 p.m. Central Time
 Corporate Offices: 821 Locust • Kansas City, MO 64106 • (816) 471-0231
 Internet Address: <http://www.Fairbanks.com>



4300 N. Bell School Rd
Loves Park, IL 61111
815/885-4448
Fax:
815/885-4127
Toll Free:
888/934-4448
E-mail:
www.creamcityscale.com



The scale people since 1921

ISO / IEC 17025 CERTIFIED

Branch Office:
490 Enterprise Drive
Lake Mills, WI 53551
920/648-4448

KIOSK REPLACEMENT (GREEN LAKE)

Green Lake, WI

Requested by: Bob Shaffer

Software Package:

- ScaleMaster Pro software and hardware
Base Software/Hardware package.....\$ 5,500.00
(1) Setup for Touch Screen application.....\$ 500.00

Equipment Package: Touch Screen Package

- (1) Rice Lake 680 indicator
- (1) Netgear 8 port switch
- (1) 24 x24x20 Hoffman enclosure
- (1) 24 x 24 Hoffman back panels
- (2) Hoffman locking handles
- (1) Hoffman kiosk heater, need for direct thermal printers
- (1) APC battery back ups
- (1) Datamax ethernet direct thermal printer
- (4) Rolls of Direct Thermal printer tickets
- (1) Superlogic outdoor rated touch screens with embedded PC
- Ethernet and serial communication wire

Please note:

- Any PC on the same network will be able to access the Scale Master Web page
- Remote support will be provided on a time/material basis as needed if site has Internet access
- If there is an existing network, customer will need to supply a block of IP addresses for the new equipment
- All conduit and wire pulls to be done by electrician, not CCS.
- A site drawing will be provided, if necessary, to lay out the wire runs
- Training to be done on day of installation
- Scale Master is a onetime charge. No annual fees unless customer needs VPN access or off-site data back up to CCS servers. Will quote if interested.
- Remote scale reliant on customers internet connection

(1) Trip, (2) technician, (16) hours onsite time/training support

Total Estimated Project Cost.....\$ 16,991.00

4300 N. Bell School Rd
Loves Park, IL 61111
815/885-4448
Fax:
815/885-4127
Toll Free:
888/934-4448
E-mail:
www.creamcityscale.com



The scale people since 1921

ISO / IEC 17025 CERTIFIED

Branch Office:
490 Enterprise Drive
Lake Mills, WI 53551
920/648-4448

KIOSK REPLACEMENT (MARKESAN)

Markesan, WI

Requested by: Bob Shaffer

Software Package:

- ScaleMaster Pro software and hardware
 - (2) Setup for Touch Screen application.....\$ 500.00
 - (1) Additional Scale Master Remote Location Seat.....\$ 999.00

Equipment Package: TouchScreen Package

- (1) Rice Lake 680 Indicator
- (1) Netgear 8 port switch
- (1) 24 x24x20 Hoffman enclosure
- (1) 24 x 24 Hoffman back panels
- (2) Hoffman locking handles
- (1) Hoffman kiosk heater, need for direct thermal printers
- (1) APC battery back ups
- (1) Datamax ethernet direct thermal printer
- (4) Rolls of Direct Thermal printer tickets
- (1) Superlogic outdoor rated touch screens with embedded PC
- Ethernet and serial communication wire

Please note:

- Any PC on the same network will be able to access the Scale Master Web page
- Remote support will be provided on a time/material basis as needed if site has Internet access
- If there is an existing network, customer will need to supply a block of IP addresses for the new equipment
- All conduit and wire pulls to be done by electrician, not CCS.
- A site drawing will be provided, if necessary, to lay out the wire runs
- Training to be done on day of installation
- Scale Master is a onetime charge. No annual fees unless customer needs VPN access or off-site data back up to CCS servers. Will quote if interested.
- Remote scale reliant on customers internet connection

4300 N. Bell School Rd
Loves Park, IL 61111
815/885-4448
Fax:
815/885-4127
Toll Free:
888/934-4448
E-mail:
www.creamcityscale.com



The scale people since 1921

Branch Office:
490 Enterprise Drive
Lake Mills, WI 53551
920/648-4448

ISO / IEC 17025 CERTIFIED

Equipment Package: Software, Hardware, Labor
Program/labor hours are an estimate only, additional hours are billable if necessary.

(1) Trip, (2) technician, (16) hours onsite time/training support

Estimated Project Cost.....\$ 11,990.00

PROJECT TOTAL FOR BOTH KIOSK REPLACEMENTS.....(BUDGETARY).....\$ 28,981.00

Signing below indicates approval of the above listed Scope of Work.

Customer Signature
Proposal # 2021126-A

Cream City Stateline Scale
Josh Cordell 11-16-2020

This quotation is valid for 30 days.
Terms of this contract are: 50% due on acceptance, balance due on completion.
A signed Scope of Work/Sequence of Operation must be on file before programming begins.
Freight charges and taxes, if applicable will be added to the invoice.

**Customer Signature on quotation guarantees full payment of the project as quoted. If payment in full is not reached within 30 days, finance charges will be added to past due accounts. The monthly rate is 1.5%, APR of 18%.*

November 21, 2020

Josh Nitzke
Green Lake County Highway Department
P.O. Box 159
Green Lake, WI 54941
Phone: (920) 229-5117
E-mail: jnitzke@co.green-lake.wi.us

AWS Quotation

Quotation # DS 11-21-20 Green Lake County Highway Department

Please take a moment to carefully look over the following project information. If there are any changes, questions or additions, please let me know and I will amend this quotation to fit those needs.

General Information/Project Overview:

- The Green Lake County Highway Department is looking to upgrade their current data collection system at their two scales. They are looking to capture truck weights, empty and loaded, for materials inventory valuation.
- AWS is proposing a K-2 kiosk-based system with options for a SmartPass4 RFID reader and RF Remotes to allow for drivers to remain in their trucks.
- Keeping drivers in their trucks will reduce liability for the county and increase efficiency of the system by limiting the time that trucks are on the scale
- The Interact software will maintain the database tables on a computer in the office and communicate real time with the K-2 kiosk via a network connection.
- Staff will be able to edit and reprint tickets as well as generate and print tonnage reports.

Subcontractors

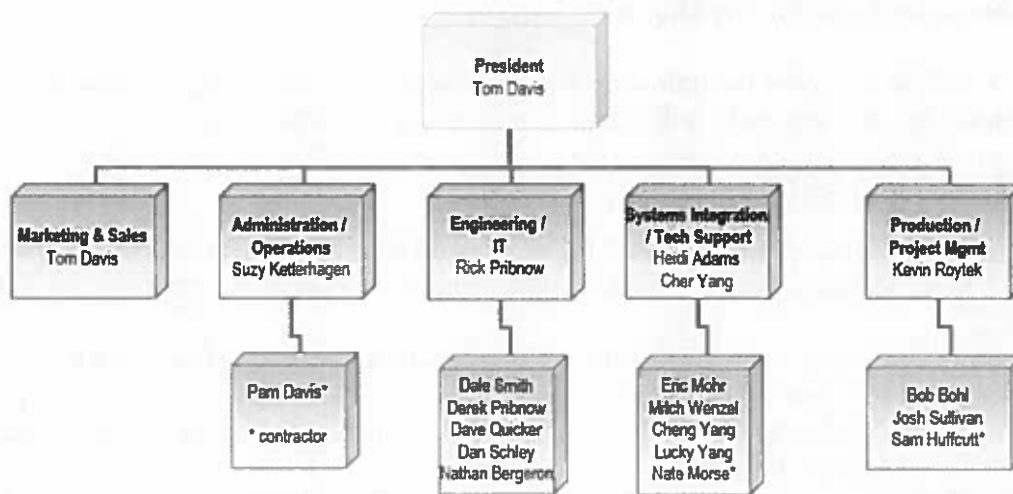
Scale Company:

AWS is not a truck scale provider. AWS can and has worked with dozens of scale providers in the past. The scale company to provide and calibrate scale indicator.

Electrical Contractor:

AWS is not licensed to provide electrical services. Therefore, AWS will not provide any electrical subcontractor for this project. We assume Green Lake County will supply these services to satisfy local code and coordinates.

AWS Organization Chart



Responsibilities and Qualifications

AWS Qualifications:

- 0) Dan Schley – Systems and Sales Engineer – 6 years – will be the main contact for project management and coordination of all activities between AWS staff and Green Lake County personnel.
- 1) Heidi Adams – System Integration and Support Engineer – 22 years – has been working with highway personnel since she started in 1997 and will be responsible for any high-level technical support.
- 2) Rick Pribnow – Engineering and Software Development Manger – 19 years - manages engineering and product development department and will provide any engineering support required.
- 3) Kevin Roytek – Production Manager – 15 years – manages the production group and hardware portion of project management and will assign installation team and provide necessary documentation.

Responsibilities of AWS:

- 1) Design and build system to meet the specifications/details outlined in this proposal.
- 2) Upon receiving an order, provide the customer with drawings showing all necessary communication runs as described above.
- 3) Register Interact and DataSync software and provide installation via download via our FTP site.
- 4) Provide all on-site services (other than services noted below) for AWS hardware and software
- 5) Mount all AWS hardware and terminate Ethernet connection
 - a) AWS will provide the necessary drawings and dimensions.
- 6) Provide K-2 hardware as documented above.
- 7) Provide support as documented above for installation, setup and training during normal AWS hours (7:30 am to 5:00 pm CT).

Responsibilities of Green Lake County Highway Dept:

- 1) Provide the name of the lead person that will be taking ownership of this project once the bid is signed. AWS will be requesting needed information from this person along with verification of the completion of these “Responsibilities of Customer” before the installation date.
- 2) Provide requested database information in the form of a CSV file (customer list, truck list, material list, etc.) prior to installation.
- 3) Provide PC(s) that meets AWS requirements (to be provided upon order/request).
- 4) Assign one static IP address for each K-2 kiosk.
- 5) Supply and terminate clean (requires 120 VAC), dedicated power and surge protection to K-2 kiosks and computers. Also provide any necessary communication cable/conduit that meets local state codes from the K-2 to network as outlined in this quotation.
- 6) Provide network infrastructure and IT support during installation.
- 7) Have dedicated personnel available for training purposes when system is installed.
- 8) Confirm that the above items are completed before AWS provides onsite installation.

Responsibilities of Scale Company:

- 0) Configure scale indicators to provide a continuous RS-232 serial output in a standard Condec format and provide scale interface cable.
- 1) Calibrate truck scales at each site.

Relevant Experience

References:

Marathon County Highway Department

- Scale Automation
- 5 sites - AWS K-2 kiosk hardware with RFID and remote controls and Interact software
- \$99,996.75
- Jim Greisbach - James.Griesbach@co.marathon.wi.us
- Russ Graveen - Russell.Graveen@co.marathon.wi.us
- 1430 West Street, Wausau, WI 54401
- 262-886-8446

Waupaca County Highway Department – Interact with RFID

- Scale Automation – originally installed in 2002, upgraded in 2019
- 4 sites - AWS K-2 kiosk hardware (no RFID equipment) at four sites and Interact software
- \$45,970.00 in 2002;
- \$42,080.00 Upgrade plus installation (estimate \$50,000.00) in 2019
- Mark Korth - mark.korth@co.waupaca.wi.us
- 515 E Fulton Street, Waupaca, WI 54981
- 715-258-7050

Door County Highway Department – Interact with RFID

- Scale Automation – installed in 2004, upgraded in 2017
- 1 site - AWS K-2 kiosk hardware with RFID, remote controls, remote displays and Interact
- \$24,900.00 in 2004; \$17,933.00 plus installation in 2017
- Duane Kuntz - dkuntz@co.door.wi.us
- 1001 South Duluth Ave., Sturgeon Bay, WI 54235
- 920-746-2469

Other Wisconsin County Highway Departments Installations:

Adams County – 2 sites with K-2 kiosks and Interact software
Barron County – 1 site with legacy (15+ yr old) kiosk and Interact software
Chippewa County – 2 sites (one portable) with K-2 kiosks and Interact software
Forest County – 1 site with K-2 kiosk and Interact software
Iron County – 1 site with K-2 kiosk and Interact software
La Crosse County – 1 site with K-2 kiosk, RFID, remote controls and Interact software
Lincoln County – 2 sites with legacy kiosks and Interact software
Monroe County – 1 site with legacy kiosk and Interact software
Polk County – 2 sites with K-2 kiosks and Interact software
Portage County – 1 site with K-2 kiosk, RFID and Interact software
Racine County – 2 sites with K-2 kiosk, RFID, remote controls, and Interact software
Walworth County – 1 site with K-2 kiosk, RFID and Interact software
Washington County – 2 sites with K-2 kiosks and Interact software
Wood County – 1 site with legacy kiosk and Interact software

Customer Initials: _____

Cycle of Operation:

For Unattended Stored Tare Weight Transactions (County Trucks)

- 1) Scale is at zero
- 2) Truck pulls onto scale (weight goes above Threshold)
- 3) Driver is prompted to enter or scan Truck ID
 - a) SmartPass4 automatically reads RFID tag for truck
or
 - b) If RFID tag fails for any reason, the driver can use their remote control to enter a Truck ID
or
 - c) Driver exits truck, walks to kiosk and enters Truck ID via touch keypad
- 4) Driver is prompted to enter a numeric Material code
 - a) Driver uses remote control to enter Material code
- 5) Optionally, a driver can be prompted to enter numeric Activity code
 - a) Driver uses remote control to enter an Activity code
- 6) A summary is displayed showing transactional information
Note 1: If all information does not fit on the two lines available, the display will scroll
Note 2: See voluntary alternate items for upgrading to a four-line display that will not scroll
 - a) Driver presses Enter to confirm selections
- 7) K-2 stores the gross weight
 - a) Display shows Ticket Number and a message to "Drive ahead"
- 8) Truck exits scale

For Weigh In/Out Transactions (Municipal Trucks)

- 1) Scale is at zero
- 2) Truck pulls onto scale (weight goes above Threshold)
- 3) Driver is prompted to enter or scan Truck ID
 - a) SmartPass4 automatically reads RFID tag for truck
or
 - b) If RFID tag fails for any reason, the driver can use their remote control to enter a Truck ID
or
 - c) Driver exits truck, walks to kiosk and enters Truck ID via keypad
- 4) Driver is prompted to enter numeric Material code
- 5) A summary is displayed showing transactional information
- 6) Driver presses Enter to confirm selections
- 7) K-2 stores the gross weight
 - a) Display shows Ticket Number and a message to "Drive ahead"
- 8) Truck exits scale

Equipment and Services:

Hardware:

(2) (5000-00006) K-2 Kiosk

- Manufactured/assembled by AWS
- 24" x 20" x 12" Powder-coated steel, weather resistant enclosure
- K-2 controller: QVGA colored LCD display with numeric keypad
- 400W Thermostatically controlled heater
- Relay controller and cable harness
- Green LED exit light
- Remote control receiver

Software:

(1) (3000-00018) Interact® SE single-user software site license Rev. 6 (Shop/Office PC)

- Ability to store, print, edit and re-print tickets
- Interact SE provides a suite of standard reports which include "Tonnage and Charges" reports. Any reporting requirements beyond these standard reports may be subject to additional billing.
- Multiple price tables
- Four configurable tables (e.g. location, origin/destination)
- Ability to track "Jobs"
- Transaction importing/exporting
- Third party interfaces available (e.g. QuickBooks, Sage 100 & 300, Great Plains/Dynamics, MAS 90, Master Builder, Maxwell Systems-Street Smarts, Timberline, JWS, etc.)

(1) (3000-00071) DataSync Hosted

- This module provides synchronization of data from the remote location(s) to the central office – eliminating the need to double enter data between Interact sites. This requires a high-speed Internet connection to function optimally.
- DataSync Hosted minimizes the cybersecurity vulnerabilities such as public static IP addresses and firewall exceptions. It also minimizes the need for IT interaction by removing the need for router configuration, port forwarding, firewall exceptions and detailed network knowledge.
- After first year, recurring charge of \$1,290.00 annually.
 - (1) Server at \$550.00 per server annually
 - (2) Client at \$370.00 per client annually

Professional Services:

(1) (4100-00027) Eight (8) Hours of Project Management

- Consulting and engineering services include: Project pre-planning, conceptual design, schematic design, design development, and problem solving
- Project management services include:
 - Set project goals and timelines with client
 - Conduct kickoff meeting
 - Conduct weekly/bi-weekly meetings
 - Monitor progress, results and obstacles
 - Supervise product delivery/execution
- Client will provide a project contact that will work with AWS to coordinate project management activities. Ensure the business area(s) that will benefit from the project is represented and empowered. Ensure resources are available and will actively participate in project activities.

(1) (4100-00003) Sixteen (16) Hours of Installation and Application Management

- Remote services for setup of the database, design the scale ticket, pre-installation configuration, and training

Support:

(1) (4000-00006) Recurring Annual Support Plan (ASP)

- After the software is registered and configured, support is only available through a support plan.
- Priority service - Unlimited phone and e-mail support during normal business hours for one calendar year.
- Extended hours from 7:00 am to 6:00 pm Central Time, Monday through Friday
- Support of peripheral devices (scanners, kiosks, printers, etc.) purchased from AWS.
- Free maintenance storage program. To participate, please send AWS your backups and we will keep a copy of the most current database at our facility for emergency purposes. Send the backup file either by U.S. mail or by emailing it to aws.admin@awsys.com.
- Free Interact updates within the same release version (i.e. from revision 6.2 to revision 6.3), as needed. To check for Interact updates, please contact our technical support team.
- Discounted price on Interact "version upgrades" (i.e. from version 5 to version 6).
 - Database conversion charges apply at a discounted rate and on-site service if needed
- 20% discount on the following services:
 - On-site training, support, and services
 - Engineering services for software enhancements and report modifications
 - AWS in-house repair of equipment (excludes repairs by manufacturer)
- Telemetry Modem updates including
 - upgrade security patches per manufacturer's specification as they become available
 - stay current on latest firmware updates
 - change and manage passwords as recommended per manufacturer
 - limit incoming data to required ports

Products and Services:

Item	Description	Suggested List Price Ea.	QTY	Total List Price
Hardware				
(5000-00006)	K-2 Kiosk	\$ 7,890.00	2.0	\$ 15,780.00
				Subtotal: \$ 15,780.00
Software				
(3000-00018)	Interact SE license Rev. 6	\$ 3,100.00	1.0	\$ 3,100.00
(3000-00071)	DataSync Hosted	\$ 750.00	1.0	\$ 750.00
				Subtotal: \$ 3,850.00
Professional Services and Support				
(4100-00027)	Project Management	\$ 175.00	8.0	\$ 1,400.00
(4100-00003)	Application Management / Installation	\$ 140.00	16.0	\$ 2,240.00
(4000-00006)	Recurring Annual Support Plan	\$ 1,495.00	1.0	\$ 1,495.00
				Subtotal: \$ 5,135.00
				Base Total: \$ 24,765.00
Options				
(4000-00003)	On-Site Install	\$ 3,500.00	0.0	\$ -
(0910-00039)	RFID Reader Kit	\$ 4,500.00	0.0	\$ -
(0910-00067)	RFID eGo Plus Mini Windshield Tag	\$ 18.00	0.0	\$ -
(CV-19)	Remote Controller (QTY 50+)	\$ 40.00	0.0	\$ -
(SBLM-2-2X16)	Matko Remote Display	\$ 3,190.00	0.0	\$ -
(17mm-16x96)	Alpha-Eclipse Street Smart - 2 Lines	\$ 5,830.00	0.0	\$ -
(3000-00019)	Interact SE network license	\$ 1,550.00	0.0	\$ -
(3000-00032)	Third Party Interface to Chems	\$ 2,500.00	0.0	\$ -
				Options Subtotal: \$ -
				Grand Total: \$ 24,765.00

Note: Changes to the Cycle of Operation/Project Overview may be subject to additional charges. We reserve the right to make any modifications/changes necessary to meet these needs if they should arise. No changes will be made without an official change order authorized by your company.

Support Options:

(1) (4100-00022) On-site Installation – plus travel and living expenses

- Travel time from Chippewa Falls to scale site.
- AWS to provide two (2) engineers for up to two (2) ten-hour day for setup, installation and training during normal AWS hours (7:30 am to 5:00 pm CT).
- Travel time from site to Chippewa Falls.
- Additional charges include airfare, hotel and per diem

(2) (0910-00039) Transcore SmartPass E4 RFID Reader Kit

- Allows for truck to be identified without swiping a card or entering an I.D.
- Simplifies transaction, keeps driver in truck, and speeds up transaction process.
- RS 232 communication
- Reads eGo and ATA protocols
- Includes:
 - (1) (0910-00043) Reader with internal antenna
 - (1) (0030-00020) RFID Transformer
 - (1) (0600-00031) 5' communication cable included

(30) (0910-00067) RFID eGo Plus Mini Windshield Tag

- Thin, flexible sticker tag, half-frame
- To be mounted in the window of all County vehicles using the scale

(25) (SC-33B) Remote Control

- Provided the ability to have a fleet of drivers stay in their trucks while answering prompts.

(1) (17mm-16x96) Alpha Eclipse Street Smart

- Two lines of sixteen (16) 4" super bright alpha numeric characters
- Mounted so that drivers can use the remote control to enter prompt values
- Sealed enclosure and fanless design eliminates filter maintenance
- 125° Viewability

(1) (SBLM-2-2X16) Matko Remote Display

- Two lines of sixteen (16) 2" super bright alpha numeric characters each
- To be mounted so that drivers can use the remote control to enter prompt values.

(1) (3000-00019) Interact® SE Network license

- A second license is useful when truck scale traffic volume is so high that unattended operation is not to be disturbed. This license can be installed on an office computer for database maintenance purposes.
- Price is based upon additional copy of Interact being purchased and installed at same time as initial system on a LAN-based system.

(1) (3000-00032) Third Party Interface to Chems

- Assuming a flat ASCII file can be imported into Chems.
- Third party interfaces are based on a time and materials basis. Upon initial discussion of the interface requirements, the customer will be notified of any potential additional charges.

IF network connectivity cannot be provided by the County choose one of:

(1) (0020-00072) Telemetry Modem with Antenna – Please add: \$995.00

- 4G Modem with omni-directional MiMo antenna
- Provides an internet connection over a cellular connection. The K-2 will communicate with the host computer via a cellular connection.
 - Telemetry modems are dependent upon good signal strength. If good signal strength is not achievable with standard antenna, directional antennas are available at an additional cost.
- To be added to customer's current cellular data plan. Typical data plan rates from your cell provider are \$25.00 per month for a 1GB data plan. Cellular providers may apply additional setup and installation charges/fees.
- With this option you will need to set up a Telemetry Plan (Machine to Machine data plan) with a cell provider, Verizon MAA (Master Account Agreement) or AT&T (Foundation Account). The cell provider will need the ESN number assigned to the modem equipment to activate the device in their system and assign an IP number. AWS will setup the modem, configure, and test.

(1) (4100-00004) Telemetry Modem Rental

- Short Term: Please add \$125.00/month
 - For rental agreements lasting one (1) year or less
- Long Term: Please add \$75.00/month
 - For rental agreements lasting longer than one (1) year
- Monthly charge starts on date of installation
- 4G Modem with omni-directional MiMo antenna
- Provides an internet connection over a cellular connection. The K-2 will communicate with the host computer via a cellular connection
 - Telemetry modems are dependent upon good signal strength

Delivery:

Shipment of above equipment and services can be made within six (6) weeks after receipt of your written purchase order or signed copy of this quotation.

Prices:

All price quotes are valid for thirty (30) days from the quotation date. All prices are quoted in US dollars. Please note that prices do not include travel and living expenses (if on-site installation is quoted - as per Responsibilities of Customer) taxes or shipping costs.

Payment Terms:

Please do not pay from this quotation. An invoice will be generated and mailed or faxed to you once we receive the signed quotation/purchase order.

- Invoice one: 50% of the quoted cost is due upon placement of order.
- Invoice two: The remaining 50% of the quoted cost, plus travel and living expenses will be billed upon shipment of equipment. Second payment is due net 30 days from invoice date.
- Invoice three: If on-site services are required, 100% of on-site installation costs plus travel and living expenses will be billed upon completion of on-site services. Third payment is due net 30 days from invoice date.
- Add for shipping and handling expenses.

Please note that prices do not include taxes costs.

Note: There will be a 1.5% service charge for balances over 30 days old.
A 2.5% convenience fee will be charged for payments made using a credit card.

Customer must return the software to AWS within (60) days from date of purchase agreement in order to receive a refund of the software license(s) fee from AWS. NO REFUNDS will be issued after 60 days. Under no conditions does termination of the software license entitle you to a refund, in whole or part, of any amount you paid for labor and support charges.

Security Interest:

Until the purchase price is paid in full, AWS retains a security interest in the equipment as provided in Chapter 402, Wis. Stats.

Should any further questions arise, please do not hesitate to contact me at 715-726-0691. Thank you once again for the opportunity to quote on this project.

Sincerely,

Dan Schley
Systems and Sales Engineer
AWS
dan.s@awsys.com
www.awsys.com

Please initial "each page" and any "options" you wish to purchase, then sign and email or fax (715-726-1003) the entire copy of this quotation.

Accepted by: _____ Date: _____
(Signature)

Print name: _____

Purchase Order #:	_____
--------------------------	-------

Bill-To Address:

Contact Person for Billing Questions:	_____
Contact Person's Phone Number:	_____
Contact Person's Fax Number:	_____
Contact Person's E-mail Address:	_____

Ship-To Address (If different from Billing):

Ship-To Method (UPS Ground/2 day/etc.):	_____
--	-------

Quotation #: DS 11-21-20 Green Lake County Highway Department

Computer/OS Specification for Interact®

Listed below are the minimum hardware specifications required for **Interact** to operate. If you are purchasing a new system, consult your PC vendor to make sure it will meet these specifications. Your PC vendor or your company's IT personnel will be able to help you determine any additional PC hardware you will require to have a completely functional system.

Interact is a client only application. It does not require a centralized server component. The central point of access for the client(s) is a Microsoft SQL Server 2012 database (the Interact installation routine will install an MS SQL Server Express 2012 database if necessary). If using **Interact** in a multiple client environment, performance becomes dependent on the network configuration. This consists of computers, cabling, hubs/switches, and any other network components in your environment. A qualified network engineer should be consulted to make sure your network is designed, configured and installed properly.

Hardware

All Workstations: Running Interact

- Intel®/AMD® Processor – 1 GHz or greater
- 4 GB or greater of RAM
- 200 GB available storage space (data dependent)
- 20" or greater (touchscreen monitor if running AutoTouch module)
- Network Interface Card
- Optional - uninterrupted power supply (battery backup)
- Optional - removable storage device for data backup (USB flash drive, External hard drive, etc.)

Additionally: Workstations connected to a Scale or Printer

- 1 Serial Port for each scale indicator (up to two)
- 1 laser or impact printer port – typically USB or Ethernet port

Operating Systems

Workstation: Running Interact

Microsoft® Windows:

- Windows 7® Service Pack 1 or later, Windows 8.1®, Windows 10®

File Server: Hosting the Database

Any OS that can be accessed using one of the above Workstation Operating Systems:

- Windows® Server 2008 R2, 2012 Server R2, Server 2016 (Full Installation)

Approvals

- NTEP CC 03-101
- CTEP 5663-11

Interact Version: 6.2 or later

AWS Statement of Terms and Conditions

This document defines the terms and conditions between
AWS and its customers, effective 1/16/2019

1. **USE:** Notwithstanding any terms to the contrary, agreed upon in writing by AWS and its customer, each customer order shall be deemed to be under the Terms and Conditions as described herein.
2. **DELIVERY:** Delivery schedules will be quoted on a case-by-case basis, please refer to the Delivery section on the quote. Lead-time will begin when the signed quote, purchase order and down payment is received and approved at AWS's home office. AWS will use its best efforts to accomplish delivery by the indicated delivery date. However, AWS will not be liable for any expenses or damages incurred as a result of actual delivery after such delivery date.
3. **SHIPPING:** Customer agrees to pay the appropriate freight charges for all shipments from AWS's office. Customer assumes risk of loss of, or damage to, the shipment from the time of delivery to a carrier at AWS's point of shipment.
4. **ACCEPTANCE:** The acknowledgement of Customer's purchase order shall constitute AWS's agreement on the prices specified therein, and Customer's agreement to accept delivery of product.
5. **ANNUAL SUPPORT PLAN (ASP):** Activates thirty days after the first software license is registered.
6. **PRICE:** All price quotes are valid for thirty days from the quotation date. The prices quoted do not include travel and living expenses, shipping costs, any federal, state or local excise, sales, property, use or similar taxes, all of which shall be paid by the Customer, if applicable. AWS has nexus in WI, ND, SD. All other states require customer to pay sales/use tax. All prices are quoted in USD.
7. **PAYMENT:** Terms of payment are included on the quote; please refer to the Payment Terms section. If not specified, payment is due thirty days net from date of invoice. Terms of payment for destinations outside the United States and Canada are net cash by irrevocable letter of credit or by payment with, or in advance of, order.
8. **DELINQUENCIES:** AWS reserves the right to delay or suspend service if Customer's account is delinquent or past due. This applies to both phone support and on-site service calls.
9. **CUSTOMER RESPONSIBILITIES:** To assure a smooth installation, the Customer shall provide the requirements as stated on the System Requirements and Responsibilities, Computer Specifications, and the Scope of Work or Cycle of Operations included in the quote.
10. **SERVICE OF PRODUCT:** All AWS products are to be serviced at AWS's manufacturing facility, unless written agreements specify otherwise. All products to be serviced must be freight pre-paid, both in-warranty and out-of-warranty. Reshipment from AWS will be via UPS ground, unless specific instructions are given otherwise. In-warranty return shipping charges shall be paid by AWS. Out-of-warranty return shipping charges shall be paid by the Customer. Premium delivery surcharges shall be borne by the Customer. A return material authorization (RMA) number must appear on all product returned to AWS. If on-site service is required, please see item 11. Billable Service Calls.
11. **WARRANTY:** For a period of one (1) year after the date of installation, AWS warrants the product to be free from defects in material and workmanship. Expressly excluded from AWS's obligations are any damages to or failure of the System caused by other than latent defects in the design or manufacture of the equipment compromising the System, and reasonable wear-and-tear resulting from normal use. Conditions not covered by this warranty include, but are not limited to, misuse, negligence, accident, theft or unexplained loss, abuse, abnormal temperature or other environmental extremes, unsuitable electrical conditions, fire, flood, lightning, wind, acts of God or public enemy, or improper wiring, installation, repair or alteration by anyone other than AWS. Failure of the Customer to use the System according to the instructions provided by AWS shall void the warranty provided herein.
12. **BILLABLE SERVICE CALLS:** All on-site service calls by an AWS technician will be billable to Customer. Service call rates are available upon request. Charges will include, but are not limited to, labor, materials, travel and living expenses.
13. **LIMITATION/DISCLAIMER OF LIABILITY:** AWS shall not be liable for any indirect, incidental, special or consequential damages, loss or expense (including, but not limited to loss of use, revenue, or profit), directly or indirectly arising from Customer's use of, or inability to use, the System either separately or in combination with other systems, or for personal injury or loss or destruction of other property, or from any other cause. Customer hereby assumes and will bear the entire risk of direct and consequential loss or damage to the System or any part thereof from the time of delivery to a carrier at AWS's point of shipment. Customer shall indemnify AWS against and hold AWS harmless from any and all claims, actions, suits, proceeds, costs, expenses, damages and liabilities, including attorney's fees claimed by any person, organization, association, or otherwise arising out of, or relating to the System, use, possession, operation and/or condition, thereof, arising out of any event on or after the date of delivery of the System to the installation location.
14. **ADDITIONAL INSTALLATION AND CONSTRUCTION CHANGES:** AWS has estimated the cost of the system and the cost of installation of the system based upon a reasonable review of the installation location. However, should the installation of the system require additional material, labor or construction, either: a) not originally estimated because of hidden or unknown conditions, or b) which Customer may request or desire, or that may be necessary to accommodate the system or move or change any existing equipment, Customer agrees to pay all the additional charges associated with required material and work. Additional labor will be charged if site callbacks are necessary due to delays caused by other equipment providers. AWS will make reasonable efforts to notify Customer if additional installation or related charges will be incurred, however, because the information may not be known by AWS until the actual installation is underway, lack of notification of Customer by AWS shall not alter Customer's obligation and agreement to pay all such additional charges. Additionally, Customer hereby agrees to pay any additional installation or related charges incurred by AWS which are related to any delay or stoppage of work caused by the customer.
15. **CUSTOMER'S RIGHT TO CANCEL, CHANGE ORDER, REFUND:** Customer shall have the right to terminate a purchase agreement unilaterally for a period of three (3) days after AWS's acceptance of an order. Thereafter, Customer may cancel its order, reduce quantities, revise specifications or extend schedules only by written agreement with AWS. Customer may be liable for reasonable cancellation charges including, but not limited to, restocking fees, freight charges, employee labor charges and any materials or equipment special ordered for Customer which cannot be returned already incurred and commitments made by Seller. Customer must return the software to AWS within (60) days from date of purchase agreement in order to receive a refund of the software license(s) fee from AWS. NO REFUNDS will be issued after 60 days. Under no conditions does termination of the software license entitle you to a refund, in whole or part, of any amount you paid for labor and support charges.
16. **LEASE AGREEMENT:** The leasing customer (Lessee) agreement is with the leasing company the Lessee selected, not with AWS. AWS is not responsible for the Lessor's acts. Customer agrees the Lessor is not an agent of AWS, nor is AWS an agent of the Lessor. AWS reserves the right to delay or suspend service if Customer's account with the Lessor is delinquent or past due; this applies to both phone support and on-site service calls.
17. **TELEMETRY MONITORING SERVICE (TMS):** AWS requires customers with a TMS to have a minimum of 250MB allowance per modem per month. AWS does not have the authority to contact your cellular provider – any data plan changes or communications need to be initiated by the customer. AWS is NOT responsible for any overage charges.

Customer Initials: _____

Pence, Becky

From: Hutchison, Bill
Sent: Wednesday, January 13, 2021 7:50 AM
To: Mashuda, Barry
Cc: Schmit, Cathy; Pence, Becky; Mulder, Dennis
Subject: HWY new scales
Attachments: NewHWYscalesquotes.pdf

Importance: High

Hi Barry,

Yesterday you dropped off bids from vendors for new scales for shop 1 and shop 2 and asked me to tell you if I had any concerns on the IT components they all contain before your HWY committee meeting tonight.

Quickly looking through them, I see there is a significant IT responsibility involved and then additional support workload that IT will be responsible going forward for any of them. Since all these vendor products/systems require running on our IT network, the Internet, and IT PCs/software, and vendor remote access.

The details on the quotes do not go far enough for me to know what all extra cost and time will be required and if these different vendors meet our requirements to interface and run on our networks and systems.

There is more here that needs to be investigated before any purchase approval be sought. At a minimum because these quotes do not have the full IT component costs of this project represented and it is very possible the vendors require something from IT that will not work or be compatible with our systems – hence their product will not work.

When can you schedule a time for each of these vendors to come in a explain their systems to us in detail and give us the opportunity to ask these questions?

And with this being an unplanned IT project for us in 2021, we will have to discuss working this into the schedule of all the existing projects we have underway this year.

Thank you.

Bill Hutchison
IT Director - Green Lake County
571 County Road A
Green Lake, WI 54941
(920) 294-4161

Option 2

Pence, Becky

From: Mashuda, Barry
Sent: Wednesday, January 13, 2021 12:02 PM
To: Pence, Becky
Subject: FW: Scale Terminal Quote #4665-21
Attachments: 4665-21.pdf; FB2560 Kiosk.pdf

From: John Grzybowski <johng@badgerscale.com>
Sent: Wednesday, January 13, 2021 12:00 PM
To: Mashuda, Barry <bmashuda@co.green-lake.wi.us>
Cc: Luke Vanderveren <lukev@badgerscale.com>; Tod Asmus <toda@badgerscale.com>; Tricia Sabel <tricias@badgerscale.com>
Subject: Scale Terminal Quote #4665-21

Hi Barry,

Here is the quote you had requested for a basis Truck Scale Kiosk to weigh trucks in and out and print a ticket.

One Kiosk for Scale, Single direction Traffic.

Please let me know if you have any questions.

Thanks again.

John Grzybowski
General Service Manager



Badger Scale, Inc.
PO Box 629
Fond du Lac, WI 54936-0629
Phone: (920) 921-6111
Fax: (920) 921-7722
johng@badgerscale.com
www.badgerscale.com

From: Mashuda, Barry <bmashuda@co.green-lake.wi.us>
Sent: Wednesday, January 13, 2021 11:29 AM
To: John Grzybowski <johng@badgerscale.com>
Subject: RE: Scale Terminal Quote #4609-20

John,



FOND DU LAC: 920.921.6111 FAX: 920.921.7722 • GREEN BAY: 920.662.2680 FAX: 920.662.2681

Quotation # 4665-21	Proposal to: Green Lake County Highway Dept. 570 South Street Green Lake, WI 54941 Attention: Barry Mashuda Phone: 920-229-5116 Fax:	Badger Scale, Inc. 1182 W. Scott St. Fond Du Lac, WI 54936-0629 920-921-6111 or E-mail: johng@badgerscale.com Fax: 920-921-7722 Web: www.badgerscale.com
----------------------------	---	---

QTY	MODEL	EQUIPMENT	TOTAL
		Equipment for your Green Lake and Markesan Truck Scales	
2EA	37041	Fairbanks FB2560 Driver Assist Terminal. Includes the following: <ul style="list-style-type: none"> • Touch Screen • 31079 Internal Analog Interface • 26422 Heater for Terminal • 26258 Stainless Shroud • 22269 Pole Mount Plate • 34962 4" Thermal Tape Printer • 30023 Heater for Printer • 34964 Thermal Paper 2- Rolls Cost - \$10,398.96 each	\$20,797.92
1EA	INST	Installation to existing Kiosk Poles, Test and Calibration to be Done on a Time and Material Basis. Budgetary Cost - \$4,000.00	Add
		Does not include freight or sales tax.	Add

Equipment/Install Total	\$20,797.92 + Installation & Freight
--------------------------------	---

SPECIAL JOB NOTES	Note: Customer to provide Electrician to disconnect conduit and power from existing Terminals and reconnect conduit and power to new Terminals.	
Shipment: 4 weeks after your PO is received.	Warranty: As per manufacturer's warranty.	
Terms: Net 30 days after your order ships. 1 1/2% service charge for balances over 30 days old.	Total Installation/Test/Calibrate/Training Price.	Add
FOB: Factory	Freight is Prepaid and added to your order.	Add
25% Restocking charge - No returns after 30 days.	Sales Tax (%) (Unless exempt for this purchase)	Add
Quotation is valid 30 days from the date issued.	Your Total Investment	

Quoted by: John Grzybowski	Accepted by:
Title: General Service Manager	Title:
Date: 1/13/2021	Date:

Option 2

Pence, Becky

From: Mashuda, Barry
Sent: Wednesday, January 13, 2021 11:54 AM
To: Pence, Becky
Subject: FW: Tech Connections
Attachments: 1280 w custom program.pdf

From: Josh Cordell <josh@creamcityscale.com>
Sent: Wednesday, January 13, 2021 11:37 AM
To: Mashuda, Barry <bmashuda@co.green-lake.wi.us>
Subject: Re: Tech Connections

Barry,

Attached is the updated quote for the new Rice Lake 1280 w/ custom program to track Customer and Products. This quote will cover the installation, calibration, and training at both facilities. Since you currently have kiosk printers and heaters, I have included new ones in the price, but can be deducted if you feel that your equipment is in good working order. I never did get to the Manchester location to see if the enclosure is in good shape to reuse. The one at your Green Lake location was in good shape and I recommend just replacing the door. The quote includes new 24 x 24 doors only at both facilities. If you feel that the entire kiosk needs to be replaced at either facility, please let me know and I can adjust my quote for you to include new. If you have any questions, please let me know.



Josh Cordell
Service Manager
Cream City Scale
888-934-4448

On 2021-01-13 11:22 am, Mashuda, Barry wrote:

Josh,

Please disregard previous Email. We decided to go with the simple system without any Tech equipment.

Thanks,

4300 N. Bell School Rd
Loves Park, IL 61111
815/885-4448
Fax:
815/885-4127
Toll Free:
888/934-4448
E-mail:
www.creamcityscale.com



The scale people since 1921

ISO / IEC 17025 CERTIFIED

Branch Office:
490 Enterprise Drive
Lake Mills, WI 53551
920/648-4448

KIOSK REPLACEMENT (GREEN LAKE)

Green Lake, WI

Requested by: Barry Mashuda

Equipment Package – (1) component is for each facility

- (2) Rice Lake 1280 indicator panel mount
- (2) Hoffman kiosk heater, need for direct thermal printers
- (2) APC battery back ups
- (2) Datamax serial direct thermal printer
- (8) Rolls of Direct Thermal printer tickets
- (2) Hoffman 24 x 24 door only (Need for new cut out dimensions of 1280)
- Revolution – Rice Lake Weighing Systems Database interface software

Equipment Package.....\$ 12,122.00

Custom Program for tracking Products and Customers

- Custom Truck In/Out program with tracking of Products and Customers
- Tickets Format:
 - Site Information (Ticket Header– Address of truck process)
 - Ticket #
 - Truck #
 - Time In/Out
 - Product
 - Customer
 - Gross
 - Tare
 - Net

Custom Program.....\$ 1,500.00

4300 N. Bell School Rd
Loves Park, IL 61111
815/885-4448
Fax:
815/885-4127
Toll Free:
888/934-4448
E-mail:
www.creamcityscale.com



The scale people since 1921

ISO / IEC 17025 CERTIFIED

Branch Office:
490 Enterprise Drive
Lake Mills, WI 53551
920/648-4448

Please note:

- We will reuse the existing kiosk and make the existing indicator opening larger onsite to accommodate the new 1280 indicator
- Installation and calibration will occur on the same day
- Transactions can be pulled from indicator using a USB flash drive and open with Revolution.
- This quote covers the installation, calibration, testing, training of how to use the new equipment at both facilities replacing the current GSE560 indicator that have been discontinued
- New Datamax printers, and Hoffman Heaters are options. Can use existing if functioning properly
- Printer and Heater if removed from quote, CCS will send over new total for both sites

*Equipment Package: Software, Hardware, Labor
Program/labor hours are an estimate only, additional hours are billable if necessary.*

(1) Trip, (2) technicians, (2) Trucks, (16) hours onsite time/training support

Estimated Project Cost for both facilities.....\$ 16,972.00

Signing below indicates approval of the above listed Scope of Work.

Customer Signature
Proposal # 20211404

Cream City Stateline Scale
Josh Cordell 1-13-2021

This quotation is valid for 30 days.
Terms of this contract are: 50% due on acceptance, balance due on completion.
A signed Scope of Work/Sequence of Operation must be on file before programming begins.
Freight charges and taxes, if applicable will be added to the invoice.

**Customer Signature on quotation guarantees full payment of the project as quoted. If payment in full is not reached within 30 days, finance charges will be added to past due accounts. The monthly rate is 1.5%, APR of 18%.*

Pence, Becky

Subject: Auction purchases - Invoice: 201222-107988-158

From: bid@wisconsinsurplus.com

Date: December 22, 2020 at 11:16:09 AM CST

To: "Nitzke, Josh" <jnitzke@co.green-lake.wi.us>

Subject: Auction purchases - Invoice: 201222-107988-158



2600 STH 78 South -- PO Box 113
Mount Horeb, WI 53572
608-437-2001
Sellers Permit/Tax ID: 456-1028844448-04
FEIN: 39-1982769

Bid total: 18500.00

Premium: 1665.00

Sub-total: 20165.00

Crawford 5.5% (0.055) Tax: 1109.08 (Tax Exempt)

Total: 21274.08 **20,165.00**

Balance Due: 21274.08 **20,165.00**

Invoice

#201222-107988-158
12/22/2020

Bidder Item Qty Description Tax Amou

107988 43341 1 **1990 Sno Go MP-3D Self-Powered Loader Mount Snowblower** 12.09 18500.00

- **DETAILS:** Serial#: 3452 -- Hours: 477.3 -- Engine: 250hp 3306B Diesel -- **Loader not included**
- **PROVIDED CONDITION:** Good overall condition -- Personal Inspection Recommended
- **CONDITION DISCLAIMER:** Item sells in AS IS condition with any listed, not listed, known, unknown, pictured or not pictured defects. It is the bidder's full responsibility to inspect and verify condition(s). This item was described by the seller to the best of their ability by non-mechanic personnel. Item likely has defects - Rust, Dings, Dents, Scratches, Stains, Wear, Leaks, Holes, Dirt, etc. Bidders are strongly encouraged to inspect prior to bidding. This is a used item. Placing a bid indicates you agree to this disclaimer.
- **SELLER INVENTORY #:** 890
- **SELLER:** Crawford County Highway Dept.
- **LOCATION:** 21515 State Hwy 27, Seneca, WI 54654
- **CONTACT:** Cory Folbrecht at 608-734-9551 or cfolbrecht@crawfordcountywi.org - Inspections are highly encouraged. Please call or email with questions and to schedule appointments for inspection or pickup - Contact for an appointment - **Appointments are required, no walk-ins. M-F 7am to 3:30pm**
- **Click on Photo or Item # for full Details**

Bid total: 18500.00

Intergovernmental Agreement Between North Central Wisconsin Counties For Highway Department Mutual Aid

This *Intergovernmental Agreement Between North Central Region Wisconsin Counties For Highway Department Mutual Aid* (“Agreement”) is effective on the date a North Central Region Wisconsin (“NCR”) county signs this Agreement and provides a copy to the other NCR Member Counties, and is being entered into by and between Shawano County, a body corporate, and other body corporate NCR counties (collectively, the “Parties” or “Member Counties”), whose contact information is found below on the Signature Pages of this Agreement.

WHEREAS, the Parties agree and acknowledge that emergencies, natural disasters and manmade catastrophes do not conform to designated jurisdiction boundaries, and can be more effectively handled by the agreed upon pooling of equipment, staff and/or services; and

WHEREAS, the Parties have determined that, because of geographical considerations, it is in the best interests of NCR counties, by and through their Highway Departments and Highway Commissioners, to coordinate with each other for the provision of Mutual Aid; and

WHEREAS, Wisconsin Statutes Section 66.0301 authorizes any municipality to contract with other municipalities for the receipt or furnishing of services, such as highway maintenance.

NOW, THEREFORE, in consideration of the mutual covenants and agreements hereinafter set forth, the Parties agree as follows:

1. Purpose

The Wisconsin DOT Highway Maintenance Manual states, *“The goal of winter maintenance is to make roadways safe within the limitations of resources...”* NCR Highway Commissioners have discussed how to best ensure the continuity of plow services in NCR if a significant percentage of a Member County’s plow drivers are sick, quarantined and/or otherwise unavailable. This Agreement applies to any sort of weather disaster, pandemic event or other regional or county-level event that would significantly impact a Member County’s equipment and staff levels.

NCR Highway Departments are committed to making state and county highway systems as safe as possible within the limitations of resources during winter events. Therefore, the Member Counties agree to pledge Mutual Aid to each other pursuant to this Agreement. Every event will pose different challenges, but the commitment to respond to the extent reasonably practicable to each other’s needs is the foundation of this Agreement.

It is recognized and acknowledged that in certain situations, including but not limited to emergencies, natural disasters and man-made catastrophes, the use of an Aiding County’s equipment, staff and/or services to perform functions outside the Aiding County’s jurisdictional limits is desirable and necessary to preserve and protect the health, safety and welfare of the public, and to ensure effective and efficient Highway Department operations.

2. Definitions

- a. Mutual Aid: A definite and prearranged plan whereby equipment, staff and/or services are provided to an Affected County by an Aiding County pursuant to this Agreement.
- b. NCR Counties: Wisconsin counties located in the North Central portion of the state, including the counties of: 1) Shawano; 2) Waupaca; 3) Waushara; 4) Green Lake; 5) Marquette; 6) Adams; 7) Portage; 8) Wood; 9) Marathon; 10) Langlade; 11) Lincoln; 12) Price; 13) Oneida; 14) Forest; 15) Florence; 16) Menominee; 17) Vilas; and 18) Price.
- c. Member County: A NCR county which is a Party to this Agreement, as evidenced by a NCR county signing this Agreement and providing a copy to the other NCR Member Counties.
- d. Affected County: A Member County which requests Mutual Aid from an Aiding County in the event of an emergency;
- e. Aiding County: A Member County which provides Mutual Aid to an Affected County;
- f. Emergency: An occurrence or condition in an Affected County's territorial jurisdiction which results in a situation of such magnitude and/or consequence that it cannot be adequately handled by the Affected County alone.

3. Authority and Action to Effect Mutual Aid

Member County's Highway Commissioners or designees may render and/or request Mutual Aid from other Member Counties. Mutual Aid shall be rendered to the extent reasonably practicable, given the equipment, staff and/or services requested by the Affected County and available to the Aiding County. The judgment of the Aiding County Highway Commissioner or designee shall be final as to the equipment, staff and/or services available to render Mutual Aid to the Affected County.

In general, the state highway system and principle county highways are the regional priority routes. Aiding Counties will assist Affected Counties as reasonably practicable to ensure these priority routes are addressed as a matter of regional priority. Each NCR Highway Department will prepare, and have on hand ahead of time, normal plow route maps, and a list of priority routes and roadways, that are critical to maintain.

Each Member County has its own organizational structure, and its own method of on-call superintendents for after hour emergencies. For the purposes of Mutual Aid between Member Counties, the primary contacts should be the Highway Commissioners.

When an emergency occurs, and conditions are such that the Highway Commissioner or designee of an Affected County determines it advisable to request Mutual Aid pursuant to this Agreement, he/she shall notify the Aiding County of the nature and location of the emergency, and the type and amount of equipment, staff and/or services requested.

The Highway Commissioner or designee of the Aiding County shall take the following actions as soon as reasonably practical upon receiving a request for Mutual Aid from another Member County:

- a. Determine what equipment, staff and/or services are requested by the Affected County;
- b. Determine if the requested equipment, staff and/or services can be committed by the Aiding County in response to the request from the Affected County;
- c. Dispatch as soon as reasonably practical the requested equipment, staff and/or services, to the extent reasonably practicable, to the location of the emergency reported by the Affected County;
- d. Notify the Affected County as soon as reasonably practicable whether any or all of the requested equipment, staff and/or services can or cannot be provided.

4. Jurisdiction over Staff and Equipment

Aiding County staff dispatched to provide Mutual Aid to an Affected County pursuant to this Agreement shall remain employees of the Aiding County. Staff of the Aiding County shall report for direction and assignment at the Highway Shop nearest the scene of the emergency in the Affected County, or as otherwise directed by the Affected County's Highway Commissioner or designee. The Aiding County shall at all times have the right to withdraw any and all Mutual Aid upon the directive of the Aiding County's Highway Commissioner or designee, provided, however, that the Aiding County withdrawing such Mutual Aid shall make reasonable efforts to notify, as soon as reasonably practicable, the Affected County's Highway Commissioner or designee of the withdrawal of the requested Mutual Aid, and of the extent of the withdrawal.

5. Compensation for Aid

Work performed by the Aiding County shall be billed to the Affected County per the Wisconsin Uniform Cost Accounting System, shall include any additional expenses regarding Aiding County policies for overtime and specialty pay rates and shall be paid by the Affected County.

6. Insurance

Each Party shall procure and maintain, at its sole and exclusive expense, insurance coverage, including comprehensive liability, personal injury, property damage, worker's

compensation, with minimum limits of \$1,000,000 auto and \$3,000,000 combined single limit general liability and professional liability. These obligations may be satisfied by a Party's membership in a self-insurance pool, a self-insurance plan or an arrangement with an insurance provider approved by the state.

7. Waiver of Claims

Each Party agrees to waive any and all claims against all other Parties for any loss, damage, personal injury or death occurring in consequence of the performance of this Agreement provided, however, that such claims are not the result of negligent and/or intentional act(s) by a Party or its staff, or done by them with an intentional disregard of the safety, health, life or property of another.

All employee benefits, wages, disability payments, pensions and worker's compensation claims shall be the sole and exclusive responsibility of each Party regarding its own staff.

8. Non-Liability for Failure to Render Aid

The rendering of Mutual Aid under the terms of this Agreement shall not be mandatory. It is the responsibility of the Aiding Department to notify, as soon as reasonably practical, the Affected Department of the Aiding Department's inability to respond.

No liability of any kind or nature shall be attributed to or be assumed, whether expressly or implied, by a Party, its duly authorized agents and/or staff, for failure or refusal to render Mutual Aid. Nor shall there be any liability of a Party for withdrawal of Mutual Aid once provided pursuant to the terms of this Agreement.

9. Auto-Renewal of Agreement and Termination

This Agreement will automatically renew on October 1st of each year unless a Member County provides written *Notice to Withdraw* to the other NCR Member Counties, which shall be effective upon receipt.

10. Governing Law

This Agreement shall be governed by, and construed and enforced in accordance with, the laws of the State of Wisconsin.

11. Multiple Counterparts to Agreement

This Agreement may be electronically signed and forwarded via email, and may be executed in multiple counterparts, each of which shall be deemed an original, but all of which shall be deemed one instrument.

SIGNATURE PAGES

IN CONSIDERATION of the mutual commitments contained herein, and by signing below, the signatories state and affirm that they have authority to bind, and do bind, the Member County entity they are signing on behalf of to the terms and conditions of this Agreement.

FOR SHAWANO COUNTY:

FOR WAUPACA COUNTY:

X _____
Signature

X _____
Signature

X _____
Date Signed

X _____
Date Signed

Signatories Name Printed or Typed

Signatories Name Printed or Typed

Title

Title

Company/Entity Name

Company/Entity Name

Street Address

Street Address

City, State and Zip Code

City, State and Zip Code

Contact Phone Number

Contact Phone Number

Contact Email Address

Contact Email Address

FOR WAUSHARA COUNTY:

X _____
Signature

X _____
Date Signed

Signatories Name Printed or Typed

Title

Company/Entity Name

Street Address

City, State and Zip Code

Contact Phone Number

Contact Email Address

FOR GREEN LAKE COUNTY:

X _____
Signature

X _____
Date Signed

Signatories Name Printed or Typed

Title

Company/Entity Name

Street Address

City, State and Zip Code

Contact Phone Number

Contact Email Address

FOR MARQUETTE COUNTY:

X _____
Signature

X _____
Date Signed

Signatories Name Printed or Typed

Title

Company/Entity Name

Street Address

City, State and Zip Code

Contact Phone Number

Contact Email Address

FOR ADAMS COUNTY:

X _____
Signature

X _____
Date Signed

Signatories Name Printed or Typed

Title

Company/Entity Name

Street Address

City, State and Zip Code

Contact Phone Number

Contact Email Address

FOR PORTAGE COUNTY:

X _____
Signature

X _____
Date Signed

Signatories Name Printed or Typed

Title

Company/Entity Name

Street Address

City, State and Zip Code

Contact Phone Number

Contact Email Address

FOR WOOD COUNTY:

X _____
Signature

X _____
Date Signed

Signatories Name Printed or Typed

Title

Company/Entity Name

Street Address

City, State and Zip Code

Contact Phone Number

Contact Email Address

FOR MARATHON COUNTY:

FOR LANGLADE COUNTY:

X _____
Signature

X _____
Signature

X _____
Date Signed

X _____
Date Signed

Signatories Name Printed or Typed

Signatories Name Printed or Typed

Title

Title

Company/Entity Name

Company/Entity Name

Street Address

Street Address

City, State and Zip Code

City, State and Zip Code

Contact Phone Number

Contact Phone Number

Contact Email Address

Contact Email Address

FOR LINCOLN COUNTY:

FOR PRICE COUNTY:

X _____
Signature

X _____
Signature

X _____
Date Signed

X _____
Date Signed

Signatories Name Printed or Typed

Signatories Name Printed or Typed

Title

Title

Company/Entity Name

Company/Entity Name

Street Address

Street Address

City, State and Zip Code

City, State and Zip Code

Contact Phone Number

Contact Phone Number

Contact Email Address

Contact Email Address

FOR ONEIDA COUNTY:

X _____
Signature

X _____
Date Signed

Signatories Name Printed or Typed

Title

Company/Entity Name

Street Address

City, State and Zip Code

Contact Phone Number

Contact Email Address

FOR FOREST COUNTY:

X _____
Signature

X _____
Date Signed

Signatories Name Printed or Typed

Title

Company/Entity Name

Street Address

City, State and Zip Code

Contact Phone Number

Contact Email Address

FOR FLORENCE COUNTY:

X _____
Signature

X _____
Date Signed

Signatories Name Printed or Typed

Title

Company/Entity Name

Street Address

City, State and Zip Code

Contact Phone Number

Contact Email Address

FOR MENOMINEE COUNTY:

X _____
Signature

X _____
Date Signed

Signatories Name Printed or Typed

Title

Company/Entity Name

Street Address

City, State and Zip Code

Contact Phone Number

Contact Email Address

FOR VILAS COUNTY:

X _____
Signature

X _____
Date Signed

Signatories Name Printed or Typed

Title

Company/Entity Name

Street Address

City, State and Zip Code

Contact Phone Number

Contact Email Address

FOR PRICE COUNTY:

X _____
Signature

X _____
Date Signed

Signatories Name Printed or Typed

Title

Company/Entity Name

Street Address

City, State and Zip Code

Contact Phone Number

Contact Email Address

1/1/2020 Thru 11/30/2020 (11 MONTHS EST DPRN) (ALL WO TYPES) (ALL WO KINDS)

Equipment	Revenue	Total-cost	Fuel	Lube	Labor	Fringe	Part	Overhead	Tire/batt	Sundry	Dprn-mnthly	Units
002	12642.93	6784.47	4129.54	49.49	232.99	119.83	22.69	475.65	1754.28	0.00	0.00	17874.00
003	14415.72	13214.83	4303.76	64.83	942.98	484.97	5493.21	1925.08	0.00	0.00	0.00	26829.00
004	4229.24	4325.05	852.37	0.00	0.00	0.00	298.26	0.00	0.00	0.00	3174.42	8010.00
005	0.00	8750.19	1803.04	33.46	140.02	72.01	1487.84	285.82	0.00	0.00	4928.00	0.00
006	5712.84	8853.73	860.52	34.21	1631.65	839.16	2157.16	3331.03	0.00	0.00	0.00	402.50
007	12324.32	10264.24	3374.89	19.23	76.97	39.59	3.76	157.13	0.00	0.00	6592.67	681.75
008	5705.55	5209.65	1300.15	69.44	827.48	425.57	652.19	1689.33	245.49	0.00	0.00	404.50
013	9121.22	4335.15	1585.92	51.27	544.82	280.20	506.44	1112.26	254.24	0.00	0.00	504.25
015	2581.10	2493.14	989.96	40.80	599.40	308.27	554.71	0.00	0.00	0.00	0.00	147.50
016	8538.54	6307.78	2110.70	0.00	355.51	182.84	2932.95	725.78	0.00	0.00	0.00	595.50
017	9621.98	13532.51	1730.29	45.67	1184.60	609.24	7288.46	2418.35	255.90	0.00	0.00	380.00
018	9517.17	4160.13	2515.16	35.00	390.55	200.86	221.23	797.33	0.00	0.00	0.00	666.50
019	8671.96	7215.88	2459.62	62.75	618.10	317.89	2372.94	1261.84	122.74	0.00	0.00	600.75
020	8167.61	18972.17	1500.27	93.41	817.32	420.35	14472.24	1668.58	0.00	0.00	0.00	149.75
022	438.40	2915.16	25.68	0.00	418.90	215.44	1040.12	855.18	359.84	0.00	0.00	8.25
024	1769.54	3202.75	850.09	11.55	565.63	290.90	329.84	1154.74	0.00	0.00	0.00	123.25
025	8560.15	6128.98	2312.19	5.27	893.78	459.67	633.42	1824.65	0.00	0.00	0.00	587.00
026	10150.94	5556.40	1598.71	277.36	821.92	422.71	757.71	1677.99	0.00	0.00	0.00	196.50
027	31146.62	28867.21	5721.18	187.27	909.18	467.59	1470.06	1856.10	1993.25	0.00	16262.58	517.50
028	37475.90	39487.27	7248.91	395.52	2965.19	1529.33	5172.85	6053.50	1059.30	0.00	15062.67	631.25
029	17286.34	9538.08	3113.40	188.86	753.81	387.68	3316.90	1538.88	238.55	0.00	0.00	625.25
030	8900.32	19250.73	1368.48	93.52	2842.85	1462.08	5411.35	5803.70	0.00	0.00	2268.75	120.00
031	25938.69	42830.00	6654.94	113.00	1380.21	709.84	12712.64	2817.74	3399.13	0.00	15042.50	433.75
032	18512.84	24419.37	5444.25	317.69	2349.10	1208.14	5846.65	4795.73	4457.81	0.00	0.00	308.75
033	35048.12	21262.70	5528.33	91.02	1415.40	727.94	10610.42	2889.59	0.00	0.00	0.00	587.50
036	35013.43	33386.18	6926.42	420.36	1306.04	671.70	1184.90	2666.31	2918.45	0.00	17292.00	589.25
040	7737.89	38275.45	1291.09	104.90	5807.67	2986.88	12570.06	11856.43	0.00	0.00	3658.42	115.25
042	14159.41	6420.45	807.13	127.68	756.05	524.11	2182.30	1543.47	479.71	0.00	0.00	206.25
044	26127.98	30158.25	5159.45	285.60	3655.20	1879.87	7805.43	7462.14	3910.56	0.00	0.00	437.75
045	13100.50	18429.49	2414.37	309.21	2041.83	1050.11	4758.65	4168.44	3686.88	0.00	0.00	221.50
048	20693.67	12821.16	3359.59	135.36	1797.23	924.32	2456.22	3669.07	479.37	0.00	0.00	348.00
050	26811.40	28109.55	4968.60	368.95	1105.81	568.72	1998.03	2257.52	0.00	0.00	16841.92	449.50
051	12286.52	16000.44	2730.87	132.45	2518.88	1295.46	4180.42	5142.36	0.00	0.00	0.00	204.75
052	15073.02	18852.63	3170.93	137.48	2528.27	1300.29	4139.17	5161.58	2414.91	0.00	0.00	251.50
053	31024.88	27858.61	5233.32	225.51	700.52	360.28	963.12	1430.07	1936.12	0.00	17009.67	520.50
054	6017.74	3774.34	1100.38	112.35	595.96	306.50	442.49	1216.66	0.00	0.00	0.00	100.50
058	27854.73	10718.66	6976.55	255.60	768.83	395.41	752.71	1569.56	0.00	0.00	0.00	465.00
059	19456.74	6200.28	4130.41	172.62	523.24	269.10	36.69	1068.22	0.00	0.00	0.00	328.00
102	368.72	2257.47	56.77	4.62	385.57	198.30	825.04	787.17	0.00	0.00	0.00	11.00
103	0.00	1470.17	0.00	6.93	29.23	15.03	55.81	59.67	0.00	0.00	1303.50	162.50
110R	2990.69	2695.07	0.00	0.00	753.96	387.76	14.12	1539.23	0.00	0.00	0.00	206.50
110S	3170.94	1269.07	0.00	0.00	356.90	183.55	0.00	728.62	0.00	0.00	0.00	219.00
111R	3734.78	590.23	0.00	0.00	124.41	63.98	147.86	253.98	0.00	0.00	0.00	259.00
111S	3734.78	25.76	0.00	0.00	0.00	0.00	25.76	0.00	0.00	0.00	0.00	259.00
112R	3470.88	279.06	0.00	0.00	78.48	40.36	0.00	160.22	0.00	0.00	0.00	240.00
112S	3535.77	1244.57	0.00	0.00	350.01	180.01	0.00	714.55	0.00	0.00	0.00	244.50
113R	4023.18	4996.15	0.00	0.00	608.56	312.98	1928.38	1242.40	0.00	0.00	903.83	279.00
113S	4023.18	2917.16	0.00	0.00	349.12	179.55	25.76	712.73	0.00	0.00	1650.00	279.00
115	62.51	441.21	20.79	0.00	118.23	60.81	0.00	241.38	0.00	0.00	0.00	4.50
130	2439.07	925.04	40.96	13.86	134.57	69.21	289.77	274.72	101.95	0.00	0.00	63.75
133	3115.74	552.35	216.68	12.48	83.34	42.86	26.85	170.14	0.00	0.00	0.00	103.00
136	3564.97	1691.05	167.41	69.31	363.03	186.71	66.51	741.13	96.95	0.00	0.00	117.00
138	509.60	6831.84	35.73	0.00	1464.56	753.22	1588.38	2989.95	0.00	0.00	0.00	20.00
139	1006.46	5003.36	0.00	0.00	1267.63	651.94	495.91	2587.88	0.00	0.00	0.00	39.50
142	1243.55	1428.87	0.00	5.37	157.63	81.07	48.99	321.81	0.00	0.00	814.00	42.50
143	998.52	3693.61	119.14	4.62	776.45	399.33	24.26	1585.14	0.00	0.00	784.67	231.50
193	1957.40	1631.96	188.72	0.00	109.47	56.30	4.42	223.47	0.00	0.00	1049.58	98.50
194	59.52	836.67	17.62	0.00	145.66	74.91	192.02	297.38	109.08	0.00	0.00	3.00
195	42231.30	15819.70	4838.25	95.39	1590.40	817.94	1276.34	3246.88	0.00	0.00	3954.50	722.25
200	637.40	112.66	0.00	0.00	11.69	6.01	71.10	23.86	0.00	0.00	0.00	10.00
206	3963.28	2580.41	734.45	58.71	285.00	146.58	653.89	581.83	119.95	0.00	0.00	248.00
207	1041.57	2588.62	0.00	0.00	606.47	311.91	432.11	1238.13	0.00	0.00	0.00	73.50
208	2476.42	41.56	0.00	0.00	11.69	6.01	0.00	23.86	0.00	0.00	0.00	111.75
209	2603.25	4981.57	0.00	71.69	659.44	339.15	484.20	1346.26	0.00	0.00	2080.83	68.25
210	21.68	3347.67	0.00	0.00	572.82	294.60	1310.83	1169.42	0.00	0.00	0.00	1.00
211	3715.28	617.83	0.00	0.00	0.00	0.00	0.00	0.00	0.00	0.00	617.83	170.75
216	44.64	0.00	0.00	0.00	0.00	0.00	0.00	0.00	0.00	0.00	0.00	15.50
221	23503.99	26034.98	731.75	34.91	1650.69	848.95	75.44	3369.91	0.00	0.00	19323.33	122.00
225	10540.63	8332.32	155.29	485.89	1866.68	960.03	940.80	3810.90	112.73	0.00	0.00	137.75
304	6793.71	4589.05	458.09	120.57	619.56	318.64	561.84	1264.83	1245.52	0.00	0.00	214.75
308	414.60	2704.40	0.00	21.82	764.46	393.16	-35.69	1560.65	0.00	0.00	0.00	14.00
310	7514.59	8231.75	1409.42	114.75	1061.21	545.78	2704.10	2166.49	230.00	0.00	0.00	240.00
311	9115.45	8779.09	1317.81	57.17	1087.51	559.31	3537.16	2220.13	0.00	0.00	0.00	292.50
312	8668.05	8127.52	1141.47	142.26	1534.38	789.13	1387.85	3132.43	0.00	0.00	0.00	277.00
313	11034.04	24987.37	1707.29	268.54	2612.35	1343.53	5190.89	5333.14	2558.63	0.00	5973.00	291.50
323	2121.22	985.18	108.30	0.00	241.67	124.29	17.55	493.37	0.00	0.00	0.00	73.00
326	1350.99	1147.16	21.44	13.09	69.83	35.91	16.81	142.57	847.51	0.00	0.00	60.50
334	20267.90	11652.05	2440.92	164.14	1443.80	742.55	3913.15	2947.49	0.00	0.00	0.00	346.75
336	14057.44	10138.76	1769.42	104.94	1411.50	725.93	3245.38	2881.59	0.00	0.00	0.00	239.50
356	11382.98	11862.26	1765.97	58.00	268.07	137.87	378.60	547.25	0.00	0.00	8706.50	268.50

1/1/2020 Thru 11/30/2020 (11 MONTHS EST DPRN) (ALL WO TYPES) (ALL WO KINDS)

<u>Equipment</u>	<u>Revenue</u>	<u>Total-cost</u>	<u>Fuel</u>	<u>Lube</u>	<u>Labor</u>	<u>Fringe</u>	<u>Part</u>	<u>Overhead</u>	<u>Tire/batt</u>	<u>Sundry</u>	<u>Dprn-mnthly</u>	<u>Units</u>
432	775.20	366.94	0.00	0.00	31.27	16.08	0.00	63.84	0.00	0.00	255.75	42.50
436	615.60	2175.53	0.00	0.00	121.50	62.49	886.42	248.04	0.00	0.00	857.08	33.75
455	7106.13	5469.51	632.08	194.81	1198.51	616.39	310.77	2446.80	70.15	0.00	0.00	113.00
456	4451.24	9208.05	400.14	194.69	1034.30	531.94	4935.47	2111.51	0.00	0.00	0.00	75.50
457	16444.07	7457.04	1666.04	193.23	1416.65	728.58	560.40	2892.14	0.00	0.00	0.00	257.75
458	1231.20	479.96	0.00	0.00	134.98	69.42	0.00	275.56	0.00	0.00	0.00	67.50
459	0.00	677.30	0.00	0.00	190.48	97.96	0.00	388.86	0.00	0.00	0.00	0.00
500	14772.63	9788.87	904.81	274.50	1327.55	682.76	3889.12	2710.13	0.00	0.00	0.00	352.00
501	36.08	0.00	0.00	0.00	0.00	0.00	0.00	0.00	0.00	0.00	0.00	1.00
570	8946.70	3751.36	349.91	0.00	19.35	9.95	1338.78	39.50	133.95	0.00	1859.92	526.25
571	8970.54	4918.43	528.59	0.00	190.52	97.98	1598.68	388.95	253.79	0.00	1859.92	523.75
572	0.00	0.00	0.00	0.00	0.00	0.00	0.00	0.00	0.00	0.00	0.00	0.00
573	1015.10	3049.57	179.88	8.41	358.07	184.16	1588.05	731.00	0.00	0.00	0.00	26.50
574	279.44	20.80	0.00	0.00	5.85	3.01	0.00	11.94	0.00	0.00	0.00	43.00
575	362.41	172.45	0.00	0.00	48.50	24.94	0.00	99.01	0.00	0.00	0.00	15.50
576	10477.26	13608.74	1012.00	11.98	1320.49	679.13	7638.62	2695.83	250.69	0.00	0.00	249.00
577	6318.73	1859.02	220.22	4.62	199.33	102.52	925.37	406.96	0.00	0.00	0.00	160.00
578	6929.18	1701.75	29.48	0.00	140.14	72.07	151.87	286.11	0.00	0.00	1022.08	166.00
581	5069.24	6696.91	276.79	117.95	957.42	492.40	1580.94	1954.54	119.70	0.00	1197.17	122.00
586	4501.45	2994.94	89.88	19.63	655.85	337.30	553.39	1338.89	0.00	0.00	0.00	108.50
651	143.64	0.00	0.00	0.00	0.00	0.00	0.00	0.00	0.00	0.00	0.00	4.50
655	223.44	0.00	0.00	0.00	0.00	0.00	0.00	0.00	0.00	0.00	0.00	7.00
657	383.04	0.00	0.00	0.00	0.00	0.00	0.00	0.00	0.00	0.00	0.00	12.00
720	1088.95	41.56	0.00	0.00	11.69	6.01	0.00	23.86	0.00	0.00	0.00	75.00
726	80.25	0.00	0.00	0.00	0.00	0.00	0.00	0.00	0.00	0.00	0.00	5.50
727	1481.81	1201.09	0.00	0.00	95.46	49.10	0.00	194.86	0.00	0.00	861.67	111.75
728	1440.72	1483.39	0.00	0.00	153.46	78.92	0.00	313.26	0.00	0.00	937.75	108.25
730	1270.65	397.03	0.00	0.00	48.50	24.94	0.00	99.01	0.00	0.00	224.58	88.00
731	1388.99	1470.29	0.00	0.00	157.50	81.00	0.00	321.54	0.00	0.00	910.25	104.75
732	1445.34	1912.55	0.00	0.00	201.83	103.80	899.71	412.04	0.00	0.00	295.17	109.00
733	1495.07	542.45	0.00	0.00	152.55	78.46	0.00	311.44	0.00	0.00	0.00	112.75
736	1276.28	2253.56	0.00	0.00	370.82	190.71	0.00	757.03	0.00	0.00	935.00	96.25
744	1332.63	624.21	0.00	0.00	160.66	82.63	52.93	327.99	0.00	0.00	0.00	100.50
745	232.05	603.67	0.00	0.00	169.77	87.31	0.00	346.59	0.00	0.00	0.00	17.50
748	1367.57	333.72	0.00	0.00	93.85	48.27	0.00	191.60	0.00	0.00	0.00	100.75
750	1761.60	1419.53	0.00	0.00	133.48	68.65	2.57	272.50	0.00	0.00	942.33	132.75
751	1030.97	266.74	0.00	0.00	75.02	38.58	0.00	153.14	0.00	0.00	0.00	77.75
752	1213.29	387.70	0.00	0.00	109.04	56.08	0.00	222.58	0.00	0.00	0.00	91.50
753	1445.34	1740.49	0.00	0.00	214.23	110.18	37.34	437.32	0.00	0.00	941.42	109.00
754	80.25	316.12	0.00	0.00	88.90	45.72	0.00	181.50	0.00	0.00	0.00	5.50
754R	0.00	539.92	0.00	0.00	0.00	0.00	0.00	0.00	0.00	0.00	539.92	0.00
758	1436.76	885.26	0.00	0.00	248.96	128.04	0.00	508.26	0.00	0.00	0.00	108.00
759	0.00	129.71	0.00	0.00	36.48	18.76	0.00	74.47	0.00	0.00	0.00	0.00
820	966.90	240.76	0.00	0.00	23.38	12.02	157.63	47.73	0.00	0.00	0.00	77.00
826	68.75	0.00	0.00	0.00	0.00	0.00	0.00	0.00	0.00	0.00	0.00	5.50
827	1323.59	1100.58	0.00	0.00	95.98	49.36	5.81	195.93	0.00	0.00	753.50	109.75
828	1178.87	1746.47	0.00	0.00	153.46	78.92	0.00	313.26	0.00	0.00	1200.83	97.75
830	1023.77	174.17	0.00	0.00	0.00	0.00	0.00	0.00	0.00	0.00	174.17	81.50
831	1011.24	4077.06	0.00	0.00	690.65	355.20	504.73	1409.98	0.00	0.00	1116.50	83.75
832	1332.63	1357.04	0.00	0.00	243.89	125.43	249.15	497.89	0.00	0.00	240.68	110.50
833	1178.87	550.56	0.00	0.00	152.55	78.46	8.11	311.44	0.00	0.00	0.00	97.75
836	1154.75	2729.85	0.00	0.00	323.94	166.60	774.98	661.33	0.00	0.00	803.00	95.75
844	1085.40	349.69	0.00	0.00	98.34	50.58	0.00	200.77	0.00	0.00	0.00	90.00
845	168.84	229.56	0.00	0.00	64.56	33.20	0.00	131.80	0.00	0.00	0.00	14.00
848	1142.79	2137.93	0.00	0.00	292.89	150.63	1096.49	597.92	0.00	0.00	0.00	93.50
850	1568.24	1275.80	0.00	0.00	133.48	68.65	0.00	272.50	0.00	0.00	801.17	130.00
851	798.98	839.74	0.00	0.00	172.16	88.54	227.60	351.44	0.00	0.00	0.00	66.25
852	1067.31	2532.46	0.00	0.00	258.65	133.02	1612.78	528.01	0.00	0.00	0.00	88.50
853	1266.30	1401.84	0.00	0.00	168.93	86.88	0.00	344.86	0.00	0.00	801.17	105.00
854	37.50	317.85	0.00	0.00	89.39	45.97	0.00	182.49	0.00	0.00	0.00	3.00
856	190.58	0.00	0.00	0.00	0.00	0.00	0.00	0.00	0.00	0.00	0.00	6.50
857	293.20	0.00	0.00	0.00	0.00	0.00	0.00	0.00	0.00	0.00	0.00	10.00
858	1314.61	1058.89	0.00	0.00	231.44	119.03	235.93	472.49	0.00	0.00	0.00	108.75
859	6.03	677.30	0.00	0.00	190.48	97.96	0.00	388.86	0.00	0.00	0.00	0.50
886	307.86	1705.44	0.00	0.00	175.35	90.18	1081.93	357.98	0.00	0.00	0.00	10.50
920	540.76	0.00	0.00	0.00	0.00	0.00	0.00	0.00	0.00	0.00	0.00	36.25
922	27.33	0.00	0.00	0.00	0.00	0.00	0.00	0.00	0.00	0.00	0.00	2.00
926	27.32	892.51	0.00	0.00	237.80	122.30	46.94	485.47	0.00	0.00	0.00	2.00
927	1280.63	980.46	0.00	0.00	90.13	46.35	0.00	183.98	0.00	0.00	660.00	93.75
928	658.44	1424.41	0.00	0.00	160.58	82.59	0.00	327.82	0.00	0.00	853.42	48.00
928C	1712.00	681.08	0.00	0.00	0.00	0.00	0.00	0.00	0.00	0.00	681.08	133.75
930	706.38	83.89	0.00	0.00	23.59	12.13	0.00	48.17	0.00	0.00	0.00	50.25
931	976.70	1425.48	0.00	0.00	242.37	124.65	261.17	494.79	0.00	0.00	302.50	71.50
932	771.79	681.98	0.00	0.00	191.79	98.64	0.00	391.55	0.00	0.00	0.00	56.50
933	1181.60	577.26	0.00	0.00	162.34	83.49	0.00	331.43	0.00	0.00	0.00	86.50
933C	1663.36	2389.01	0.00	0.00	317.91	163.50	0.00	649.02	0.00	0.00	1258.58	129.75
936	778.62	1644.06	0.00	0.00	225.36	115.90	102.96	460.09	0.00	0.00	739.75	57.00
944	788.87	1050.06	0.00	0.00	236.76	121.77	208.20	483.33	0.00	0.00	0.00	57.75
945	184.41	247.31	0.00	0.00	69.55	35.77	0.00	141.99	0.00	0.00	0.00	13.50
948	638.35	846.48	0.00	0.00	234.13	120.41	13.95	477.99	0.00	0.00	0.00	45.75

1/1/2020 Thru 11/30/2020 (11 MONTHS EST DPRN) (ALL WO TYPES) (ALL WO KINDS)

<u>Equipment</u>	<u>Revenue</u>	<u>Total-cost</u>	<u>Fuel</u>	<u>Lube</u>	<u>Labor</u>	<u>Fringe</u>	<u>Part</u>	<u>Overhead</u>	<u>Tire/batt</u>	<u>Sundry</u>	<u>Dprn-mnthly</u>	<u>Units</u>
950	546.77	1446.93	0.00	0.00	138.04	70.99	0.00	281.82	0.00	0.00	956.08	40.00
951	713.75	304.26	0.00	0.00	85.57	44.01	0.00	174.68	0.00	0.00	0.00	52.25
952	628.36	1819.73	0.00	0.00	364.34	187.38	524.21	743.80	0.00	0.00	0.00	46.00
953	392.40	1370.39	0.00	0.00	116.52	59.93	0.00	237.86	0.00	0.00	956.08	36.00
954	30.06	422.21	0.00	0.00	106.93	54.99	42.00	218.29	0.00	0.00	0.00	2.00
958	614.69	1154.86	0.00	0.00	321.17	165.18	12.80	655.71	0.00	0.00	0.00	45.00
960	120.00	1190.75	0.00	0.00	0.00	0.00	0.00	0.00	0.00	0.00	1190.75	4.00
B-009	0.00	3590.58	0.00	0.00	0.00	0.00	0.00	0.00	0.00	0.00	3590.58	0.00
(24) GREE	942,737.06	906,998.49	143,404.97	8,017.57	92,567.28	47,746.86	195,276.22	187,753.44	36,217.13	0.00	196,015.02	79,561.00
(4) NORTI	942,737.06	906,998.49	143,404.97	8,017.57	92,567.28	47,746.86	195,276.22	187,753.44	36,217.13	0.00	196,015.02	79,561.00

Rows Processed 168

Show all data where the DOT_RGN_CD matches one of the values in this list 4
 and the DOT_CNTY_CD matches one of the values in this list 24
 and the USER_ID matches one of the values in this list 24BPENCE
 and the WKST_ADDR matches one of the values in this list MDC2523434
 and the MNTC_GL_ACCT matches one of the values in this list 185.01,185.02,185.03,185.04,185.05,185.06,185.08,185.09

For 01/01/20 - 11/30/20

Expenditure Summary Report

FJEXS01A

Periods 01 - 11

Hwy Expense Summary

100

<u>Account No/Description</u>	<u>Adjusted Budget</u>	<u>Y-T-D Encumb</u>	<u>Period Expended</u>	<u>Y-T-D Expended</u>	<u>Available Balance</u>	<u>Percent Used</u>
20 YEAR 3						
211 County Roads and Bridges						
53309 County Supervision						
20-211-29-53309-219-000 County Supervision	99,941.00	.00	130,278.25	130,278.25	-30,337.25	130.36
53309 County Supervision	99,941.00	.00	130,278.25	130,278.25	-30,337.25	130.36
53310 General Mtn. C.T.H's						
20-211-29-53310-219-000 General Maintenance - CTH's	905,464.00	.00	1,046,063.92	1,046,063.92	-140,599.92	115.53
53310 General Mtn. C.T.H's	905,464.00	.00	1,046,063.92	1,046,063.92	-140,599.92	115.53
53311 C.T.H's Winter Mtn.						
20-211-29-53311-219-000 Winter Maintenance - CTH's	751,260.00	.00	328,999.59	328,999.59	422,260.41	43.79
53311 C.T.H's Winter Mtn.	751,260.00	.00	328,999.59	328,999.59	422,260.41	43.79
53312 C.T.H's Bridge Mtn & Insp CTH's						
20-211-29-53312-219-000 Bridge Maintenance & Inspection - CTH's	13,485.00	.00	712.35	712.35	12,772.65	5.28
53312 C.T.H's Bridge Mtn & Insp CTH's	13,485.00	.00	712.35	712.35	12,772.65	5.28
53313 Reconstruction						
20-211-29-53313-219-000 Reconstruction - CTH's	2,073,362.00	.00	1,818,098.01	1,818,098.01	255,263.99	87.69
53313 Reconstruction	2,073,362.00	.00	1,818,098.01	1,818,098.01	255,263.99	87.69
53314 Overlay						
20-211-29-53314-219-000 Overlay	.00	.00	46,687.72	46,687.72	-46,687.72	.00
53314 Overlay	.00	.00	46,687.72	46,687.72	-46,687.72	.00
53315 Chip Seal Coat						
20-211-29-53315-219-000 Chip Seal Coat	240,598.00	.00	178,427.92	178,427.92	62,170.08	74.16
53315 Chip Seal Coat	240,598.00	.00	178,427.92	178,427.92	62,170.08	74.16
53317 Bridge Construction - CTH's						
20-211-29-53317-219-000 Bridge Construction CTH's	87,193.00	.00	14,327.02	14,327.02	72,865.98	16.43
53317 Bridge Construction - CTH's	87,193.00	.00	14,327.02	14,327.02	72,865.98	16.43
53591 Railroad						
20-211-29-53591-000-000 Railroad Consortium	25,000.00	.00	25,000.00	25,000.00	.00	100.00
53591 Railroad	25,000.00	.00	25,000.00	25,000.00	.00	100.00
29 Highway	4,196,303.00	.00	3,588,594.78	3,588,594.78	607,708.22	85.52
211 County Roads and Bridges	4,196,303.00	.00	3,588,594.78	3,588,594.78	607,708.22	85.52

For 01/01/20 - 11/30/20

Expenditure Summary Report

FJEXS01A

Periods 01 - 11

Hwy Expense Summary

100

Account No/Description	Adjusted Budget	Y-T-D Encumb	Period Expended	Y-T-D Expended	Available Balance	Percent Used
20 YEAR 3						
701 Highway						
53110 Highway Administration						
20-701-29-53110-110-000	Salaries	159,650.00	.00	122,868.43	122,868.43	36,781.57 76.96
20-701-29-53110-120-000	Wages	722.00	.00	138.03	138.03	583.97 19.12
20-701-29-53110-130-000	Employee Benefits	75,825.00	.00	63,262.22	63,262.22	12,562.78 83.43
20-701-29-53110-213-000	Accounting & Auditing	4,000.00	.00	2,684.50	2,684.50	1,315.50 67.11
20-701-29-53110-225-000	Telephone	3,130.00	.00	2,340.13	2,340.13	789.87 74.76
20-701-29-53110-242-000	Print Management	50.00	.00	191.01	191.01	-141.01 **
20-701-29-53110-310-000	Office Supplies	1,012.00	.00	785.09	785.09	226.91 77.58
20-701-29-53110-311-000	Postage	200.00	.00	197.01	197.01	2.99 98.51
20-701-29-53110-320-000	Publications	1,200.00	.00	.00	.00	1,200.00 .00
20-701-29-53110-324-000	Member Dues	.00	.00	896.00	896.00	-896.00 .00
20-701-29-53110-325-000	Registrations & Conventions	440.00	.00	95.00	95.00	345.00 21.59
20-701-29-53110-336-000	Lodging	492.00	.00	.00	.00	492.00 .00
20-701-29-53110-350-000	Repair & Maintenance	3,314.00	.00	3,324.34	3,324.34	-10.34 100.31
20-701-29-53110-532-000	Building & Grounds Allocation	6,993.00	.00	.00	.00	6,993.00 .00
20-701-29-53110-540-000	Depreciation & Amortization	5,376.00	.00	.00	.00	5,376.00 .00
20-701-29-53110-620-000	Interest	.00	.00	540.30	540.30	-540.30 .00
53110 Highway Administration		262,404.00	.00	197,322.06	197,322.06	65,081.94 75.20
53191 Supervision						
20-701-29-53191-000-000	Supervision	50.00	.00	.00	.00	50.00 .00
20-701-29-53191-110-000	Salaries	70,163.00	.00	56,359.75	56,359.75	13,803.25 80.33
20-701-29-53191-120-000	Wages	312.00	.00	942.98	942.98	-630.98 **
20-701-29-53191-130-000	Employee Benefits	20,014.00	.00	29,470.77	29,470.77	-9,456.77 147.25
20-701-29-53191-225-000	Telephone	620.00	.00	804.79	804.79	-184.79 129.80
20-701-29-53191-350-000	Repair & Maintenance	8,082.00	.00	9,823.75	9,823.75	-1,741.75 121.55
20-701-29-53191-534-000	Machinery Rental	21,958.00	.00	14,415.72	14,415.72	7,542.28 65.65
53191 Supervision		121,199.00	.00	111,817.76	111,817.76	9,381.24 92.26
53192 Radio Expenses						
20-701-29-53192-206-000	Maintenance Contracts	2,055.00	.00	1,198.75	1,198.75	856.25 58.33
20-701-29-53192-225-000	Telephone	1,044.00	.00	675.50	675.50	368.50 64.70
20-701-29-53192-314-000	Small Items of Equipment	500.00	.00	2,537.68	2,537.68	-2,037.68 **
20-701-29-53192-350-000	Repair & Maintenance	100.00	.00	.00	.00	100.00 .00
53192 Radio Expenses		3,699.00	.00	4,411.93	4,411.93	-712.93 119.27
53193 General Public Liability						
20-701-29-53193-509-000	Public Liability	21,880.00	.00	.00	.00	21,880.00 .00
53193 General Public Liability		21,880.00	.00	.00	.00	21,880.00 .00
53210 Employee Taxes and Benefits Cost Pool						
20-701-29-53210-110-000	Salaries	.00	.00	11,460.13	11,460.13	-11,460.13 .00
20-701-29-53210-120-000	Wages	.00	.00	2,647.97	2,647.97	-2,647.97 .00
20-701-29-53210-125-000	Overtime	.00	.00	5,797.85	5,797.85	-5,797.85 .00

For 01/01/20 - 11/30/20

Expenditure Summary Report

FJEXS01A

Periods 01 - 11

Hwy Expense Summary

100

Account No/Description	Adjusted Budget	Y-T-D Encumb	Period Expended	Y-T-D Expended	Available Balance	Percent Used
20 YEAR 3						
701 Highway						
53210 Employee Taxes and Benefits Cost Pool						
20-701-29-53210-131-000 Sick Leave Pay	.00	.00	28,671.22	28,671.22	-28,671.22	.00
20-701-29-53210-132-000 Vacation Pay	.00	.00	65,250.04	65,250.04	-65,250.04	.00
20-701-29-53210-134-000 Holiday Pay	.00	.00	44,193.82	44,193.82	-44,193.82	.00
20-701-29-53210-135-000 Floating Holiday	.00	.00	9,164.52	9,164.52	-9,164.52	.00
20-701-29-53210-137-100 Comp-Accumulated	.00	.00	-16,448.36	-16,448.36	16,448.36	.00
20-701-29-53210-137-300 Comp - Use	.00	.00	12,326.71	12,326.71	-12,326.71	.00
20-701-29-53210-138-000 Other - leave with pay	.00	.00	21,783.76	21,783.76	-21,783.76	.00
20-701-29-53210-151-000 Social Security	.00	.00	88,684.10	88,684.10	-88,684.10	.00
20-701-29-53210-153-000 Ret. Employer Share	.00	.00	81,560.84	81,560.84	-81,560.84	.00
20-701-29-53210-154-000 Health Insurance	.00	.00	305,724.98	305,724.98	-305,724.98	.00
20-701-29-53210-155-000 Life Insurance	.00	.00	3,301.50	3,301.50	-3,301.50	.00
20-701-29-53210-910-000 Employee Taxes & Benefits	.00	.00	-531,225.35	-531,225.35	531,225.35	.00
53210 Employee Taxes and Benefits Cost Pool	.00	.00	132,893.73	132,893.73	-132,893.73	.00
53220 Field Small Tools Cost Pool						
20-701-29-53220-130-120 Employee Benefits	.00	.00	438.29	438.29	-438.29	.00
20-701-29-53220-130-121 Employee Benefit	.00	.00	5,962.94	5,962.94	-5,962.94	.00
20-701-29-53220-362-120 Consumable Small Tools-Field	.00	.00	8,251.08	8,251.08	-8,251.08	.00
20-701-29-53220-362-121 Consumable Small Tools-Safety	.00	.00	27,964.66	27,964.66	-27,964.66	.00
20-701-29-53220-920-000 Small Field Tools	.00	.00	-12,987.05	-12,987.05	12,987.05	.00
53220 Field Small Tools Cost Pool	.00	.00	29,629.92	29,629.92	-29,629.92	.00
53230 Shop Operations Cost Pool						
20-701-29-53230-000-000 Shop Operations	.00	.00	488.87	488.87	-488.87	.00
20-701-29-53230-120-000 Wages	.00	.00	35,486.23	35,486.23	-35,486.23	.00
20-701-29-53230-125-000 Overtime	.00	.00	211.57	211.57	-211.57	.00
20-701-29-53230-130-000 Employee Benefits	.00	.00	18,359.40	18,359.40	-18,359.40	.00
20-701-29-53230-225-000 Telephone	.00	.00	2,792.98	2,792.98	-2,792.98	.00
20-701-29-53230-310-000 Office Supplies	.00	.00	503.72	503.72	-503.72	.00
20-701-29-53230-311-000 Postage	.00	.00	21.17	21.17	-21.17	.00
20-701-29-53230-314-000 Small Items of Equipment	.00	.00	3,348.69	3,348.69	-3,348.69	.00
20-701-29-53230-340-000 Operating Supplies	.00	.00	8,704.28	8,704.28	-8,704.28	.00
20-701-29-53230-345-000 Shop Supplies	.00	.00	7,309.87	7,309.87	-7,309.87	.00
20-701-29-53230-350-000 Repair & Maintenance	.00	.00	4,193.82	4,193.82	-4,193.82	.00
20-701-29-53230-534-000 Machinery Rental	.00	.00	818.10	818.10	-818.10	.00
53230 Shop Operations Cost Pool	.00	.00	82,238.70	82,238.70	-82,238.70	.00
53232 Fuel Handling Cost Pool						
20-701-29-53232-120-000 Wages	.00	.00	105.21	105.21	-105.21	.00
20-701-29-53232-130-000 Employee Benefits	.00	.00	54.11	54.11	-54.11	.00
20-701-29-53232-225-000 Telephone	.00	.00	630.54	630.54	-630.54	.00
20-701-29-53232-350-000 Repair & Maintenance	.00	.00	8,608.40	8,608.40	-8,608.40	.00

For 01/01/20 - 11/30/20

Expenditure Summary Report

FJEXS01A

Periods 01 - 11

Hwy Expense Summary

100

Account No/Description	Adjusted Budget	Y-T-D Encumb	Period Expended	Y-T-D Expended	Available Balance	Percent Used
20 YEAR 3						
701 Highway						
53232 Fuel Handling Cost Pool						
20-701-29-53232-534-000 Machinery Rental	.00	.00	26.58	26.58	-26.58	.00
20-701-29-53232-931-000 Fuel Handling Revenue	.00	.00	-7,859.44	-7,859.44	7,859.44	.00
53232 Fuel Handling Cost Pool	.00	.00	1,565.40	1,565.40	-1,565.40	.00
53240 Machinery Operating Cost Pool						
20-701-29-53240-120-000 Wages	.00	.00	87,599.94	87,599.94	-87,599.94	.00
20-701-29-53240-125-000 Overtime	.00	.00	386.83	386.83	-386.83	.00
20-701-29-53240-130-000 Employee Benefits	.00	.00	45,251.60	45,251.60	-45,251.60	.00
20-701-29-53240-350-000 Repair & Maintenance	.00	.00	362,319.63	362,319.63	-362,319.63	.00
20-701-29-53240-356-000 Work Order Lbr/ILC	.00	.00	-17.19	-17.19	17.19	.00
20-701-29-53240-381-000 Shop Overhead Recovered	.00	.00	-6.10	-6.10	6.10	.00
20-701-29-53240-534-000 Machinery Rental	.00	.00	6,750.19	6,750.19	-6,750.19	.00
20-701-29-53240-940-000 Mach. Operation Rev.	.00	.00	-952,610.30	-952,610.30	952,610.30	.00
53240 Machinery Operating Cost Pool	.00	.00	-450,325.40	-450,325.40	450,325.40	.00
53270 Buildings & Ground Operations Cost Pool						
20-701-29-53270-000-000 Bldgs. & Grounds Operations	.00	.00	44.99	44.99	-44.99	.00
20-701-29-53270-120-000 Wages	.00	.00	35,008.31	35,008.31	-35,008.31	.00
20-701-29-53270-125-000 Overtime	.00	.00	385.56	385.56	-385.56	.00
20-701-29-53270-130-000 Employee Benefits	.00	.00	18,203.11	18,203.11	-18,203.11	.00
20-701-29-53270-220-000 Utilities	.00	.00	18,168.11	18,168.11	-18,168.11	.00
20-701-29-53270-240-000 Contracted Maintenance	.00	.00	8,250.11	8,250.11	-8,250.11	.00
20-701-29-53270-245-000 Building & Ground Improvements	.00	.00	37,009.74	37,009.74	-37,009.74	.00
20-701-29-53270-344-000 Janitorial Supplies	.00	.00	314.78	314.78	-314.78	.00
20-701-29-53270-350-000 Repair & Maintenance	.00	.00	23,503.13	23,503.13	-23,503.13	.00
20-701-29-53270-534-000 Machinery Rental	.00	.00	16,663.94	16,663.94	-16,663.94	.00
53270 Buildings & Ground Operations Cost Pool	.00	.00	157,551.78	157,551.78	-157,551.78	.00
53271 Salt Sheds Cost Pool						
20-701-29-53271-120-000 Wages	.00	.00	70.77	70.77	-70.77	.00
20-701-29-53271-130-000 Employee Benefits	.00	.00	36.40	36.40	-36.40	.00
20-701-29-53271-534-000 Machinery Rental	.00	.00	59.20	59.20	-59.20	.00
53271 Salt Sheds Cost Pool	.00	.00	166.37	166.37	-166.37	.00
53281 Capital Equipment						
20-701-29-53281-810-000 Capital Equipment	298,181.00	.00	318,842.09	318,842.09	-20,661.09	106.93
53281 Capital Equipment	298,181.00	.00	318,842.09	318,842.09	-20,661.09	106.93
53309 County Supervision						
20-701-29-53309-110-000 Salaries	70,993.00	.00	66,276.80	66,276.80	4,716.20	93.36
20-701-29-53309-120-000 Wages	250.00	.00	232.99	232.99	17.01	93.20
20-701-29-53309-130-000 Employee Benefits	37,332.00	.00	34,205.97	34,205.97	3,126.03	91.63
20-701-29-53309-225-000 Telephone	500.00	.00	991.30	991.30	-491.30	198.26
20-701-29-53309-310-000 Office Supplies	75.00	.00	379.93	379.93	-304.93	**

For 01/01/20 - 11/30/20

Expenditure Summary Report

FJEXS01A

Periods 01 - 11

Hwy Expense Summary

100

Account No/Description	Adjusted Budget	Y-T-D Encumb	Period Expended	Y-T-D Expended	Available Balance	Percent Used
20 YEAR 3						
701 Highway						
53309 County Supervision						
20-701-29-53309-350-000	Repair & Maintenance	1,500.00	.00	6,625.99	6,625.99	-5,125.99 **
20-701-29-53309-534-000	Machinery Rentals	14,502.00	.00	13,725.28	13,725.28	776.72 94.64
53309 County Supervision		125,152.00	.00	122,438.26	122,438.26	2,713.74 97.83
53310 General Mtn. C.T.H's						
20-701-29-53310-101-120	Wages	202,533.00	.00	169,728.07	169,728.07	32,804.93 83.80
20-701-29-53310-101-125	Overtime	1,059.00	.00	477.31	477.31	581.69 45.07
20-701-29-53310-101-130	Benefits	107,423.00	.00	87,589.37	87,589.37	19,833.63 81.54
20-701-29-53310-101-350	Repair & Maintenance	5,000.00	.00	9,726.72	9,726.72	-4,726.72 194.53
20-701-29-53310-101-362	Consumable Small Tool	5,000.00	.00	3,610.55	3,610.55	1,389.45 72.21
20-701-29-53310-101-370	Road Supplies	77,578.00	.00	164,509.14	164,509.14	-86,931.14 **
20-701-29-53310-101-534	Equipment/Machinery	133,000.00	.00	211,866.13	211,866.13	-78,866.13 159.30
20-701-29-53310-102-120	Wages	32,958.00	.00	16,874.45	16,874.45	16,083.55 51.20
20-701-29-53310-102-125	Overtime	129.00	.00	57.84	57.84	71.16 44.84
20-701-29-53310-102-130	Benefits	17,481.00	.00	8,708.26	8,708.26	8,772.74 49.82
20-701-29-53310-102-362	Consumable Small Tool	660.00	.00	358.99	358.99	301.01 54.39
20-701-29-53310-102-370	Road Supplies	83,000.00	.00	81,742.55	81,742.55	1,257.45 98.49
20-701-29-53310-102-534	Equipment/Machinery	15,064.00	.00	12,901.19	12,901.19	2,162.81 85.64
20-701-29-53310-103-120	Wages	55,697.00	.00	19,387.19	19,387.19	36,309.81 34.81
20-701-29-53310-103-125	Overtime	3,346.00	.00	.00	.00	3,346.00 .00
20-701-29-53310-103-130	Benefits	29,541.00	.00	2,162.93	2,162.93	27,378.07 7.32
20-701-29-53310-103-362	Consumable Small Tool	1,408.00	.00	89.15	89.15	1,318.85 6.33
20-701-29-53310-103-370	Road Supplies	13,000.00	.00	20,140.80	20,140.80	-7,140.80 154.93
20-701-29-53310-103-534	Equipment/Machinery	15,000.00	.00	8,328.71	8,328.71	6,671.29 55.52
20-701-29-53310-104-120	Wages	50,633.00	.00	48,429.42	48,429.42	2,203.58 95.65
20-701-29-53310-104-125	OT	.00	.00	212.67	212.67	-212.67 .00
20-701-29-53310-104-130	Benefits	26,856.00	.00	32,771.48	32,771.48	-5,915.48 122.03
20-701-29-53310-104-362	Consumable Small Tool	1,228.00	.00	1,350.88	1,350.88	-122.88 110.01
20-701-29-53310-104-370	Road Supplies	50,000.00	.00	35,207.20	35,207.20	14,792.80 70.41
20-701-29-53310-104-534	Equipment/Machinery	30,000.00	.00	64,073.70	64,073.70	-34,073.70 **
53310 General Mtn. C.T.H's		957,594.00	.00	1,000,304.70	1,000,304.70	-42,710.70 104.46
53311 C.T.H's Winter Mtn.						
20-701-29-53311-120-000	Wages	162,027.00	.00	52,894.57	52,894.57	109,132.43 32.65
20-701-29-53311-125-000	Overtime	12,390.00	.00	16,895.96	16,895.96	-4,505.96 136.37
20-701-29-53311-130-000	Employee Benefits	85,938.00	.00	35,893.41	35,893.41	50,044.59 41.77
20-701-29-53311-350-000	Repair & Maintenance	.00	.00	-2,005.82	-2,005.82	2,005.82 .00
20-701-29-53311-362-000	Consumable Small Tools	4,142.00	.00	1,479.59	1,479.59	2,662.41 35.72
20-701-29-53311-370-000	Road supplies	187,000.00	.00	76,578.38	76,578.38	110,421.62 40.95
20-701-29-53311-534-000	Machinery Rental	267,000.00	.00	130,412.55	130,412.55	136,587.45 48.84
53311 C.T.H's Winter Mtn.		718,497.00	.00	312,148.64	312,148.64	406,348.36 43.44

For 01/01/20 - 11/30/20

Expenditure Summary Report

FJEXS01A

Periods 01 - 11

Hwy Expense Summary

100

Account No/Description	Adjusted Budget	Y-T-D Encumb	Period Expended	Y-T-D Expended	Available Balance	Percent Used
20 YEAR 3						
701 Highway						
53312 C.T.H's Bridge Mtn & Insp CTH's						
20-701-29-53312-000-000 Bridge Maintenance and Inspection -CTH's	6,500.00	.00	390.00	390.00	6,110.00	6.00
20-701-29-53312-120-000 Wages	4,051.00	.00	114.32	114.32	3,936.68	2.82
20-701-29-53312-130-000 Employee Benefits	2,148.00	.00	58.79	58.79	2,089.21	2.74
20-701-29-53312-362-000 Consumable Small Tools	98.00	.00	2.42	2.42	95.58	2.47
20-701-29-53312-534-000 Machinery Rental	100.00	.00	115.76	115.76	-15.76	115.76
53312 C.T.H's Bridge Mtn & Insp CTH's	12,897.00	.00	681.29	681.29	12,215.71	5.28
53313 Reconstruction						
20-701-29-53313-000-000 Reconstruction-CTH's	1,982,940.00	.00	1,747,112.08	1,747,112.08	235,827.92	88.11
53313 Reconstruction	1,982,940.00	.00	1,747,112.08	1,747,112.08	235,827.92	88.11
53315 Chip Seal Coat						
20-701-29-53315-000-000 Chip Seal Coat	230,105.00	.00	212,572.55	212,572.55	17,532.45	92.38
53315 Chip Seal Coat	230,105.00	.00	212,572.55	212,572.55	17,532.45	92.38
53317 Bridge Construction - CTH's						
20-701-29-53317-000-000 Bridge Construction - CTH's	83,390.00	.00	13,702.20	13,702.20	69,687.80	16.43
53317 Bridge Construction - CTH's	83,390.00	.00	13,702.20	13,702.20	69,687.80	16.43
53321 Routine Maintenance						
20-701-29-53321-000-000 Routine Maintenance - State	14,402.00	.00	12,773.50	12,773.50	1,628.50	88.69
20-701-29-53321-120-000 Wages	189,875.00	.00	82,753.11	82,753.11	107,121.89	43.58
20-701-29-53321-125-000 Overtime	6,331.00	.00	7,489.44	7,489.44	-1,158.44	118.30
20-701-29-53321-130-000 Employee Benefits	100,709.00	.00	46,411.52	46,411.52	54,297.48	46.08
20-701-29-53321-350-000 Repair & Maintenance	.00	.00	2,981.20	2,981.20	-2,981.20	.00
20-701-29-53321-362-000 Consumable Small Tools	4,713.00	.00	1,913.17	1,913.17	2,799.83	40.59
20-701-29-53321-370-000 Road Supplies	10,000.00	.00	15,802.45	15,802.45	-5,802.45	158.02
20-701-29-53321-534-000 Machinery Repair	154,000.00	.00	109,779.66	109,779.66	44,220.34	71.29
53321 Routine Maintenance	480,030.00	.00	279,904.05	279,904.05	200,125.95	58.31
53322 State Maintenance - PBM						
20-701-29-53322-000-000 State Maintenance - PBM	.00	.00	56,157.59	56,157.59	-56,157.59	.00
53322 State Maintenance - PBM	.00	.00	56,157.59	56,157.59	-56,157.59	.00
53333 Cities, Towns, Villages						
20-701-29-53333-120-000 Wages	68,017.00	.00	45,455.07	45,455.07	22,561.93	66.83
20-701-29-53333-125-000 Overtime	2,829.00	.00	5,098.71	5,098.71	-2,269.71	180.23
20-701-29-53333-130-000 Employee Benefits	36,076.00	.00	25,999.83	25,999.83	10,076.17	72.07
20-701-29-53333-350-000 Repair & Maintenance	47,057.00	.00	27,050.24	27,050.24	20,006.76	57.48
20-701-29-53333-362-000 Consumable Small Tools	1,698.00	.00	1,071.75	1,071.75	626.25	63.12
20-701-29-53333-370-000 Road Supplies	205,676.00	.00	173,788.58	173,788.58	31,887.42	84.50
20-701-29-53333-534-000 Machinery Rental	81,480.00	.00	105,736.41	105,736.41	-24,256.41	129.77
53333 Cities, Towns, Villages	442,833.00	.00	384,200.59	384,200.59	58,632.41	86.76
53334 Interdepartment Charges						

For 01/01/20 - 11/30/20

Expenditure Summary Report

FJEXS01A

Periods 01 - 11

Hwy Expense Summary

100

<u>Account No/Description</u>	<u>Adjusted Budget</u>	<u>Y-T-D Encumb</u>	<u>Period Expended</u>	<u>Y-T-D Expended</u>	<u>Available Balance</u>	<u>Percent Used</u>
20 YEAR 3						
701 Highway						
53334 Interdepartment Charges						
20-701-29-53334-000-000 Interdepartmental Charges	85,577.00	.00	72,190.27	72,190.27	13,386.73	84.36
53334 Interdepartment Charges	85,577.00	.00	72,190.27	72,190.27	13,386.73	84.36
29 Highway	5,826,378.00	.00	4,787,526.56	4,787,526.56	1,038,851.44	82.17
701 Highway	5,826,378.00	.00	4,787,526.56	4,787,526.56	1,038,851.44	82.17
20 YEAR 3	10,022,681.00	.00	8,376,121.34	8,376,121.34	1,646,559.66	83.57

GREEN LAKE COUNTY

For 01/01/20 - 11/30/20

Revenue Summary Report

FJRES01A

Periods 01 - 11

Hwy Revenue Summary

100-R

<u>Account No/Description</u>	<u>Budget Amount</u>	<u>Period Amount</u>	<u>Y-T-D Amount</u>	<u>Balance</u>	<u>Percent Received</u>
20 YEAR 3					
211 County Roads and Bridges					
29 Highway					
20-211-29-41110-000-000 General Property Taxes	2,682,751.00	2,682,751.00	2,682,751.00	.00	100.00
20-211-29-43531-000-000 CTH's Revenue from State	885,670.00	887,690.28	887,690.28	-2,020.28	100.23
20-211-29-43600-000-000 APPLIED FUNDS	126,714.00	.00	.00	126,714.00	.00
20-211-29-49210-000-000 Transfer from Other Funds	754,596.00	.00	.00	754,596.00	.00
29 Highway	4,449,731.00	3,570,441.28	3,570,441.28	879,289.72	80.24
211 County Roads and Bridges	4,449,731.00	3,570,441.28	3,570,441.28	879,289.72	80.24

GREEN LAKE COUNTY

For 01/01/20 - 11/30/20

Revenue Summary Report

FJRES01A

Periods 01 - 11

Hwy Revenue Summary

100-R

<u>Account No/Description</u>	<u>Budget Amount</u>	<u>Period Amount</u>	<u>Y-T-D Amount</u>	<u>Balance</u>	<u>Percent Received</u>
20 YEAR 3					
701 Highway					
29 Highway					
20-701-29-44201-000-000 Off Pavement Utility Fee	2,200.00	1,850.00	1,850.00	350.00	84.09
20-701-29-44205-000-000 Driveway/Variance	1,500.00	2,200.00	2,200.00	-700.00	146.67
20-701-29-44260-000-000 Oversize/Overweight Permits	1,000.00	725.00	725.00	275.00	72.50
20-701-29-44261-000-000 Multi-Trip Permits	1,800.00	1,000.00	1,000.00	800.00	55.56
20-701-29-47230-000-000 State PBM	.00	75,320.50	75,320.50	-75,320.50	.00
20-701-29-47231-000-000 Routine Maintenance	480,030.00	237,352.35	237,352.35	242,677.65	49.45
20-701-29-47239-000-000 Other - Sup. R&R-Radio-GPL etc	101,702.00	119,687.47	119,687.47	-17,985.47	117.68
20-701-29-47292-000-000 State - Admin	26,310.00	12,156.77	12,156.77	14,153.23	46.21
20-701-29-47300-000-000 Cities, Villages, Towns, Cty.	442,833.00	328,119.29	328,119.29	114,713.71	74.10
20-701-29-47392-000-000 Local - Admin Charges	20,193.00	15,525.82	15,525.82	4,667.18	76.89
20-701-29-47410-000-000 Interdepartmental Invoicing	85,577.00	67,826.79	67,826.79	17,750.21	79.26
20-701-29-47430-000-000 Charges for Services - CTH's	4,110,575.00	3,408,197.36	3,408,197.36	702,377.64	82.91
20-701-29-47492-000-000 CTH's - Admin	187,442.00	155,397.40	155,397.40	32,044.60	82.90
20-701-29-48000-000-000 Miscellaneous Revenues	96,536.00	41,094.56	41,094.56	55,441.44	42.57
20-701-29-48330-000-000 Sale of Materials & Supplies	1,000.00	122.50	122.50	877.50	12.25
20-701-29-48400-000-000 Insurance Recoveries	2,000.00	3,131.73	3,131.73	-1,131.73	156.59
20-701-29-48440-000-000 Revenue from Cost of Sales	24,000.00	9,905.27	9,905.27	14,094.73	41.27
20-701-29-49320-000-000 Applied Funds	237,241.00	.00	.00	237,241.00	.00
29 Highway	5,821,939.00	4,479,612.81	4,479,612.81	1,342,326.19	76.94
701 Highway	5,821,939.00	4,479,612.81	4,479,612.81	1,342,326.19	76.94
20 YEAR 3	10,271,670.00	8,050,054.09	8,050,054.09	2,221,615.91	78.37



GREEN LAKE COUNTY HIGHWAY COMMISSION

Barry Mashuda
Highway Commissioner

Office: 920-294-4060
Fax: 920-294-4066
Email: bmashuda@co.green-lake.wi.us

Commissioner's Report Highway Committee Meeting January 13, 2021

Completed Work

- All plowing equipment installed and ready for winter
- Snow Fence Up
- Ditching jobs done for the season – State, County, and Town
- Pump chamber in the City of Princeton installed
- Received road salt – sheds close to full
- Crack sealing
- Brushing for the Town of Seneca
- Stock piled gravel for 2021 road project
- Replaced failing cross culverts
- Signed the State Routine Maintenance Agreement \$556,000

Current Work

- Brush and tree work / trimming
- Crack seal (weather permitting)
- Maintenance and repair on mowers and summer equipment
- Patching
- Snow removal
- Planning 2021 projects