



GREEN LAKE COUNTY

571 County Road A, Green Lake, WI 54941

Original Post Date: 06/02/16

Revised Post Date 06/07/16

The following documents are included in the packet for the Highway Committee on 06/08/16:

- 1) **Amended** Agenda
- 2) Draft minutes from the May 11, 2016 meeting
- 3) **Vouchers**
- 4) DOT Request for Services – DMA Seal Coats
- 5) **Financials**
- 6) Resolution Relating to Transportation Funding for Local and state Roads
- 7) **Bridge Inspections**
- 8) 2015 PASER
- 9) Tire Costs
- 10) Adopt-A-Highway, CTH AW, County Line Lutheran Church
- 11) **STP Rural SMA, CTH D, City of Princeton**
- 12) **Women’s Leadership Conference, July 25, 2016**
- 13) **Commissioner’s Report**



GREEN LAKE COUNTY HIGHWAY COMMISSIONER

Amy M. Brooks, P.E.
Highway Commissioner

Office: 920-294-4060
FAX: 920-294-4066

Meeting Notice

Date: June 08, 2016 Time: 5:30 PM
Green Lake County Government Center, Training Room
571 County Road A, Green Lake, WI

*AMENDED AGENDA

Committee Members

Paul Schwandt
Ben Moderow
Vicki Bernhagen
Rich Slate

Nick Toney (Alternate)

Becky Pence,
Secretary

Notice is hereby given that a majority of the Green Lake County Board of Supervisors may be present at this meeting to gather information about a subject over which they have decision making responsibility. This constitutes a meeting of the County Board pursuant to the Badke Decision and must be noticed as such although the County Board will not take any formal action at this meeting.

- 1) Call to Order
- 2) Certification of Open Meeting Law
- 3) Pledge of Allegiance
- 4) Approval of Agenda
- 5) Approval of Minutes 05/11/16
- 6) Correspondence
- 7) Public Comment (3 minute limit)
- 8) Appearances
 - Jewell Associates
 - Lauree Renaud, Green Lake Greenways
- 9) CTH K Bike Signage
- 10) Monthly Vouchers
- 11) DOT Request for Services – DMA, STH 44 Chip Seal
- 12) Financial Reports
- 13) Miscellaneous Non-Inventory Items
- 14) Near Miss Report
- 15) Resolution Relating to Transportation Funding for Local and State Roads
- 16) ***Bridge Inspections-Review Request for Proposal & LTE Costs**
- 17) 2015 PASER Update
- 18) Highway Charges for Services
- 19) Tire Costs
- 20) Adopt-A-Highway, County Line Lutheran Church, CTH AW
- 21) ~~*Jurisdictional Transfer, CTH Y, Town of Princeton~~
- 22) ***STP Rural SMA, CTH D, City of Princeton**
- 23) ***Women’s Leadership Conference, July 25, 2016**
- 24) ***Road Review, CTH S**
- 25) Railroad Consortium
- 26) Committee Discussion
 - Commissioner’s Report
 - Next Meeting Date 07/13/16
 - Future Items for Action and Discussion
Capital Outlay Goals, Office Relocation, Road Funding Options
- 27) ***Consider motion to convene into closed session per Wis. Stat. §19.85(1)(c) to consider employment compensation or performance evaluation data of specific public employees over which the governmental body has jurisdiction or exercises responsibility. This closes session is regarding employee evaluations.**
- 28) ***Reconvene to Open Session to take action, if appropriate, on matters discussed in Closed Session.**
- 29) Adjourn

*Kindly arrange to be present. If unable to do so, please notify our Office.
Sincerely, Becky Pence, Secretary Highway Committee*

Meeting area is accessible to the physically disabled. Anyone planning to attend who needs visual or audio assistance should contact (920) 294-4060 no later than noon on the day preceding the meeting.

May 11, 2016

The regular meeting of the Highway Committee was called to order by Chair Paul Schwandt at 5:30 PM on Wednesday, May 11, 2016. The requirements of the Open Meeting Law were certified as being met.

Present: Paul Schwandt Ben Moderow
Vicki Bernhagen Rich Slate

Absent:

Others Present: Amy Brooks, Highway Commissioner, Becky Pence, Administrative Assistant
Duane Prachel, Patrol Superintendent, Aaron Wagner, Patrol Superintendent
Harley Reabe, Supervisor District 11, Dawn Klockow, Corporation Counsel
Roger Priebe, Retiree Highway Department, Robert Lyon, Supervisor District 19
Thomas Boguszewski & Ryan Barz, AECOM
Dr. Thomas Kloosterboer, Resident Town of Brooklyn

Pledge of Allegiance

The Pledge of Allegiance was recited.

Agenda

Motion/second (Slate/Bernhagen) to approve the Agenda. Motion Carried.

Approval of Minutes

Motion/Second (Bernhagen/Slate) to approve the minutes 4/13/16 Motion Carried.

Correspondence None

Public Comment

Thomas Boguszewski of AECOM, consulting engineers explained there have been DNR delays with working on CTH I bridge. Also, they are interested in the upcoming CTH D project from STH 23 to CTH YY. Ryan Barz, AECOM from Stevens Point Office spoke about their background and credentials.

Dr. Thomas Kloosterboer, W2684 Oakwood Beach Road, Green Lake, has safety concerns on CTH K from Terrace to Lakeview Road when riding bike. He would like to see warning signs, or speed limit signs installed. This will be on the Agenda next month.

Appearances None

Employee Recognition

Committee Chairman, Schwandt presented a plaque to Roger Priebe for his dedication and services at the Highway Department. Roger retired with over 20 years of service.

Monthly Vouchers

Motion/Second (Moderow/Bernhagen) to approve the May vouchers for \$114,478.91. Motion Carried.

DOT Request for Services

Motion/second (Slate/Moderow) to approve the DOT Discretionary Maintenance Agreement for an overlay on STH 44 from CTH A to CTH A in the amount of \$115,000.

Financial Reports

Financial were reviewed.

Resolution to Earmark Net Profit for future Equipment Purchases

Motion/second (Bernhagen/Slate) to approve Resolution Relating to Creating a "Restricted Cash" account for

Machinery Purchases, and have the Commissioner present to the county board at the appropriate time. Motion Carried.

Auction Sale of Forklift

Motion/Second (Moderow/Slate) to approve selling the Forklift, (Unit 100) for \$550.00. Motion Carried.

Miscellaneous Non-Inventory Items

Discussion held on the need to dispose of pallets, paint totes, and old sign posts. Guidance is needed on how to dispose of these items. Bernhagen suggested bringing back to committee next month after checking on the County's Policy on disposing of property.

Request for Proposal – Bridge Inspections

A request was made to subcontract bridge inspections. Discussion held on having another employee certified for future inspections. Commissioner to send out Request for Proposals, and to check on costs for hiring a Limited Term Employee for 2016 Bridge Inspections, and to bring back to Committee next month.

Use of Public Right of Way – Manure Hoses

A no fee utility permit is requested for temporarily pumping manure through hoses along the right of way on county trunk roads.

Motion/second (Slate/Moderow) to approve a no fee utility permit for manure. Motion Carried.

Cost of Doing Interdepartmental Work

Various charges were explained, along with why Highway charges incidental labor rates, small tool rates, administration fee, and charges for equipment usage. At year end, these costs need to be accounted for in the Highway budget if not charged out for usage when providing a service to various departments or municipalities.

Rich Slate was excused at 6:45 pm.

An explanation of "County Highway Department Charges for Services" was included in the committee packet and was also discussed. More discussion will follow at next committee meeting.

Tire Costs

This will be brought back to committee meeting next month.

Sign Policy

Motion/second (Bernhagen/Moderow) to approve the Marking, Signing and Safety Policy for Green Lake County's County Truck System. Motion Carried.

Railroad Consortium None

Committee Discussion

Committee reviewed Commissioner's Report.

Future Meeting Date: June 08, 2016.

Future Items for action and discussion: Capital Outlay Goals, Office Relocation, Road Funding Options, CTH K & Dodge Park Signage, Non-Inventory Items, Bridge Inspections, Highway Charges for Services, and Tire Costs.

Adjournment 7:25 pm

Submitted by,

Becky Pence,
Secretary Highway Committee

**June 08, 2016
Highway Committee
Claims for
Approval
\$362361.40**

VENDOR	AMOUNT	ACCOUNT	ACCOUNT #	DESCRIPTION	DESCRIPTION
ALLIANT ENERGY	\$728.17	53270 - 220		Utilities	5721140000 Hwy City Shop
ALLIANT ENERGY	\$58.35	53270 - 220		Utilities	1341920000 Hwy Shop 1
ARING EQUIPMENT EXCHANGE	\$3,000.00	53281 - 810		Capital Equipment	Power Seat for #221
ARING EQUIPMENT EXCHANGE	\$245,000.00	53281 - 810		Capital Equipment	2016 Chip Spreader #221
AUTOMOTIVE SUPPLY CO	\$53.76	53230 - 345		Shop Supplies	Motor Oil & Radiator Coolant
AUTOMOTIVE SUPPLY CO	\$131.75	53220 - 362		Consumable Small Tools	M18 Driver
AUTOMOTIVE SUPPLY CO	\$45.00	53230 - 340		Operating Supplies	Core
AUTOMOTIVE SUPPLY CO	\$189.10	16123 - 000		Batteries	Battery
AUTOMOTIVE SUPPLY CO	(\$22.50)	53230 - 340		Operating Supplies	Credit - Core
AUTOMOTIVE SUPPLY CO	\$297.36	16108 - 000		Non-inventory Parts	Disc Brake Caliper,Drum/Rotor
AUTOMOTIVE SUPPLY CO	\$120.00	53230 - 340		Operating Supplies	Core
BALLWEG IMPLEMENT CO INC	\$271.11	16108 - 000		Non-inventory Parts	#310 Gasket/Seal/Radiator/Hose
BIGNELLS POWERSPORTS	\$58.54	16121 - 000		Repair Parts & Accessories	Filter & Belt
BIGNELLS POWERSPORTS	\$43.72	16108 - 000		Non-inventory Parts	Throttle assy, ball joint #194
BLACK WOLF HYDRAULICS LLC	\$258.45	16108 - 000		Non-inventory Parts	mid section valve #8
BROOKS AMY	\$82.00	53110 - 336		Lodging	Hotel Stay - Great Wolf Lodge
CAREW CONCRETE & SUPPLY CO	\$806.05	53333 - 370		Road Supplies	gravel 3/4 T Kingston
CAREW CONCRETE & SUPPLY CO	\$4,717.32	53315 - 000		Chip Seal Coat	gravel 3/4 CTH B & H
CAREW CONCRETE & SUPPLY CO	\$151.57	53315 - 000		Chip Seal Coat	gravel 3/4 CTH B
CATCO PARTS SERVICE	\$449.99	16108 - 000		Non-inventory Parts	landing gear set #210
CENTURYLINK	\$201.82	53110 - 225		Telephone	301582487 Hwy Office
CENTURYLINK	\$47.44	53309 - 225		Telephone	301582487 Hwy
CENTURYLINK	\$90.22	53230 - 225		Telephone	301582487 Hwy Shop
CENTURYLINK	\$78.72	53232 - 225		Telephone	301582487 Fuel
CHARTER COMMUNICATIONS	\$68.20	53321 - 000		Routine Maintenance - State	8245110290013171 06/07-07/06
CITY OF BERLIN	\$201.92	53310 - 101		Rented Equipment	rental roller & trailer Surf Maint
CITY OF BERLIN	\$33.66	53315 - 000		Chip Seal Coat	rental roller & trailer CTH B chip seal
CULLIGAN WATER CONDITIONING	\$17.00	53110 - 310		Office Supplies	water
CUMMINS NPOWER LLC	\$130.37	16108 - 000		Non-inventory Parts	Water Pump #500
ENERGY SOLUTION PARTNERS LLC	\$12,946.86	16132 - 000		Diesel Fuel	May usage
ENERGY SOLUTION PARTNERS LLC	\$8,657.54	16131 - 000		Gasoline	May usage
FABCO EQUIPMENT INC	\$1,551.65	16108 - 000		Non-inventory Parts	Sensor/SealORing/Gasket/Pump
FABCO EQUIPMENT INC	\$751.77	53230 - 340		Operating Supplies	Core - Pump
FABCO EQUIPMENT INC	(\$751.77)	53230 - 340		Operating Supplies	Credit - Core
FASTENAL COMPANY	\$124.32	53230 - 345		Shop Supplies	Noalox Tube
FOND DU LAC CULVERT & SUPPLY	\$2,373.60	16112 - 000		Culverts	culverts
FOND DU LAC TRUCK SALES	\$37.88	16121 - 000		Repair Parts & Accessories	CB Antenna 3'
FOND DU LAC TRUCK SALES	\$100.00	16108 - 000		Non-inventory Parts	CB radio #003
GRAYS INC	\$1,347.25	16121 - 000		Repair Parts & Accessories	Blades, Curb Shoes
GREEN LAKE POSTMASTER	\$198.00	53110 - 311		Postage	2016 Box #159 Fee
HENRY G MEIGS LLC	\$360.00	53315 - 000		Chip Seal Coat	markers
HUMPHREY SERVICE PARTS INC	\$118.50	16121 - 000		Repair Parts & Accessories	Brake Chamber
HUMPHREY SERVICE PARTS INC	\$29.64	16121 - 000		Repair Parts & Accessories	Clamp
HUMPHREY SERVICE PARTS INC	\$399.50	16121 - 000		Repair Parts & Accessories	Brake Drums, Shoes, Chamber
HUMPHREY SERVICE PARTS INC	\$220.00	16121 - 000		Repair Parts & Accessories	Slack Adjuster
HUMPHREY SERVICE PARTS INC	\$288.93	16121 - 000		Repair Parts & Accessories	Rad Cap, Brake Chamber
KOPPLIN & KINAS CO INC	\$686.33	53310 - 101		Road Supplies	3/4 gravel
KOPPLIN & KINAS CO INC	\$1,121.14	53315 - 000		Chip Seal Coat	3/4 gravel
KOPPLIN & KINAS CO INC	\$1,962.06	53333 - 370		Road Supplies	3/4 gravel
KOPPLIN & KINAS CO INC	\$10,265.39	53321 - 370		Road Supplies	Gravel
KOPPLIN & KINAS CO INC	\$2,692.70	53315 - 000		Chip Seal Coat	Recycle
KOPPLIN & KINAS CO INC	\$2,104.11	16113 - 000		Gravel, Sand Stone etc.	Chips
KOPPLIN & KINAS CO INC	\$2,819.24	53310 - 101		Road Supplies	Recycle, gravel
MENARDS	\$165.59	53220 - 362		Consumable Small Tools-Field	wrench, crescent, pliers
MGD INDUSTRIAL CORP	\$61.74	16121 - 000		Repair Parts & Accessories	Butt Conn.
MGD INDUSTRIAL CORP	\$196.56	53230 - 345		Shop Supplies	Teflon Lube Spray
MID AMERICAN RESEARCH CHEMICAL	\$362.00	53230 - 345		Shop Supplies	Degreaser
MILLER-BRADFORD & RISBERG INC	\$19.05	16108 - 000		Non-inventory Parts	Thimble-Tap #586
MODERN RENTALS	\$180.20	53321 - 370		Road Supplies	Tiller Rental
MODERN RENTALS	\$59.85	16121 - 000		Repair Parts & Accessories	Blade 21"
MODERN RENTALS	(\$49.85)	53230 - 340		Operating Supplies	Return Blade
NAPA AUTO PARTS	\$36.55	16121 - 000		Repair Parts & Accessories	Antenna

June 08, 2016
Highway Committee
Claims for
Approval
\$362361.40

VENDOR	AMOUNT	ACCOUNT	ACCOUNT #	DESCRIPTION	DESCRIPTION
NORTHEAST ASPHALT INC	\$508.93	53310 - 101		Road Supplies	Asphalt
NORTHEAST ASPHALT INC	\$169.03	53315 - 000		Chip Seal Coat	Asphalt
PACKER CITY INTERNATIONAL TRUCKS INC	\$630.23	16121 - 000		Repair Parts & Accessories	Nuts/Seals/Gaskets/Filters/Hose/Tubes
PACKER CITY INTERNATIONAL TRUCKS INC	\$67.95	16121 - 000		Repair Parts & Accessories	Air Filters & Hose
PACKER CITY INTERNATIONAL TRUCKS INC	\$220.00	16121 - 000		Repair Parts & Accessories	Adjuster Slack
PACKER CITY INTERNATIONAL TRUCKS INC	\$90.48	16121 - 000		Repair Parts & Accessories	Filters, hose
PACKER CITY INTERNATIONAL TRUCKS INC	(\$637.75)	53230 - 340		Operating Supplies	Credit air cooler, inj core #45
PACKER CITY INTERNATIONAL TRUCKS INC	(\$632.50)	53230 - 340		Operating Supplies	Credit Turbe #44 X10302413401
PACKER CITY INTERNATIONAL TRUCKS INC	\$271.11	16108 - 000		Non-inventory Parts	Bracket, solenoids #51
PACKER CITY INTERNATIONAL TRUCKS INC	\$618.86	16121 - 000		Repair Parts & Accessories	Filters, hose
PRECISION SEALCOATING INC	\$827.55	53321 - 000		Routine Maintenance - State	Catch basin cleaning STH 44
SHARE CORP	\$279.18	53230 - 345		Shop Supplies	car wash, wax
SHERWIN INDUSTRIES INC	\$165.15	16121 - 000		Repair Parts & Accessories	LED Lights
SHERWIN INDUSTRIES INC	\$236.40	16108 - 000		Non-inventory Parts	Coupler, LInk, Sprocket #576
SHERWIN INDUSTRIES INC	\$443.34	16108 - 000		Non-inventory Parts	hyd motor #576
SHERWIN INDUSTRIES INC	\$1,822.22	16108 - 000		Non-inventory Parts	spacers,pins,bearing,cutter #577
SHERWIN WILLIAMS CO	\$22,077.00	53310 - 102		Road Supplies	centerlining paint
SHERWIN WILLIAMS CO	\$22,143.00	53310 - 102		Road Supplies	centerlining paint
TRUCK EQUIPMENT INC	\$153.16	16108 - 000		Non-inventory Parts	Shovel Holder #221
TRUCK EQUIPMENT INC	\$129.98	16108 - 000		Non-inventory Parts	Lighting #15
US CELLULAR	\$62.24	53191 - 225		Telephone	206660275 Hwy Cell/Ipad
US CELLULAR	\$22.50	53230 - 225		Telephone	206660275 Hwy Cell/Ipad
US CELLULAR	\$115.05	53192 - 225		Telephone	206660275 Hwy Cell/Ipad
US CELLULAR	\$22.50	53309 - 225		Telephone	206660275 Hwy Cell/Ipad
US LUBRICANTS	\$476.00	16141 - 000		Lubricating Oils	Grease, Hyd oil
US LUBRICANTS	\$1,176.12	16141 - 000		Lubricating Oils	15W40
WASTE MANAGEMENT OF WI-MN	\$112.74	53270 - 240		Contracted Maintenance	Recycle - Shop 1
WASTE MANAGEMENT OF WI-MN	\$370.25	53321 - 000		Routine Maintenance - State	Trash - Shop 2
WASTE MANAGEMENT OF WI-MN	\$367.92	53270 - 240		Contracted Maintenance	Trash - Shop 1
WASTE MANAGEMENT OF WI-MN	\$57.78	53321 - 000		Routine Maintenance - State	Recycle - Shop 2
WE ENERGIES	\$44.60	53270 - 220		Utilities	2058-785-310 Hwy Shop 2 Heat
WEEKS THOMAS	\$250.00	53310 - 101		Repair & Maintenance	deer pick up April
WELD SPECIALTY CORPORATION	\$11.85	53230 - 345		Shop Supplies	Oxygen
WESTERN CULVERT AND SUPPLY INC	\$479.00	53313 - 275		CTH M (County Line-CTH X)	Guardrail
WIEDENBECK INC	\$264.11	53230 - 340		Operating Supplies	Steel
ZOOM INFORMATION SYSTEMS	\$200.00	53321 - 000		Routine Maintenance - State	May AVL/GPS
	\$362,361.40				

\$2,768.11	53333	Cities, Towns
11,969.37	53321	STATE
177.29	53191	STATE
<u>347,446.63</u>		COUNTY
<u>\$362,361.40</u>		TOTAL

We the undersigned members of the Highway Committee, Green Lake County Board of Supervisors, have this day reviewed the above listed vouchers for payment and approve said payments as indicated.

Paul Schwandt

Vicki Bernhagen

Ben Moderow

Rich Slate

DISCRETIONARY MAINTENANCE AGREEMENT

GREEN LAKE COUNTY

CALENDAR YEAR 2016

The State of Wisconsin Department of Transportation (hereafter called the Department) authorizes the maintenance project herein described, and the above designated County, represented by its County Highway Committee and Highway Commissioner, agrees to perform such operations and furnish such materials as listed below. It is understood that the maintenance services authorized under this agreement shall be accomplished in compliance with state and federal law and under the general direction of the Department. Payment for services provided under this agreement shall be made to the County based on actual labor, including fringe benefit costs, machinery allowances as specified in the current MAINTENANCE MANUAL, CHAPTER 2, and material purchases authorized by the Department. Such payment shall be made upon presentation of accounts itemized and verified in accordance with regulations of the Department.

In connection with the services provided under this agreement, the County agrees not to discriminate against any employee or applicant for employment because of sex, age, race, religion, color, handicap, physical condition, developmental disability as defined in s.51.05(5), sexual orientation, or national origin. This provision shall include, but not be limited to the following: employment upgrading, demotion or transfer; recruitment or recruitment advertising; layoff or termination; rates of pay or other forms of compensation; and selection for training, including apprenticeship. The County further agrees to post in a conspicuous place, available for employees and applicants for employment, notices setting forth these provisions.

The disclaimer language as contained in the State Highway Maintenance Manual is included in this agreement by reference. The County is obligated to provide services under this agreement only to the extent it receives Department funding for the same. The Department recognizes that the County does not warrant that maintenance funds provided by the Department are sufficient to provide for a uniform level of service or standard of state highway maintenance applicable to all situations. Certain factors, including but not limited to, weather restrictions and funding or labor shortages, may make universal, year-round compliance with the goals expressed within this manual impossible to achieve.

PROJECT ID	COUNTY ACCT. NO.	DESCRIPTION	AMOUNT
0024-63-01	53321	DHN SEAL COATS	NON INTERSTATE \$ 115,000
		ESTIMATED COUNTY COSTS	\$ 115,000

DATE: _____

ESTIMATED AMOUNT BUDGETED	
COUNTY LABOR	\$ 30,000
COUNTY EQUIPMENT	\$ 12,500
COUNTY MATERIALS	\$ 68,000
ADMINISTRATIVE SUPPORT	\$ 4,500

County Highway Commissioner

TOTAL COUNTY COST \$ 115,000

Approved for DEPARTMENT OF TRANSPORTATION

DTSD Regional Director Date

County Highway Committee

Director, Bureau of Highway Maintenance Date

DISCRETION HIGHWAY MAINTENANCE AGREEMENT

GREEN LAKE COUNTY
CALENDAR YEAR 2016

PROJECT ID: 0024-63-01 (NON INTERSTATE)

SEAL COAT (NON-INTERSTATE)

THIS SPECIAL ROADWAY MAINTENANCE PROJECT CONSISTS OF A SEAL COAT OF
STH 44 FROM MARQUETTE RD. - STH 73 IN GREEN LAKE COUNTY. ALL WORK WILL
BE COMPLETED AS DIRECTED BY THE DEPARTMENT.

HIGHWAY	LOCATION	LENGTH	UNIT PRICE	QUANTITY
STH -044-	MARQUETTE ROAD - STH 73	2.70	/	

STATE FURNISHED MATERIALS

Quantity	Measure	Description	
400.00	TON	SEAL COAT AGGREGATE	\$ 68,000
13500.00	GALLON	BITUMINOUS, HFRS-2 APPLIED, ROUTINE	
1.00	LUMP SUM	UNLISTED HIGHWAY MATERIALS	

COUNTY LABOR \$ 30,000

SALARY \$ 18,000

FRINGE \$ 12,000

OVERTIME

COUNTY EQUIPMENT \$ 12,500

ADMINISTRATIVE SUPPORT \$ 4,500

TOTAL PROJECT COSTS \$ 115,000
=====

CHARGES FOR THIS WORK SHALL BE SUMMARIZED BY THE FOLLOWING ACTIVITY CODES:

- | | |
|-------------------------------|---|
| 1 SPOT REPAIR/POT HOLE REPAIR | 3 SEALCOATING |
| 32 TRAFFIC CONTROL | 90 PAVEMENT MARKING (NON ROUTINE WORK ONLY) |

DISCRETIONARY MAINTENANCE AGREEMENT

COUNTY FURNISHED MATERIALS

GREEN LAKE COUNTY

Project Id	Description	Quantity	Unit	Estimated	
				Unit Price	Budget Amount
0024-63-01	SEAL COAT AGGREGATE	400.000	TON	\$ 20.0000	\$ 8,000.0000
0024-63-01	BITUMINOUS, HFRS-2 APPLIED, ROUTINE	13,500.000	GALLON	\$ 3.5000	\$ 47,250.0000
0024-63-01	UNLISTED HIGHWAY MATERIALS	1.000	LUMP SUM	\$12,750.0000	\$ 12,750.0000

1/1/2016 Thru 5/31/2016 (5 MONTHS EST DPRN) (ALL WO TYPES) (ALL WO KINDS)

<u>Equipment</u>	<u>Revenue</u>	<u>Total-cost</u>	<u>Fuel</u>	<u>Lube</u>	<u>Labor</u>	<u>Fringe</u>	<u>Overhead</u>	<u>Part</u>	<u>Tire/batt</u>	<u>Sundry</u>	<u>Dprn-mnthly</u>	<u>Units</u>
586	1,989.26	4,078.59	64.67	91.07	1,232.58	750.76	835.51	130.96	973.04	0.00	0.00	45.50
651	410.40	0.00	0.00	0.00	0.00	0.00	0.00	0.00	0.00	0.00	0.00	18.00
655	22.80	0.00	0.00	0.00	0.00	0.00	0.00	0.00	0.00	0.00	0.00	1.00
657	1,048.80	436.36	0.00	0.00	190.80	116.22	129.34	0.00	0.00	0.00	0.00	46.00
720	1,408.19	86.00	0.00	0.00	23.85	14.53	16.17	31.45	0.00	0.00	0.00	128.25
722	1,065.06	1,301.57	0.00	0.00	143.26	87.26	97.11	973.94	0.00	0.00	0.00	97.00
726	1,114.47	374.70	0.00	0.00	59.63	36.32	40.42	0.00	0.00	0.00	238.33	101.50
727	1,207.80	609.64	0.00	0.00	95.31	58.05	64.61	0.00	0.00	0.00	391.67	110.00
728	1,081.53	1,692.84	0.00	0.00	59.63	36.32	40.42	1,130.22	0.00	0.00	426.25	98.50
731	1,328.58	931.03	0.00	0.00	210.40	128.15	142.62	36.11	0.00	0.00	413.75	121.00
732	839.97	618.69	0.00	0.00	94.89	57.80	64.33	0.00	0.00	0.00	401.67	76.50
733	1,125.45	1,699.35	0.00	0.00	100.18	61.02	67.91	1,086.49	0.00	0.00	383.75	102.50
736	1,199.57	842.06	0.00	0.00	182.36	111.08	123.62	0.00	0.00	0.00	425.00	109.25
744	1,092.51	358.82	0.00	0.00	0.00	0.00	0.00	62.99	0.00	0.00	295.83	99.50
745	1,048.59	238.96	0.00	0.00	104.49	63.64	70.83	0.00	0.00	0.00	0.00	95.50
748	1,427.40	1,428.80	0.00	0.00	133.61	81.38	90.57	1,123.24	0.00	0.00	0.00	130.00
751	1,207.80	242.52	0.00	0.00	59.63	36.32	40.42	106.15	0.00	0.00	0.00	110.00
752	1,715.63	1,287.85	0.00	0.00	112.95	68.80	76.57	1,029.53	0.00	0.00	0.00	156.25
754	1,177.61	240.51	0.00	0.00	90.92	55.38	61.63	32.58	0.00	0.00	0.00	107.25
754R	447.44	245.42	0.00	0.00	0.00	0.00	0.00	0.00	0.00	0.00	245.42	40.75
760	230.58	206.00	0.00	0.00	79.66	48.52	54.00	23.82	0.00	0.00	0.00	21.00
820	1,092.18	206.28	0.00	0.00	81.27	49.50	55.09	20.42	0.00	0.00	0.00	109.00
822	1,032.06	20.42	0.00	0.00	0.00	0.00	0.00	20.42	0.00	0.00	0.00	103.00
826	671.34	436.17	0.00	0.00	47.70	29.05	32.33	20.42	0.00	0.00	306.67	67.00
827	916.83	419.63	0.00	0.00	23.85	14.53	16.17	22.58	0.00	0.00	342.50	91.50
828	971.94	889.95	0.00	0.00	124.52	75.85	84.41	59.34	0.00	0.00	545.83	97.00
831	1,282.56	601.46	0.00	0.00	16.48	10.04	11.17	56.27	0.00	0.00	507.50	128.00
832	736.47	370.82	0.00	0.00	9.70	5.91	6.58	20.42	0.00	0.00	328.21	73.50
833	966.93	589.99	0.00	0.00	64.78	39.46	43.91	49.34	0.00	0.00	392.50	96.50
836	1,084.67	473.33	0.00	0.00	38.44	23.41	26.06	20.42	0.00	0.00	365.00	108.25
842	75.15	553.45	0.00	0.00	233.07	141.96	158.00	20.42	0.00	0.00	0.00	7.50
844	516.03	442.09	0.00	0.00	0.00	0.00	0.00	20.42	0.00	0.00	421.67	51.50
845	551.10	3,301.90	0.00	0.00	599.58	365.20	406.43	1,930.69	0.00	0.00	0.00	55.00
848	1,032.06	36.14	0.00	0.00	0.00	0.00	0.00	36.14	0.00	0.00	0.00	103.00
851	816.63	20.42	0.00	0.00	0.00	0.00	0.00	20.42	0.00	0.00	0.00	81.50
852	1,635.77	205.37	0.00	0.00	56.36	34.33	38.21	76.47	0.00	0.00	0.00	163.25
854	1,184.87	145.04	0.00	0.00	45.48	27.70	30.83	41.03	0.00	0.00	0.00	118.25
856	1,082.24	0.00	0.00	0.00	0.00	0.00	0.00	0.00	0.00	0.00	0.00	57.75
857	1,405.50	0.00	0.00	0.00	0.00	0.00	0.00	0.00	0.00	0.00	0.00	75.00
886	252.99	0.00	0.00	0.00	0.00	0.00	0.00	0.00	0.00	0.00	0.00	13.50
920	934.08	0.00	0.00	0.00	0.00	0.00	0.00	0.00	0.00	0.00	0.00	74.25
922	924.63	0.00	0.00	0.00	0.00	0.00	0.00	0.00	0.00	0.00	0.00	73.50
926	726.50	423.59	0.00	0.00	35.78	21.79	24.26	341.76	0.00	0.00	0.00	57.75
927	1,107.04	1,118.96	0.00	0.00	168.18	102.44	114.00	434.34	0.00	0.00	300.00	88.00
928	1,125.91	387.92	0.00	0.00	0.00	0.00	0.00	0.00	0.00	0.00	387.92	89.50
928C	169.92	835.73	0.00	0.00	230.06	140.13	155.96	0.00	0.00	0.00	309.58	16.00
931	855.44	694.64	0.00	0.00	129.40	78.82	87.72	23.70	0.00	0.00	375.00	68.00
932	562.96	805.33	0.00	0.00	121.37	73.93	82.28	162.33	0.00	0.00	365.42	44.75
933	886.89	252.50	0.00	0.00	0.00	0.00	0.00	0.00	0.00	0.00	252.50	70.50
936	1,075.62	565.33	0.00	0.00	100.17	61.01	67.90	0.00	0.00	0.00	336.25	85.50
942	128.70	99.65	0.00	0.00	43.57	26.54	29.54	0.00	0.00	0.00	0.00	13.00
944	899.47	805.99	0.00	0.00	71.55	43.58	48.50	642.36	0.00	0.00	0.00	71.50
945	625.86	238.96	0.00	0.00	104.49	63.64	70.83	0.00	0.00	0.00	0.00	49.75
948	918.34	487.86	0.00	0.00	194.56	118.51	131.89	42.90	0.00	0.00	0.00	73.00
951	842.86	0.00	0.00	0.00	0.00	0.00	0.00	0.00	0.00	0.00	0.00	67.00
952	701.34	460.93	0.00	0.00	23.85	14.53	16.17	406.38	0.00	0.00	0.00	55.75
954	720.21	117.67	0.00	0.00	51.45	31.34	34.88	0.00	0.00	0.00	0.00	57.25
B-009	0.00	1,632.08	0.00	0.00	0.00	0.00	0.00	0.00	0.00	0.00	1,632.08	0.00
S-054	0.00	49.56	0.00	0.00	21.67	13.20	14.69	0.00	0.00	0.00	0.00	0.00
S-055	0.00	49.56	0.00	0.00	21.67	13.20	14.69	0.00	0.00	0.00	0.00	0.00
(24) GREI	390,060.09	325,562.72	57,042.39	3,474.28	42,656.90	26,041.63	28,891.19	80,366.55	8,393.12	0.00	78,696.66	40,896.75
(4) NORTI	390,060.09	325,562.72	57,042.39	3,474.28	42,656.90	26,041.63	28,891.19	80,366.55	8,393.12	0.00	78,696.66	40,896.75

Rows Processed 140

Show all data where the DOT_RGN_CD matches one of the values in this list 4 and the DOT_CNTY_CD matches one of the values in this list 24 and the USER_ID matches one of the values in this list 24BPENCE and the WKST_ADDR matches one of the values in this list MDC25232605 and the MNTC_GL_ACCT matches one of the values in this list 185.01,185.02,185.03,185.04,185.05,185.06,185.08,185.09

HIGHWAY EXPENDITURES/REVENUE COMPARISON - 2016

<u>EXPENDITURES</u>	<u>REVENUES</u>		
6.14 Expenses at	6.02 Revenues at	0.12%	2016 Total over
8.33 Should be at	8.33 Should be at	1.00%	2015 Total over
2.19% To the good	2.31% Under		January

<u>EXPENDITURES</u>	<u>REVENUES</u>		
12.43 Expenses at	14.45 Revenues at	2.02%	2016 Total to the good
16.67 Should be at	16.67 Should be at	8.03%	2015 Total to the good
4.24% To the good	2.22% Under		February

<u>EXPENDITURES</u>	<u>REVENUES</u>		
18.47 Expenses at	21.83 Revenues at	3.36%	2016 Total to the good
25 Should be at	25 Should be at	9.37%	2015 Total to the good
6.53% To the good	3.17% Under		March

<u>EXPENDITURES</u>	<u>REVENUES</u>		
30.82 Expenses at	28.39 Revenues at	2.43%	2016 Total Over
33.33 Should be at	33.33 Should be at	6.03%	2015 Total to the good
2.51% To the good	4.94% Under		April

<u>EXPENDITURES</u>	<u>REVENUES</u>		
34.72 Expenses at	34.28 Revenues at	0.44%	2016 Total Over
41.67 Should be at	41.67 Should be at	0.17%	2015 Total Over
6.95% To the good	7.39% Under		May

For 01/01/16 - 05/31/16

Expenditure Summary Report

FJEXS01A

Periods 01 - 05

Highway Expense Summary

100

<u>Account No/Description</u>	<u>Adjusted Budget</u>	<u>Y-T-D Encumb</u>	<u>Period Expended</u>	<u>Y-T-D Expended</u>	<u>Available Balance</u>	<u>Percent Used</u>
16 YEAR 3						
211 County Roads and Bridges						
53309 County Supervision						
16-211-29-53309-219-000 County Supervision	117,584.00	.00	54,375.12	54,375.12	63,208.88	46.24
53309 County Supervision	117,584.00	.00	54,375.12	54,375.12	63,208.88	46.24
53310 General Mtn. C.T.H's						
16-211-29-53310-219-000 General Maintenance - CTH's	639,009.47	.00	770,084.35	770,084.35	-131,074.88	120.51
53310 General Mtn. C.T.H's	639,009.47	.00	770,084.35	770,084.35	-131,074.88	120.51
53311 C.T.H's Winter Mtn.						
16-211-29-53311-219-000 Winter Maintenance - CTH's	565,551.00	.00	461,011.79	461,011.79	104,539.21	81.52
53311 C.T.H's Winter Mtn.	565,551.00	.00	461,011.79	461,011.79	104,539.21	81.52
53312 C.T.H's Bridge Mtn & Insp CTH's						
16-211-29-53312-219-000 Bridge Maintenance & Inspection - CTH's	79,178.00	.00	.00	.00	79,178.00	.00
53312 C.T.H's Bridge Mtn & Insp CTH's	79,178.00	.00	.00	.00	79,178.00	.00
53313 Reconstruction						
16-211-29-53313-219-000 Reconstruction - CTH's	1,060,263.44	.00	12,959.59	12,959.59	1,047,303.85	1.22
53313 Reconstruction	1,060,263.44	.00	12,959.59	12,959.59	1,047,303.85	1.22
53314 Overlay						
16-211-29-53314-219-000 Overlay	556,549.00	.00	.00	.00	556,549.00	.00
53314 Overlay	556,549.00	.00	.00	.00	556,549.00	.00
53315 Chip Seal Coat						
16-211-29-53315-219-000 Chip Seal Coat	259,014.17	.00	34,136.09	34,136.09	224,878.08	13.18
53315 Chip Seal Coat	259,014.17	.00	34,136.09	34,136.09	224,878.08	13.18
53316 Rubber Crack Filling						
16-211-29-53316-219-000 Rubber Crack Filling	43,585.36	.00	11,317.62	11,317.62	32,267.74	25.97
53316 Rubber Crack Filling	43,585.36	.00	11,317.62	11,317.62	32,267.74	25.97
53317 Bridge Construction - CTH's						
16-211-29-53317-219-000 Bridge Construction CTH's	20,000.00	.00	.00	.00	20,000.00	.00
53317 Bridge Construction - CTH's	20,000.00	.00	.00	.00	20,000.00	.00
53380						
16-211-29-53380-000-000 Fair	12,000.00	.00	.00	.00	12,000.00	.00
53380	12,000.00	.00	.00	.00	12,000.00	.00
53591 Railroad						
16-211-29-53591-000-000 Railroad Consortium	25,000.00	.00	25,000.00	25,000.00	.00	100.00
53591 Railroad	25,000.00	.00	25,000.00	25,000.00	.00	100.00
29 Highway	3,377,734.44	.00	1,368,884.56	1,368,884.56	2,008,849.88	40.53
211 County Roads and Bridges	3,377,734.44	.00	1,368,884.56	1,368,884.56	2,008,849.88	40.53

For 01/01/16 - 05/31/16

Expenditure Summary Report

FJEXS01A

Periods 01 - 05

Highway Expense Summary

100

Account No/Description	Adjusted Budget	Y-T-D Encumb	Period Expended	Y-T-D Expended	Available Balance	Percent Used
16 YEAR 3						
701 Highway						
53110 Highway Administration						
16-701-29-53110-110-000	Salaries	127,910.24	.00	52,462.67	52,462.67	75,447.57 41.02
16-701-29-53110-130-000	Employee Benefits	89,537.17	.00	31,955.01	31,955.01	57,582.16 35.69
16-701-29-53110-213-000	Accounting & Auditing	1,800.00	.00	750.00	750.00	1,050.00 41.67
16-701-29-53110-225-000	Telephone	2,600.00	.00	2,003.38	2,003.38	596.62 77.05
16-701-29-53110-310-000	Office Supplies	3,000.00	.00	862.78	862.78	2,137.22 28.76
16-701-29-53110-311-000	Postage	500.00	.00	112.26	112.26	387.74 22.45
16-701-29-53110-320-000	Publications	500.00	.00	874.00	874.00	-374.00 174.80
16-701-29-53110-324-000	Member Dues	250.00	.00	.00	.00	250.00 .00
16-701-29-53110-325-000	Registrations & Conventions	800.00	.00	240.00	240.00	560.00 30.00
16-701-29-53110-335-000	Meals	150.00	.00	15.62	15.62	134.38 10.41
16-701-29-53110-336-000	Lodging	900.00	198.00	86.86	86.86	615.14 31.65
16-701-29-53110-350-000	Repair & Maintenance	2,178.00	.00	672.86	672.86	1,505.14 30.89
53110 Highway Administration		230,125.41	198.00	90,035.44	90,035.44	139,891.97 39.21
53191 Supervision						
16-701-29-53191-110-000	Salaries	56,045.52	.00	23,121.66	23,121.66	32,923.86 41.26
16-701-29-53191-120-000	Wages	.00	.00	188.82	188.82	-188.82 .00
16-701-29-53191-130-000	Employee Benefits	39,231.86	.00	14,198.42	14,198.42	25,033.44 36.19
16-701-29-53191-225-000	Telephone	1,820.00	.00	248.96	248.96	1,571.04 13.68
16-701-29-53191-330-000	Travel	.00	.00	3.80	3.80	-3.80 .00
16-701-29-53191-335-000	Meals	100.00	.00	5.24	5.24	94.76 5.24
16-701-29-53191-350-000	Repair & Maintenance	7,000.00	.00	2,691.90	2,691.90	4,308.10 38.46
16-701-29-53191-534-000	Machinery Rental	15,000.00	.00	8,424.00	8,424.00	6,576.00 56.16
53191 Supervision		119,197.38	.00	48,882.80	48,882.80	70,314.58 41.01
53192 Radio Expenses						
16-701-29-53192-206-000	Maintenance Contracts	2,160.00	.00	685.00	685.00	1,475.00 31.71
16-701-29-53192-225-000	Telephone	.00	.00	489.83	489.83	-489.83 .00
16-701-29-53192-314-000	Small Items of Equipment	600.00	.00	.00	.00	600.00 .00
16-701-29-53192-350-000	Repair & Maintenance	600.00	.00	.00	.00	600.00 .00
53192 Radio Expenses		3,360.00	.00	1,174.83	1,174.83	2,185.17 34.97
53193 General Public Liability						
16-701-29-53193-509-000	Public Liability	21,266.00	.00	.00	.00	21,266.00 .00
53193 General Public Liability		21,266.00	.00	.00	.00	21,266.00 .00
53210 Employee Taxes and Benefits Cost Pool						
16-701-29-53210-110-000	Salaries	.00	.00	1,225.06	1,225.06	-1,225.06 .00
16-701-29-53210-120-000	Wages	.00	.00	8,675.73	8,675.73	-8,675.73 .00
16-701-29-53210-125-000	Overtime	.00	.00	199.53	199.53	-199.53 .00
16-701-29-53210-131-000	Sick Leave Pay	.00	.00	7,281.75	7,281.75	-7,281.75 .00
16-701-29-53210-132-000	Vacation Pay	.00	.00	23,431.64	23,431.64	-23,431.64 .00
16-701-29-53210-134-000	Holiday Pay	.00	.00	7,709.21	7,709.21	-7,709.21 .00

For 01/01/16 - 05/31/16

Expenditure Summary Report

FJEXS01A

Periods 01 - 05

Highway Expense Summary

100

Account No/Description	Adjusted Budget	Y-T-D Encumb	Period Expended	Y-T-D Expended	Available Balance	Percent Used
16 YEAR 3						
701 Highway						
53210 Employee Taxes and Benefits Cost Pool						
16-701-29-53210-135-000 Floating Holiday	.00	.00	1,528.40	1,528.40	-1,528.40	.00
16-701-29-53210-137-100 Comp-Accumulated	.00	.00	-9,155.56	-9,155.56	9,155.56	.00
16-701-29-53210-137-300 Comp - Use	.00	.00	2,952.92	2,952.92	-2,952.92	.00
16-701-29-53210-138-000 Other - leave with pay	.00	.00	874.94	874.94	-874.94	.00
16-701-29-53210-151-000 Social Security	.00	.00	33,529.63	33,529.63	-33,529.63	.00
16-701-29-53210-153-000 Ret. Employer Share	.00	.00	29,218.13	29,218.13	-29,218.13	.00
16-701-29-53210-154-000 Health Insurance	.00	.00	165,469.61	165,469.61	-165,469.61	.00
16-701-29-53210-155-000 Life Insurance	.00	.00	924.54	924.54	-924.54	.00
16-701-29-53210-910-000 Employee Taxes & Benefits	.00	.00	-246,236.62	-246,236.62	246,236.62	.00
53210 Employee Taxes and Benefits Cost Pool	.00	.00	27,628.91	27,628.91	-27,628.91	.00
53220 Field Small Tools Cost Pool						
16-701-29-53220-130-120 Employee Benefits	.00	.00	321.04	321.04	-321.04	.00
16-701-29-53220-130-121 Employee Benefit	.00	.00	348.73	348.73	-348.73	.00
16-701-29-53220-362-120 Consumable Small Tools-Field	.00	.00	2,097.39	2,097.39	-2,097.39	.00
16-701-29-53220-362-121 Consumable Small Tools-Safety	.00	.00	4,940.60	4,940.60	-4,940.60	.00
16-701-29-53220-362-122 Consumable Small Tools-Traffic	.00	.00	140.40	140.40	-140.40	.00
16-701-29-53220-920-000 Small Field Tools	.00	.00	-19,860.84	-19,860.84	19,860.84	.00
53220 Field Small Tools Cost Pool	.00	.00	-12,012.68	-12,012.68	12,012.68	.00
53230 Shop Operations Cost Pool						
16-701-29-53230-120-000 Wages	.00	.00	2,223.21	2,223.21	-2,223.21	.00
16-701-29-53230-130-000 Employee Benefits	.00	.00	1,354.16	1,354.16	-1,354.16	.00
16-701-29-53230-225-000 Telephone	.00	.00	552.73	552.73	-552.73	.00
16-701-29-53230-310-000 Office Supplies	.00	.00	126.72	126.72	-126.72	.00
16-701-29-53230-311-000 Postage	.00	.00	10.62	10.62	-10.62	.00
16-701-29-53230-314-000 Small Items of Equipment	.00	.00	1,191.14	1,191.14	-1,191.14	.00
16-701-29-53230-340-000 Operating Supplies	.00	.00	3,164.58	3,164.58	-3,164.58	.00
16-701-29-53230-345-000 Shop Supplies	.00	.00	3,284.69	3,284.69	-3,284.69	.00
16-701-29-53230-350-000 Repair & Maintenance	.00	.00	958.00	958.00	-958.00	.00
53230 Shop Operations Cost Pool	.00	.00	12,865.85	12,865.85	-12,865.85	.00
53232 Fuel Handling Cost Pool						
16-701-29-53232-120-000 Wages	.00	.00	310.05	310.05	-310.05	.00
16-701-29-53232-130-000 Employee Benefits	.00	.00	188.85	188.85	-188.85	.00
16-701-29-53232-225-000 Telephone	.00	.00	375.37	375.37	-375.37	.00
16-701-29-53232-350-000 Repair & Maintenance	.00	.00	1,142.23	1,142.23	-1,142.23	.00
16-701-29-53232-534-000 Machinery Rental	.00	.00	51.28	51.28	-51.28	.00
16-701-29-53232-931-000 Fuel Handling Revenue	.00	.00	-2,818.62	-2,818.62	2,818.62	.00
53232 Fuel Handling Cost Pool	.00	.00	-750.84	-750.84	750.84	.00
53240 Machinery Operating Cost Pool						
16-701-29-53240-120-000 Wages	85,810.55	.00	41,895.47	41,895.47	43,915.08	48.82

For 01/01/16 - 05/31/16

Expenditure Summary Report

FJEXS01A

Periods 01 - 05

Highway Expense Summary

100

Account No/Description	Adjusted Budget	Y-T-D Encumb	Period Expended	Y-T-D Expended	Available Balance	Percent Used
16 YEAR 3						
701 Highway						
53240 Machinery Operating Cost Pool						
16-701-29-53240-125-000 Overtime	1,109.10	.00	1,650.59	1,650.59	-541.49	148.82
16-701-29-53240-130-000 Employee Benefits	60,843.75	.00	26,523.92	26,523.92	34,319.83	43.59
16-701-29-53240-350-000 Repair & Maintenance	390,000.00	.00	125,878.91	125,878.91	264,121.09	32.28
16-701-29-53240-356-000 Work Order Lbr/ILC	-5,000.00	.00	-378.44	-378.44	-4,621.56	7.57
16-701-29-53240-381-000 Shop Overhead Recovered	-1,000.00	.00	-221.90	-221.90	-778.10	22.19
16-701-29-53240-512-000 Insurance on Equipment	12,289.00	.00	.00	.00	12,289.00	.00
16-701-29-53240-534-000 Machinery Rental	2,471.19	.00	2,256.24	2,256.24	214.95	91.30
16-701-29-53240-540-000 Depreciation & Amortization	240,000.00	.00	.00	.00	240,000.00	.00
16-701-29-53240-940-000 Mach. Operation Rev.	-1,131,562.88	.00	-390,060.09	-390,060.09	-741,502.79	34.47
53240 Machinery Operating Cost Pool	-345,039.29	.00	-192,455.30	-192,455.30	-152,583.99	55.78
53270 Buildings & Ground Operations Cost Pool						
16-701-29-53270-120-000 Wages	.00	.00	12,760.15	12,760.15	-12,760.15	.00
16-701-29-53270-130-000 Employee Benefits	.00	.00	7,772.21	7,772.21	-7,772.21	.00
16-701-29-53270-220-000 Utilities	.00	.00	14,598.17	14,598.17	-14,598.17	.00
16-701-29-53270-240-000 Contracted Maintenance	.00	.00	3,447.52	3,447.52	-3,447.52	.00
16-701-29-53270-245-000 Building & Ground Improvements	.00	.00	1,241.85	1,241.85	-1,241.85	.00
16-701-29-53270-344-000 Janitorial Supplies	.00	.00	509.53	509.53	-509.53	.00
16-701-29-53270-350-000 Repair & Maintenance	.00	.00	144.28	144.28	-144.28	.00
16-701-29-53270-534-000 Machinery Rental	.00	.00	1,422.21	1,422.21	-1,422.21	.00
53270 Buildings & Ground Operations Cost Pool	.00	.00	41,895.92	41,895.92	-41,895.92	.00
53271 Salt Sheds Cost Pool						
16-701-29-53271-120-000 Wages	.00	.00	764.98	764.98	-764.98	.00
16-701-29-53271-130-000 Employee Benefits	.00	.00	465.95	465.95	-465.95	.00
16-701-29-53271-534-000 Machinery Rental	.00	.00	545.05	545.05	-545.05	.00
53271 Salt Sheds Cost Pool	.00	.00	1,775.98	1,775.98	-1,775.98	.00
53281 Capital Equipment						
16-701-29-53281-810-000 Capital Equipment	306,575.90	.00	25,082.90	25,082.90	281,493.00	8.18
53281 Capital Equipment	306,575.90	.00	25,082.90	25,082.90	281,493.00	8.18
53309 County Supervision						
16-701-29-53309-110-000 Salaries	55,726.00	.00	25,222.76	25,222.76	30,503.24	45.26
16-701-29-53309-120-000 Wages	.00	.00	535.37	535.37	-535.37	.00
16-701-29-53309-130-000 Employee Benefits	39,008.00	.00	15,689.27	15,689.27	23,318.73	40.22
16-701-29-53309-225-000 Telephone	.00	.00	339.61	339.61	-339.61	.00
16-701-29-53309-325-000 Registration & Conventions	200.00	.00	20.00	20.00	180.00	10.00
16-701-29-53309-335-000 Meals	50.00	.00	7.95	7.95	42.05	15.90
16-701-29-53309-350-000 Repair & Maintenance	8,000.00	.00	3,623.51	3,623.51	4,376.49	45.29
16-701-29-53309-534-000 Machinery Rentals	14,600.00	.00	6,654.96	6,654.96	7,945.04	45.58
53309 County Supervision	117,584.00	.00	52,093.43	52,093.43	65,490.57	44.30
53310 General Mtn. C.T.H's						

For 01/01/16 - 05/31/16

Expenditure Summary Report

FJEXS01A

Periods 01 - 05

Highway Expense Summary

100

Account No/Description	Adjusted Budget	Y-T-D Encumb	Period Expended	Y-T-D Expended	Available Balance	Percent Used
16 YEAR 3						
701 Highway						
53310 General Mtn. C.T.H's						
16-701-29-53310-101-120	Wages	125,863.55	.00	62,370.51	62,370.51	63,493.04 49.55
16-701-29-53310-101-125	Overtime	524.10	.00	207.94	207.94	316.16 39.68
16-701-29-53310-101-130	Benefits	88,471.36	.00	38,116.55	38,116.55	50,354.81 43.08
16-701-29-53310-101-240	Contracted Maintenance	300.00	.00	.00	.00	300.00 .00
16-701-29-53310-101-350	Repair & Maintenance	.00	.00	396.65	396.65	-396.65 .00
16-701-29-53310-101-360	Other Repair & Maintenance	200.00	.00	.00	.00	200.00 .00
16-701-29-53310-101-362	Consumable Small Tool	6,445.77	.00	5,135.46	5,135.46	1,310.31 79.67
16-701-29-53310-101-370	Road Supplies	36,000.00	.00	12,736.28	12,736.28	23,263.72 35.38
16-701-29-53310-101-534	Equipment/Machinery	169,000.00	.00	49,995.55	49,995.55	119,004.45 29.58
16-701-29-53310-102-120	Wages	17,748.22	.00	8,745.02	8,745.02	9,003.20 49.27
16-701-29-53310-102-125	Overtime	146.40	.00	.00	.00	146.40 .00
16-701-29-53310-102-130	Benefits	12,526.23	.00	5,326.60	5,326.60	7,199.63 42.52
16-701-29-53310-102-350	Repair & Maintenance	500.00	.00	.00	.00	500.00 .00
16-701-29-53310-102-360	Other Repair & Maintenance	1,000.00	.00	.00	.00	1,000.00 .00
16-701-29-53310-102-362	Consumable Small Tool	912.63	.00	717.65	717.65	194.98 78.64
16-701-29-53310-102-370	Road Supplies	80,000.00	.00	16,773.82	16,773.82	63,226.18 20.97
16-701-29-53310-102-534	Equipment/Machinery	12,000.00	.00	5,344.76	5,344.76	6,655.24 44.54
16-701-29-53310-103-120	Wages	17,190.83	.00	54.47	54.47	17,136.36 .32
16-701-29-53310-103-130	Benefits	12,033.58	.00	33.18	33.18	12,000.40 .28
16-701-29-53310-103-362	Consumable Small Tool	876.73	.00	4.47	4.47	872.26 .51
16-701-29-53310-103-370	Road Supplies	22,269.97	.00	.00	.00	22,269.97 .00
16-701-29-53310-103-534	Equipment/Machinery	35,000.00	.00	100.06	100.06	34,899.94 .29
53310 General Mtn. C.T.H's		639,009.37	.00	206,058.97	206,058.97	432,950.40 32.25
53311 C.T.H's Winter Mtn.						
16-701-29-53311-120-000	Wages	110,688.72	.00	67,449.02	67,449.02	43,239.70 60.94
16-701-29-53311-125-000	Overtime	18,612.00	.00	9,670.02	9,670.02	8,941.98 51.96
16-701-29-53311-130-000	Employee Benefits	90,510.50	.00	46,973.22	46,973.22	43,537.28 51.90
16-701-29-53311-350-000	Repair & Maintenance	1,400.00	.00	591.09	591.09	808.91 42.22
16-701-29-53311-362-000	Consumable Small Tools	6,594.34	.00	6,328.71	6,328.71	265.63 95.97
16-701-29-53311-370-000	Road supplies	153,745.61	.00	135,463.41	135,463.41	18,282.20 88.11
16-701-29-53311-534-000	Machinery Rental	184,000.00	.00	175,396.31	175,396.31	8,603.69 95.32
53311 C.T.H's Winter Mtn.		565,551.17	.00	441,871.78	441,871.78	123,679.39 78.13
53312 C.T.H's Bridge Mtn & Insp CTH's						
16-701-29-53312-000-000	Bridge Maintenance and Inspection -CTH's	76,000.00	.00	.00	.00	76,000.00 .00
16-701-29-53312-120-000	Wages	1,243.87	.00	.00	.00	1,243.87 .00
16-701-29-53312-130-000	Employee Benefits	870.71	.00	.00	.00	870.71 .00
16-701-29-53312-362-000	Consumable Small Tools	63.44	.00	.00	.00	63.44 .00
16-701-29-53312-534-000	Machinery Rental	1,000.00	.00	.00	.00	1,000.00 .00
53312 C.T.H's Bridge Mtn & Insp CTH's		79,178.02	.00	.00	.00	79,178.02 .00

For 01/01/16 - 05/31/16

Expenditure Summary Report

FJEXS01A

Periods 01 - 05

Highway Expense Summary

100

Account No/Description	Adjusted Budget	Y-T-D Encumb	Period Expended	Y-T-D Expended	Available Balance	Percent Used
16 YEAR 3						
701 Highway						
53313 Reconstruction						
16-701-29-53313-000-000 Reconstruction-CTH's	657,982.13	.00	.00	.00	657,982.13	.00
16-701-29-53313-120-000 Wages	184,481.19	.00	.00	.00	184,481.19	.00
16-701-29-53313-125-000 Overtime	390.00	.00	.00	.00	390.00	.00
16-701-29-53313-130-000 Employee Benefits	129,409.83	.00	.00	.00	129,409.83	.00
16-701-29-53313-275-000 CTH M (County Line-CTH X)	.00	.00	11,628.42	11,628.42	-11,628.42	.00
16-701-29-53313-290-000 CTH YY (CTH Y-CTH D)	.00	.00	787.35	787.35	-787.35	.00
53313 Reconstruction	972,263.15	.00	12,415.77	12,415.77	959,847.38	1.28
53314 Overlay						
16-701-29-53314-120-000 Wages	23,023.25	.00	.00	.00	23,023.25	.00
16-701-29-53314-125-000 Overtime	1,194.30	.00	.00	.00	1,194.30	.00
16-701-29-53314-130-000 Employee Benefits	16,952.29	.00	.00	.00	16,952.29	.00
16-701-29-53314-362-000 STR	1,235.10	.00	.00	.00	1,235.10	.00
16-701-29-53314-370-000 Road Supplies	415,295.67	.00	.00	.00	415,295.67	.00
16-701-29-53314-534-000 Machinery Rental	38,848.59	.00	.00	.00	38,848.59	.00
53314 Overlay	496,549.20	.00	.00	.00	496,549.20	.00
53315 Chip Seal Coat						
16-701-29-53315-000-000 Chip Seal Coat	259,014.17	.00	32,703.67	32,703.67	226,310.50	12.63
53315 Chip Seal Coat	259,014.17	.00	32,703.67	32,703.67	226,310.50	12.63
53316 Rubber Crack Filling						
16-701-29-53316-000-000 Rubber Crack Filling	43,585.36	.00	10,842.70	10,842.70	32,742.66	24.88
53316 Rubber Crack Filling	43,585.36	.00	10,842.70	10,842.70	32,742.66	24.88
53317 Bridge Construction - CTH's						
16-701-29-53317-000-000 Bridge Construction - CTH's	20,000.00	.00	-1,147.54	-1,147.54	21,147.54	-5.74
53317 Bridge Construction - CTH's	20,000.00	.00	-1,147.54	-1,147.54	21,147.54	-5.74
53321 Routine Maintenance						
16-701-29-53321-000-000 Routine Maintenance - State	40,000.00	.00	3,108.81	3,108.81	36,891.19	7.77
16-701-29-53321-120-000 Wages	94,098.15	.00	49,417.50	49,417.50	44,680.65	52.52
16-701-29-53321-125-000 Overtime	6,512.70	.00	4,026.06	4,026.06	2,486.64	61.82
16-701-29-53321-130-000 Employee Benefits	70,427.60	.00	32,552.49	32,552.49	37,875.11	46.22
16-701-29-53321-362-000 Consumable Small Tools	5,131.15	.00	4,385.80	4,385.80	745.35	85.47
16-701-29-53321-370-000 Road Supplies	10,000.00	.00	23,013.46	23,013.46	-13,013.46	**
16-701-29-53321-534-000 Machinery Repair	120,000.00	.00	84,998.91	84,998.91	35,001.09	70.83
53321 Routine Maintenance	346,169.60	.00	201,503.03	201,503.03	144,666.57	58.21
53333 Cities, Towns, Villages						
16-701-29-53333-120-000 Wages	12,000.00	.00	21,189.58	21,189.58	-9,189.58	176.58
16-701-29-53333-125-000 Overtime	1,462.50	.00	.00	.00	1,462.50	.00
16-701-29-53333-130-000 Employee Benefits	4,373.99	.00	12,906.60	12,906.60	-8,532.61	**
16-701-29-53333-350-000 Repair & Maintenance	139,476.92	.00	12,465.98	12,465.98	127,010.94	8.94
16-701-29-53333-362-000 Consumable Small Tools	686.59	.00	1,738.89	1,738.89	-1,052.30	**

For 01/01/16 - 05/31/16

Expenditure Summary Report

FJEXS01A

Periods 01 - 05

Highway Expense Summary

100

<u>Account No/Description</u>	<u>Adjusted Budget</u>	<u>Y-T-D Encumb</u>	<u>Period Expended</u>	<u>Y-T-D Expended</u>	<u>Available Balance</u>	<u>Percent Used</u>
16 YEAR 3						
701 Highway						
53333 Cities, Towns, Villages						
16-701-29-53333-370-000 Road Supplies	125,000.00	.00	63,154.82	63,154.82	61,845.18	50.52
16-701-29-53333-534-000 Machinery Rental	17,000.00	.00	31,536.72	31,536.72	-14,536.72	185.51
53333 Cities, Towns, Villages	300,000.00	.00	142,992.59	142,992.59	157,007.41	47.66
53334 Interdepartment Charges						
16-701-29-53334-000-000 Interdepartmental Charges	115,160.00	.00	35,838.18	35,838.18	79,321.82	31.12
53334 Interdepartment Charges	115,160.00	.00	35,838.18	35,838.18	79,321.82	31.12
29 Highway	4,289,549.44	198.00	1,179,296.39	1,179,296.39	3,110,055.05	27.50
701 Highway	4,289,549.44	198.00	1,179,296.39	1,179,296.39	3,110,055.05	27.50
16 YEAR 3	7,667,283.88	198.00	2,548,180.95	2,548,180.95	5,118,904.93	33.24

GREEN LAKE COUNTY

For 01/01/16 - 05/31/16

Revenue Summary Report

FJRES01A

Periods 01 - 05

Highway Revenue Summary

100-R

<u>Account No/Description</u>	<u>Budget Amount</u>	<u>Period Amount</u>	<u>Y-T-D Amount</u>	<u>Balance</u>	<u>Percent Received</u>
16 YEAR 3					
211 County Roads and Bridges					
29 Highway					
16-211-29-41110-000-000 General Property Taxes	2,598,558.44	2,598,558.44	2,598,558.44	.00	100.00
16-211-29-43531-000-000 CTH's Revenue from State	779,176.00	185,795.12	185,795.12	593,380.88	23.85
29 Highway	3,377,734.44	2,784,353.56	2,784,353.56	593,380.88	82.43
211 County Roads and Bridges	3,377,734.44	2,784,353.56	2,784,353.56	593,380.88	82.43

GREEN LAKE COUNTY

For 01/01/16 - 05/31/16

Revenue Summary Report

FJRES01A

Periods 01 - 05

Highway Revenue Summary

100-R

<u>Account No/Description</u>	<u>Budget Amount</u>	<u>Period Amount</u>	<u>Y-T-D Amount</u>	<u>Balance</u>	<u>Percent Received</u>
16 YEAR 3					
701 Highway					
29 Highway					
16-701-29-44201-000-000 Off Pavement Utility Fee	1,100.00	450.00	450.00	650.00	40.91
16-701-29-44202-000-000 Borings	325.00	150.00	150.00	175.00	46.15
16-701-29-44203-000-000 Open Cut	800.00	.00	.00	800.00	.00
16-701-29-44205-000-000 Driveway/Variance	400.00	300.00	300.00	100.00	75.00
16-701-29-44206-000-000 Driveway Alteration	500.00	250.00	250.00	250.00	50.00
16-701-29-44260-000-000 Oversize/Overweight Permits	100.00	100.00	100.00	.00	100.00
16-701-29-44261-000-000 Multi-Trip Permits	1,300.00	1,850.00	1,850.00	-550.00	142.31
16-701-29-47231-000-000 Routine Maintenance	346,169.60	175,017.49	175,017.49	171,152.11	50.56
16-701-29-47239-000-000 Other - Sup. R&R-Radio-GPL etc	118,460.40	41,949.55	41,949.55	76,510.85	35.41
16-701-29-47292-000-000 State - Admin	15,000.00	9,238.62	9,238.62	5,761.38	61.59
16-701-29-47300-000-000 Cities, Villages, Towns, Cty.	300,000.00	143,249.23	143,249.23	156,750.77	47.75
16-701-29-47392-000-000 Local - Admin Charges	13,000.00	5,348.67	5,348.67	7,651.33	41.14
16-701-29-47410-000-000 Interdepartmental Invoicing	115,160.00	35,838.18	35,838.18	79,321.82	31.12
16-701-29-47430-000-000 Charges for Services - CTH's	3,192,734.44	755,781.33	755,781.33	2,436,953.11	23.67
16-701-29-47492-000-000 CTH's - Admin	148,000.00	33,103.22	33,103.22	114,896.78	22.37
16-701-29-48000-000-000 Miscellaneous Revenues	4,000.00	1,973.93	1,973.93	2,026.07	49.35
16-701-29-48330-000-000 Sale of Materials & Supplies	4,500.00	205.00	205.00	4,295.00	4.56
16-701-29-48340-000-000 Sale of Used Equipment	8,000.00	24,970.00	24,970.00	-16,970.00	312.13
16-701-29-48400-000-000 Insurance Recoveries	5,000.00	257.36	257.36	4,742.64	5.15
16-701-29-48440-000-000 Revenue from Cost of Sales	15,000.00	6,010.06	6,010.06	8,989.94	40.07
29 Highway	4,289,549.44	1,236,042.64	1,236,042.64	3,053,506.80	28.82
701 Highway	4,289,549.44	1,236,042.64	1,236,042.64	3,053,506.80	28.82
16 YEAR 3	7,667,283.88	4,020,396.20	4,020,396.20	3,646,887.68	52.44

RESOLUTION NO. -2016

Relating to Transportation Funding for Local and State Roads

The County Board of Supervisors of Green Lake County, Green Lake Wisconsin, duly assembled at its regular meeting begun on the 21st day of June, 2016, does resolve as follows:

WHEREAS, local government in Wisconsin is responsible for about 90% of the road miles in the state; and

WHEREAS, Wisconsin's diverse economy is dependent upon county and town roads as well as city and village streets and transit systems across the state; and

WHEREAS, according to "Filling Potholes: A new Look at Funding Local Transportation in Wisconsin," commissioned by the Local Government Institute of Wisconsin (LGI) the condition of Wisconsin's highways is now in the bottom third of the country; and

WHEREAS, state funding for local roads in Wisconsin has failed to keep up with the costs over the past several decades which has adversely affected local transportation finances. According to "Filling Potholes," municipal transportation spending has declined from \$275 per capita in 2000 to \$227 in 2012; and

WHEREAS, levy limits do not allow local government to make up for the deterioration of state funding; and

Roll Call on Resolution No. - 2016

Aye ____, Nay ____, Absent ____, Abstain ____

Passed & Adopted/Rejected this 21st
day of June, 2016

County Board Chairman

Attest: County Clerk
Approved as to Form:

Corporation Counsel

Submitted by Highway Committee

Paul Schwandt- Chairman

Ben Moderow- Vice Chair

Vicki Bernhagen

Rich Slate

WHEREAS, Wisconsin's over-reliance on borrowing eats away at the state's segregated funding sources – the state gas tax and vehicle registration fees – which increasingly pay debt service rather than fund transportation needs; and

WHEREAS, safety is a primary concern and responsibility of local governments across Wisconsin. Unfortunately, according to TRIP, a national non-profit transportation research group, Wisconsin had 347 non-interstate, rural road fatalities in 2013; and

WHEREAS, the Green Lake County Board of Supervisors recognizes that our state highway and interstate system is the backbone of our surface transportation system and plays a vital role in the economy of Wisconsin. Both local *and* state roads need to be properly maintained in order for our economy to grow; and

WHEREAS, from a competitive standpoint Wisconsin motorists pay significantly less than any of our neighbors when you combine the annual cost of the state gas tax and vehicle registration fees, and

WHEREAS, the Transportation Finance and Policy Commission, appointed by the Governor and Legislature clearly found that if Wisconsin does not adjust its user fees, the condition of both our state and local roads will deteriorate significantly over the next decade.

NOW, THEREFORE, BE IT RESOLVED by the Green Lake County Board of Supervisors urge the Governor and Legislature to Just Fix It and agree upon a sustainable solution: one that includes a responsible level of bonding and adjusts our user fees to adequately and sustainably fund Wisconsin's transportation system.

BE IT FURTHER RESOLVED, the Green Lake County Board of Supervisors directs the Clerk to send a copy of this resolution to our State Legislators and to Governor Scott Walker.



GREEN LAKE COUNTY HIGHWAY COMMISSION

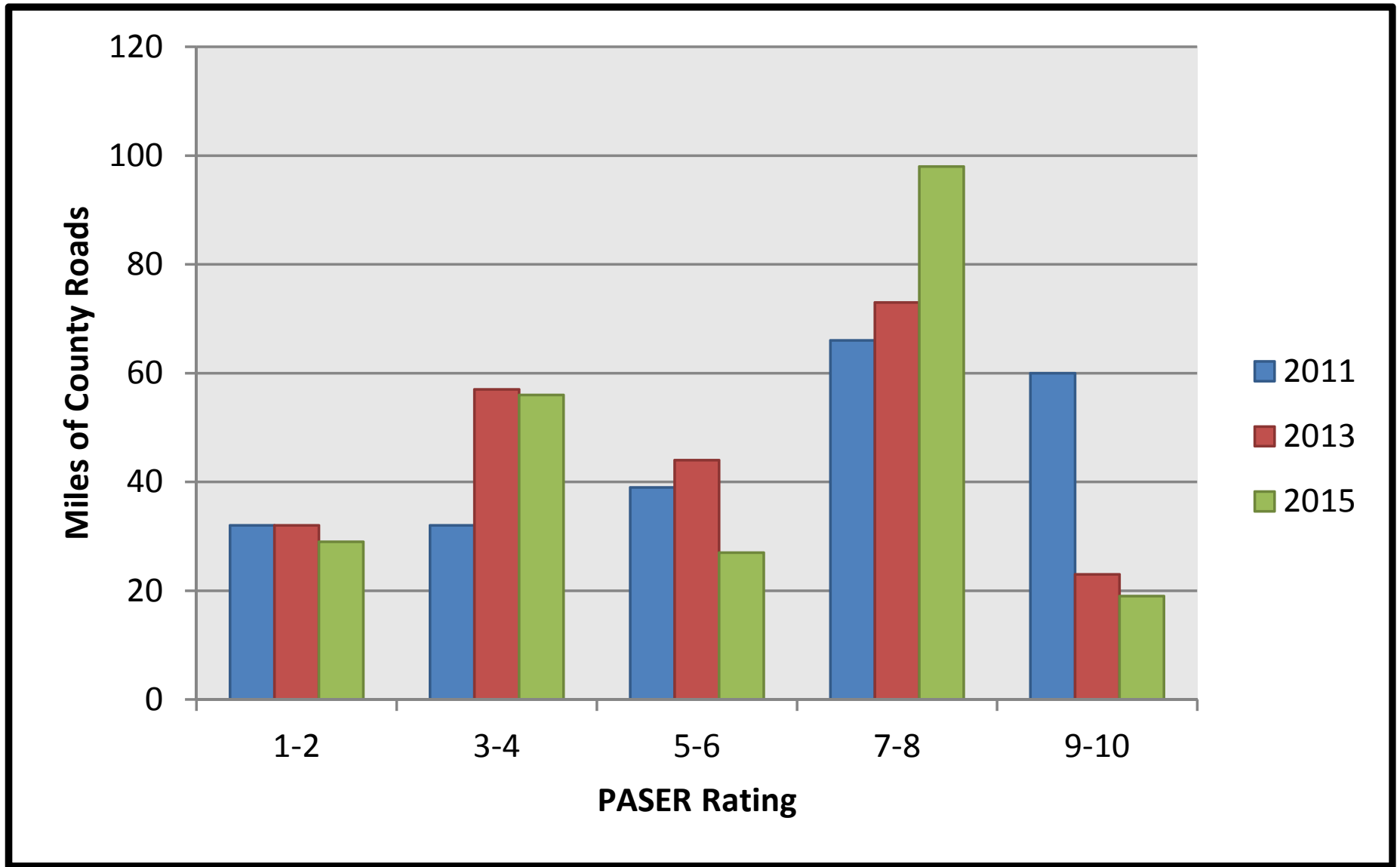
Amy M. Brooks, P.E.
Highway Commissioner

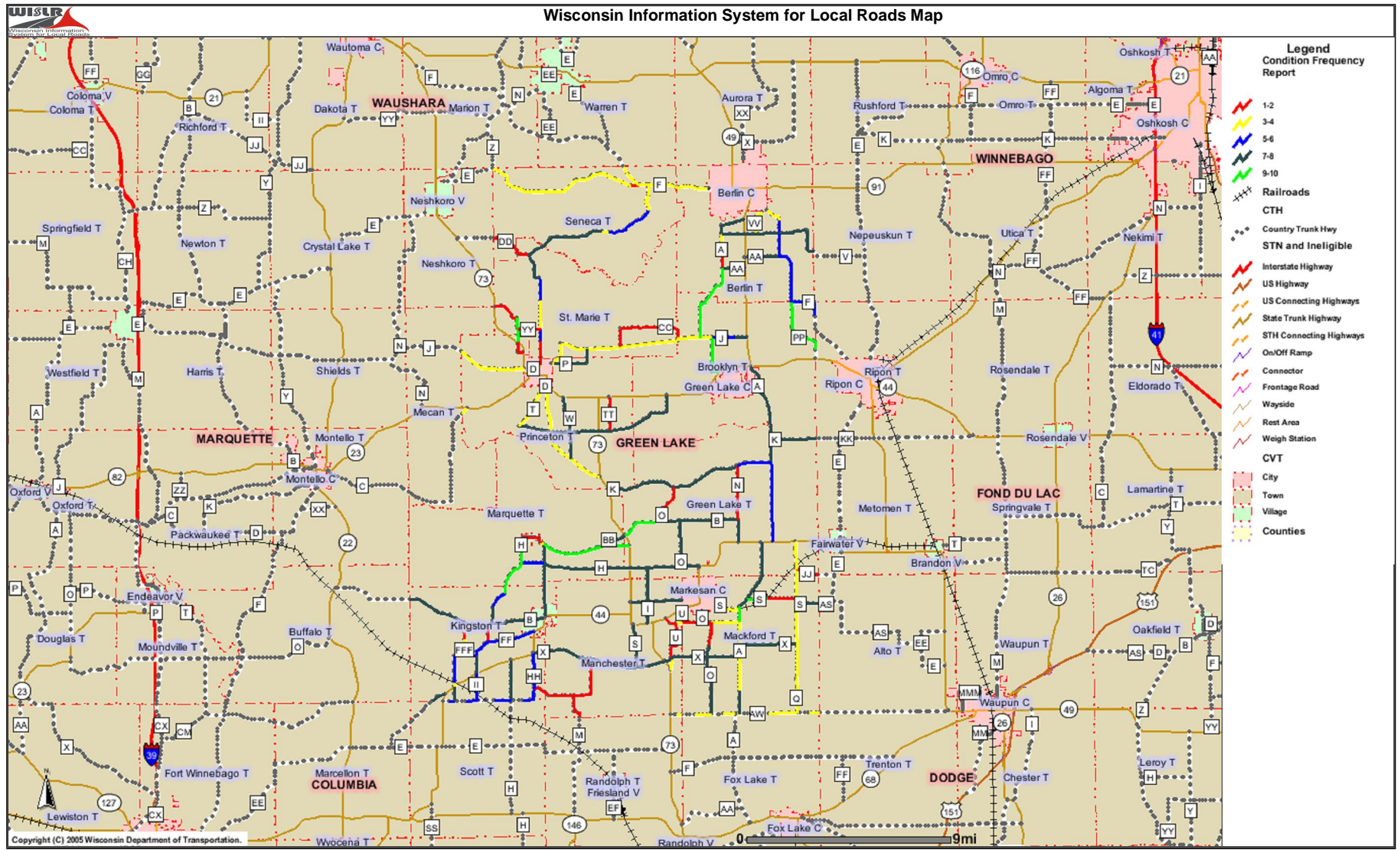
Office: 920-294-4060
Fax: 920-294-4066
Email: abrooks@co.green-lake.wi.us

Bridge Inspection RFP

	<u>Unit Price</u>	<u>Total Price</u>
Jewell Associates Engineers, Inc.	\$220.00	\$3,960.00
CORRE, Inc	\$400.00	\$7,200.00

Green Lake County PASER Ratings

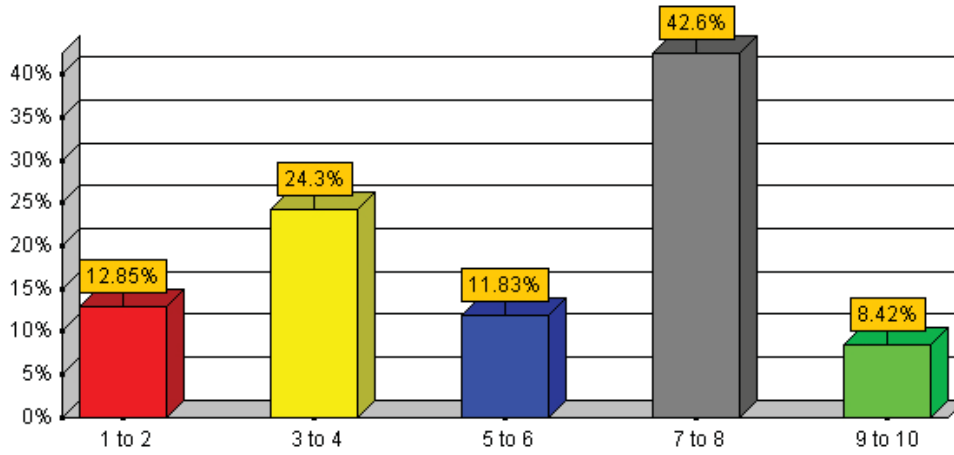




The information contained in this data set and information produced from this dataset were created for the official use of the Wisconsin Department of Transportation (WisDOT). Any other use while not prohibited, is the sole responsibility of the user. WisDOT expressly disclaims all liability regarding fitness of use of the information for other than official WisDOT business.

Condition Frequency Report - Paved Green Lake

Generated on 05/17/2016 01:16:59 PM



Rating Range

- Based on 228.91 miles of rated roadways.
- Paved: 45,50,52,55,57,60,65,70,75

Rich Slate

February 4, 2016

Green Lake County Highway Department
Attention: Amy Brooks
PO Box 159
Green Lake WI 54941

Dear Commissioner Brooks,

After thinking about the tire changing policy the Highway Committee approved last meeting, I wondered about the fiscal analysis provided. More specifically:

- a. How were these figures obtained?
 - i. Do they include the soft costs?
 1. Does Cliff's Tires charge a service call fee?
 2. Time for County workers to drop off or pick up tires?
- b. How many tires are fixed in a year and what is the average yearly cost?
- c. What is the procedure when there is a flat tire?
 - i. Does Cliff's automatically go and change them?
 - ii. Does the County put on a spare tire and then get the bad one fixed?

I did not want to make a big deal about it at the meeting, but the more I thought about it, there was not enough information needed to make an informed decision. If this information can be easily obtained, it would be interesting to figure out the actual financial impact of our decision.

Sincerely,

Rich Slate

cc: Administrative Assistant Becky Pence (by email)

PO BOX 400
Markesan, WI 53946
(920)398-2371



GREEN LAKE COUNTY HIGHWAY COMMISSION

Amy M. Brooks, P.E.
Highway Commissioner

Office: 920-294-4060
Fax: 920-294-4066
Email: abrooks@co.green-lake.wi.us

Tire Costs

a. How were these figures obtained?

\$25.00/tire - dismount/mount cost per tire from Cliff's invoice for dump trucks.
2015 Labor cost including ILC & overhead: \$71.07/hr. x (22.5 mins/60 mins/hr.) = \$26.65
2016 Labor cost including ILC & overhead: \$59.60/hr. x (22.5 mins/60 mins/hr.) = \$22.35
Assumptions: time to change tire 15-30mins (22.5 mins. Avg)

Costs for equipment needed for Green Lake County Highway to change tires were estimated at \$2,500. Quote obtained from Truck Equipment Inc for Cage, Cheetah, Tire dismount kit, was for \$2,087.95.

- i. **Do they include the soft costs?** Cliff's charges include picking up old rim/tire assembly at our shop and taking back to their shop where they dismount/mount tire, they then return the rim/tire.
 1. **Does Cliff's Tires charge a service call fee?** Only if needed to come out to job for a repair/mount/dismount (\$85). (Example: mower tire filled with fluid)
 2. **Time for County workers to drop off or pick up tires?** No County time to pick up or drop off, Cliff's picks up.

b. How many tires are fixed in a year and what is the average yearly cost?

Total 2015 cost to dismount/mount tires was \$745 on 18 trucks/equipment
The cost to dismount/mount varies on type of equipment. Average cost for a dump truck is \$25, other equipment varies from \$20 - \$45.

c. What is the procedure when there is a flat tire?

- i. **Does Cliff's automatically go and change them?** No, we call to let them know when they need to come to our shop.
- ii. **Does the County put on a spare tire and then get the bad one fixed?** Yes, we keep a few spares on hand and we replace the rim/tire assembly as needed.

ADOPT-A-HIGHWAY APPLICATION/PERMIT

16-2915-01

Please complete this application and submit it to: *Becky Pence*

Group Name as it should appear on the sign (14 spaces on each of the three lines.)
If you have more than 14, the letters will be smaller.

C	O	U	N	T	Y	L	I	N	E		
		L	U	T	H	E	R	A	N		
		C	H	U	R	C	H				

Group Name <i>County Line Lutheran Church</i>	
Mailing Address <i>W10505 County Road AW</i>	(Area Code) Parcel Number
City, State, ZIP Code <i>Markesan, WI 53946</i>	(Area Code) Telephone Number - Daytime <i>920-398-2748</i>
Contact Person Name <i>Jon Jacobs</i>	(Area Code) Telephone Number - Evening <i>920-296-9030 Preferred</i>
Mailing Address <i>W4536 Winding Ln.</i>	Approximate Number of People Participating in Each Cleanup <i>20-25</i>
City, State, ZIP Code <i>Cambria, WI 53923</i>	Number of Times Your Group Plans to Pick up Litter This Year - Minimum 3 Times <i>3</i>

Highway Section you Want to Adopt - List Alternate Sections in Order of Preference

HIGHWAY NAME/NUMBER	FROM	TO	IN COUNTY
<i>CTH AW</i>	<i>STH 73</i>	<i>CTH A</i>	<i>GREEN LAKE</i>

By signature below, the Group acknowledges the hazardous nature of the work and agrees to the terms and conditions stated on the attached page to this form.

Signature of Authorized Group Representative - Must be 18 years or older <i>Jon Jacobs</i>	Date <i>5/23/16</i>
Title <i>Church Council President</i>	

DO NOT WRITE BELOW THIS LINE

PERMIT APPROVAL The Green Lake County Highway Committee approves this permit for the Group to participate in the Adopt-A-Highway Program for the section identified above. The Group accepts the responsibility of picking up litter on this section of highway. The Green Lake County Highway Committee reserves the right to modify or cancel this permit at any time. Please notify the Green Lake County Highway Department with any group information change.

Adopt-A-Highway Coordinator Signature	Date	Permit Number

The Green Lake County Highway Committee and the volunteer group (the "Group") named on this application, recognize the need and the desirability of litter-free highways.

STP-Rural Standard SMA



STATE/MUNICIPAL AGREEMENT FOR A STATE-LET STP-RURAL PROJECT

STP-Rural
Sub-program #: 206

Revised Date: N/A
Date: 25 May 2016
I.D.: 6425-00-00: Design
6425-00-70: Construction
Road Name: CTH D
Limits: Princeton – Berlin
STH 23 to Old Saint Marie Road
County: Green Lake
Roadway Length: 0.7 miles
Functional Classification: Major Collector
Project Sponsor: Green Lake County

The signatory, **Green Lake County**, hereinafter called the Municipality, through its undersigned duly authorized officers or officials, hereby requests the State of Wisconsin Department of Transportation, hereinafter called the State, to initiate and effect the highway or street improvement hereinafter described.

The authority for the Municipality to enter into this agreement with the State is provided by Sections 86.25(1), (2), and (3) and Section 66.0301 of the Statutes.

NEEDS AND ESTIMATE SUMMARY:

All components of the project must be defined in the environmental document if any portion of the project is federally funded. The Municipality agrees to complete all participating and any non-participating work included in this improvement consistent with the environmental document. No work on final engineering and design may occur prior to approval of the environmental document.

Existing Facility - Describe and give reason for request:

County Trunk Highway D, (CTH D), is a 2 lane rural roadway that carries 637 vehicles a day and is functionally classified as a Major Collector. It was last improved in 2014 consisting of a thin pavement overlay to hold the roadway together until it can be reconstructed. The project is located in the City of Princeton. The existing asphalt is in poor condition and is cracked, rutted and patched. There are drainage issues and existing sidewalk located along part of the project. The pavement width is 22 feet and shoulder width is 2 feet constructed of pavement and gravel. There is lighting located in spot locations.

Proposed Improvement - Nature of work:

The proposed improvement is a reconstruction project with approximately 0.35 miles of rural cross section and the remainder urban cross section to current standards. The proposed improvement may include but is not limited to the following; common excavation, base aggregate, asphaltic pavement, curb and gutter, sidewalk, storm sewer, box culvert, culvert pipes and landscaping items. Also required is permanent and temporary pavement marking and signing and standard lighting. The City of Princeton will also replace sanitary and water utilities at their cost. Bicycle and pedestrian accommodations will be investigated during design.

Describe non-participating work included in the project and other work necessary to completely finish the project that will be undertaken independently by the Municipality. Please note that non-participating components of a project/contract are considered part of the overall project and will be subject to applicable Federal requirements:

No Non-Participating work has been identified at this time.

STP-Rural Standard SMA

The Municipality agrees to the following 2015-2020 STP-Rural project funding conditions:

Project design and construction costs are funded with 80% federal funding up to a maximum of **\$1,139,040** when the municipality agrees to provide the remaining 20% and any funds in excess of the **\$1,139,040** federal funding maximum, in accordance with the STP-Rural program guidelines. Real estate and non-participating costs are 100% the responsibility of the Municipality. Any work performed by the Municipality prior to federal authorization is not eligible for federal funding. The Municipality will be notified by the State that the project is authorized and available for charging.

This project is currently scheduled in State Fiscal Year 2020. **In accordance with the State's sunset policy for STP-Rural projects, the subject 2015-2020 STP-Rural improvement must be constructed and in final acceptance within six years from the start of State Fiscal Year 2017, or by June 30, 2022.** Extensions may be available upon approval of a written request by or on behalf of the Municipality to WisDOT. The written request shall explain the reasons for project implementation delay and revised timeline for project completion.

The dollar amounts shown in the Summary Funding Table below are estimates unless explicitly identified as maximum amounts. The final Municipal share is dependent on the final Federal participation, and actual costs will be used in the final division of cost for billing and reimbursement.

PHASE	SUMMARY OF COSTS				
	Total Est. Cost	Federal Funds	%	Municipal Funds	%
ID 6425-00-00*					
Design	\$135,600	\$108,480	80%	\$27,120	20%
State Review Design	\$33,900	\$27,120	80%	\$6,780	20%
Design Subtotal	\$169,500	\$135,600	80% Max	\$33,900	20% Bal
ID 6425-00-70 *					
Participating Construction	\$1,130,000	\$904,000	80%	\$226,000	20%
Non-Participating Construction			0%		100%
State Review Construction	\$124,300	\$99,440	80%	\$24,860	20%
Construction Subtotal	\$1,254,300	\$1,003,440	80% Max	\$250,860	20% Bal
Total Est. Cost Distribution	\$1,423,800	\$1,139,040	Max	\$284,760	Bal

* This project has STP – Rural federal funding maximum of **\$ 1,139 040**.

This request is subject to the terms and conditions that follow (pages 3-7) and is made by the undersigned under proper authority to make such request for the designated Municipality and upon signature by the State and delivery to the Municipality shall constitute agreement between the Municipality and the State. No term or provision of neither the State/Municipal Agreement nor any of its attachments may be changed, waived or terminated orally but only by an instrument in writing executed by both parties to the State/Municipal Agreement.

Signed for and in behalf of: **Green lake County** (please sign in blue ink)

Name (print): _____ Title: _____

Signature: _____ Date: _____

Signed for and in behalf of the **State** (please sign in blue ink)

Name: **Brian Gaber** Title: **WisDOT North Central Region Planning Chief**

Signature: _____ Date: _____

STP-Rural Standard SMA

GENERAL TERMS AND CONDITIONS:

1. All projects must be in an approved Transportation Improvement Program (TIP) or State Transportation Improvement Program (STIP) prior to requesting authorization.
2. Work prior to federal authorization is ineligible for federal funding.
3. The Municipality, throughout the entire project, commits to comply with and promote all applicable federal and state laws and regulations that include, but are not limited to, the following:
 - a. Environmental requirements, including but not limited to those set forth in the 23 U.S.C. 139 and National Environmental Policy Act (42 U.S.C. 4321 et seq.)
 - b. Equal protection guaranteed under the U.S. Constitution, WI Constitution, Title VI of the Civil Rights Act and Wis. Stat. 16.765. The municipality agrees to comply with and promote applicable Federal and State laws, Executive Orders, regulations, and implementing requirements intended to provide for the fair and equitable treatment of individuals and the fair and equitable delivery of services to the public. In addition the Municipality agrees not to engage in any illegal discrimination in violation of applicable Federal or State laws and regulations. This includes but is not limited to Title VI of the Civil Rights Act of 1964 which provides that "no person in the United States shall, on the ground of race, color, or national origin, be excluded from participation in, be denied the benefits of, or be subjected to discrimination under any program or activity receiving Federal financial assistance." The Municipality agrees that public funds, which are collected in a nondiscriminatory manner, should not be used in ways that subsidize, promote, or perpetuate illegal discrimination based on prohibited factors such as race, color, national origin, sex, age, physical or mental disability, sexual orientation, or retaliation.
 - c. Prevailing wage requirements, including but not limited to 23 U.S.C 113 and Wis. Stat. 103.50.
 - d. Buy America Provision and its equivalent state statutes, set forth in 23 U.S.C. 313 and Wis. Stat. 16.754.
 - e. Competitive bidding requirements set forth in 23 U.S.C 112 and Wis. Stat. 84.06.
 - f. All applicable DBE requirements that the State specifies.
 - g. Federal Statutes that govern the Surface Transportation Program, including but not limited to 23 U.S.C. 133.
 - h. General requirements for administering federal and state aids set forth in Wis. Stat. 84.03.

STATE RESPONSIBILITIES AND REQUIREMENTS:

4. Funding of each project phase is subject to inclusion in Wisconsin's approved 2015-2020 STP-Rural program. Federal funding will be limited to participation in the costs of the following items, as applicable to the project:
 - a. The grading, base, pavement, and curb and gutter, sidewalk, and replacement of disturbed driveways in kind.
 - b. The substructure, superstructure, grading, base, pavement, and other related bridge and approach items.
 - c. Storm sewer mains necessary for the surface water drainage.

STP-Rural Standard SMA

- d. Catch basins and inlets for surface water drainage of the improvement, with connections to the storm sewer main.
 - e. Construction engineering incident to inspection and supervision of actual construction work (except for inspection, staking, and testing of sanitary sewer and water main).
 - f. Signing and pavement marking.
 - g. New installations or alteration of street lighting and traffic signals or devices.
 - h. Landscaping.
 - i. Preliminary Engineering and design
 - j. Management Consultant and State Review Services
5. The work will be administered by the State and may include items not eligible for Federal participation.
6. As the work progresses, the State will bill the Municipality for work completed which is not chargeable to Federal funds. Upon completion of the project, a final audit will be made to determine the final division of costs. If reviews or audits show any of the work to be ineligible for Federal funding, the Municipality will be responsible for any withdrawn costs associated with the ineligible work.

MUNICIPAL RESPONSIBILITIES AND REQUIREMENTS:

7. Work necessary to complete the 2015-2020 STP-Rural improvement project to be financed entirely by the Municipality or other utility or facility owner includes the items listed below.
- a. New installations of or alteration of sanitary sewers and connections, water, gas, electric, telephone, telegraph, fire or police alarm facilities, parking meters, and similar utilities.
 - b. Damages to abutting property after project completion due to change in street or sidewalk widths, grades or drainage.
 - c. Detour routes and haul roads. The municipality is responsible for determining the detour route.
 - d. Conditioning, if required and maintenance of detour routes.
 - e. Repair of damages to roads or streets caused by reason of their use in hauling materials incident to the improvement.
 - f. All work related to underground storage tanks and contaminated soils.
 - g. Street and bridge width in excess of standards, in accordance with the current WisDOT Facilities Development Manual (FDM).
 - h. Real estate for the improvement.
8. The construction of the subject improvement will be in accordance with the appropriate standards unless an exception to standards is granted by WisDOT prior to construction. The entire cost of the construction project, not constructed to standards, will be the responsibility of the Municipality unless such exception is granted.

STP-Rural Standard SMA

9. Work to be performed by the Municipality without Federal funding participation necessary to ensure a complete improvement acceptable to the Federal Highway Administration and/or the State may be done in a manner at the election of the Municipality but must be coordinated with all other work undertaken during construction.
10. The Municipality is responsible for financing administrative expenses related to Municipal project responsibilities.
11. The Municipality will include in all contracts executed by them a provision obligating the contractor not to discriminate against any employee or applicant for employment because of age, race, religion, color, handicap, sex, physical condition, developmental disability as defined in s. 51.01 (5), sexual orientation as defined in s. 111.32 (13m), or national origin.
12. The Municipality will pay to the State all costs incurred by the State in connection with the improvement that exceed Federal financing commitments or are ineligible for Federal financing. In order to guarantee the Municipality's foregoing agreements to pay the State, the Municipality, through its above duly authorized officers or officials, agrees and authorizes the State to set off and withhold the required reimbursement amount as determined by the State from any moneys otherwise due and payable by the State to the Municipality.
13. **In accordance with the State's sunset policy for STP-Rural projects, the subject 2015-2020 STP-Rural improvement must be constructed and in final acceptance within six years from the start of State Fiscal Year 2017, or by June 30, 2022.** Extensions may be available upon approval of a written request by or on behalf of the Municipality to WisDOT. The written request shall explain the reasons for project implementation delay and revised timeline for project completion.
14. If the Municipality should withdraw the project, it will reimburse the State for any costs incurred on behalf of the project.
15. The Municipality will at its own cost and expense:
 - a. Maintain all portions of the project that lie within its jurisdiction (to include, but not limited to, cleaning storm sewers, removing debris from sumps or inlets, and regular maintenance of the catch basins, curb and gutter, sidewalks and parking lanes [including snow and ice removal]) for such maintenance through statutory requirements in a manner satisfactory to the State, and will make ample provision for such maintenance each year.
 - b. Regulate [or prohibit] parking at all times in the vicinity of the proposed improvements during their construction.
 - c. Regulate [or prohibit] all parking at locations where and when the pavement area usually occupied by parked vehicles will be needed to carry active traffic in the street.
 - d. Assume general responsibility for all public information and public relations for the project and to make fitting announcement to the press and such outlets as would generally alert the affected property owners and the community of the nature, extent, and timing of the project and arrangements for handling traffic within and around the project.
 - e. Provide complete plans, specifications, and estimates.
 - f. Provide relocation orders and real estate plats.
 - g. Use the *WisDOT Utility Accommodation Policy* unless it adopts a policy, which has equal or more restrictive controls.

STP-Rural Standard SMA

- h. Provide maintenance and energy for lighting.
- i. Provide proper care and maintenance of all landscaping elements of the project including replacement of any plant materials damaged by disease, drought, vandalism or other cause.

16. It is further agreed by the Municipality that:

- a. The Municipality assumes full responsibility for the design, installation, testing and operation of any sanitary sewer and water main infrastructure within the improvement project and relieves the state and all of its employees from liability for all suits, actions, or claims resulting from the sanitary sewer and water main construction under this agreement.
- b. The Municipality assumes full responsibility for the plans and special provisions provided by their designer or anyone hired, contracted or otherwise engaged by the Municipality. The Municipality is responsible for any expense or cost resulting from any error or omission in such plans or special provisions. The Municipality will reimburse WisDOT if WisDOT incurs any cost or expense in order to correct or otherwise remedy such error or omission or consequences of such error or omission.
- c. The Municipality will be 100% responsible for all costs associated with utility issues involving the Contractor, including costs related to utility delays.
- d. All signs and traffic control devices and other protective structures erected on or in connection with the project including such of these as are installed at the sole cost and expense of the Municipality or by others, will be in conformity with such "Manual of Uniform Traffic Control Devices" as may be adopted by the American Association of State Highway and Transportation Officials, approved by the State, and concurred in by the Federal Highway Administration.
- e. The right-of-way available or provided for the project will be held and maintained inviolate for public highway or street purposes. Those signs prohibited under Federal aid highway regulations, posters, billboards, roadside stands, or other private installations prohibited by Federal or State highway regulations will not be permitted within the right-of-way limits of the project. The municipality, within its jurisdictional limits, will remove or cause to be removed from the right-of-way of the project all private installations of whatever nature which may be or cause an obstruction or interfere with the free flow of traffic, or which may be or cause a hazard to traffic, or which impair the usefulness of the project and all other encroachments which may be required to be removed by the State at its own election or at the request of the Federal Highway Administration, and that no such installations will be permitted to be erected or maintained in the future.

LEGAL RELATIONSHIPS:

- 17. The State shall not be liable to the Municipality for damages or delays resulting from work by third parties. The State also shall be exempt from liability to the Municipality for damages or delays resulting from injunctions or other restraining orders obtained by third parties.
- 18. The State will not be liable to any third party for injuries or damages resulting from work under or for the Project. The Municipality and the Municipality's surety shall indemnify and save harmless the State, its officers and employees, from all suits, actions or claims of any character brought because of any injuries or damages received or sustained by any person, persons or property on account of the operations of the Municipality and its sureties; or on account of or in consequence of any neglect in safeguarding the work; or because of any act or omission, neglect or misconduct of the Municipality or its sureties; or because of any claims or amounts recovered for any infringement by the Municipality and its sureties of patent, trademark or copyright; or from any claims or amounts arising or recovered under the Worker's Compensation Act, relating to the employees of the Municipality and its sureties; or any other law, ordinance, order or decree relating to the Municipality's operations.

STP-Rural Standard SMA

19. **Contract Modification:** This State/Municipal Agreement can only be modified by written instruments duly executed by both parties. No term or provision of neither this State/Municipal Agreement nor any of its attachments may be changed, waived or terminated orally.
20. **Binding Effects:** All terms of this State/Municipal Agreement shall be binding upon and inure to the benefits of the legal representatives, successors and executors. No rights under this State/Municipal Agreement may be transferred to a third party. This State/Municipal Agreement creates no third-party enforcement rights.
21. **Choice of Law and Forum:** This State/Municipal Agreement shall be interpreted and enforced in accordance with the laws of the State of Wisconsin. The Parties hereby expressly agree that the terms contained herein and in any deed executed pursuant to this State/Municipal Agreement are enforceable by an action in the Circuit Court of Dane County, Wisconsin.

PROJECT FUNDING CONDITIONS

22. **Non-Appropriation of Funds:** With respect to any payment required to be made by the Department under this State/Municipal Agreement, the parties acknowledge the Department's authority to make such payment is contingent upon appropriation of funds and required legislative approval sufficient for such purpose by the Legislature. If such funds are not so appropriated, either the Project Sponsor or the Department may terminate this State/Municipal Agreement after providing written notice not less than thirty (30) days before termination.
23. **Maintenance of Records:** During the term of performance of this State/Municipal Agreement, and for a period not less than three years from the date of final payment to the Project Sponsor, records and accounts pertaining to the performance of this State/Municipal Agreement are to be kept available for inspection and audit by representatives of the Department. The Department reserves the right to audit and inspect such records and accounts at any time. The Project Sponsor shall provide appropriate accommodations for such audit and inspection.

In the event that any litigation, claim or audit is initiated prior to the expiration of said records maintenance period, the records shall be retained until such litigation, claim or audit involving the records is complete.

24. The Municipality agrees to the following 2015-2020 STP-Rural project funding conditions:
 - a. **ID 6425-00-00:** Design is funded with 80% federal funding up to a maximum of **\$135,600**, when the municipality agrees to provide the remaining 20% and any funds in excess of the **\$135,600** federal funding maximum. This phase includes Plan Development, Management Consultant Review, and State Review. The work includes project review, approval of required reports and documents and processing the final PS&E document for award of the contract.
 - b. Real estate is funded 100% by the Municipality.
 - c. **ID 6425-00-70: Construction:**
 - i. Costs for the reconstruction project includes the following major work items: pulverizing existing pavement, moderate grading, base course, pavement, topsoil and landscaping items and all other items necessary to complete the project are funded with 80% federal funding up to a maximum of **\$1,003,440**, when the municipality agrees to provide the remaining 20%, and any funds in excess of the **\$1,003,440** federal funding maximum.
 - ii. Non-participating costs are funded 100% by the Municipality. Costs include construction delivery.
 - iii. Costs for this phase include an estimated amount for state review activities, to be funded 80% with federal funding and 20% by the Municipality.

Questions? 1.800.258.7246

[home](#) | [about us](#) | [view cart](#) | [search](#)

Follow us on:



SEMINAR FINDER

State:

ZIP:

Sign Up for Emails or Special Offers

Email:

ZIP:

- Seminars
- Webinars
- STAR12
- Corporate Training
- Resource Store
- FREE Resources
- STAR12 Login

Leadership Skills for Women

A ground-breaking professional development seminar designed to address the toughest challenges facing women leaders and supervisors today!

Bring this training to your team

Program Description:

One-Day Seminar

Dear Fellow Leader:

We've never met, but you and I have plenty in common. We're women in leadership positions. Despite tremendous advances women professionals have experienced over the years, we still find ourselves facing tough challenges. We get mixed messages and mixed reactions as we take on leadership roles. And all too often, we get only mixed results when leading others.

That's why I'm eager to share news of an incredible leadership training opportunity for women like us: **Leadership & Management for Women**. Developed by the National Businesswomen's Leadership Association, this intensive one-day workshop is designed to build on our inherent talents and strengths to help us become more effective, more confident and more successful.

In this results-focused program, you will learn ...

- Strategies for effective leadership at all levels — in every situation
- Discipline and feedback skills for improving employee performance
- Supervision techniques guaranteed to earn you cooperation and respect
- Assertive communication techniques to ask for what you need directly and tactfully
- How to sell your ideas in meetings and to the boss
- Tools for handling confrontation and conflict with ease
- Motivation strategies for bringing out the best in your employees
- Lessons and insight from women in top leadership positions

That's just the beginning! You'll discover how to disagree firmly but tactfully without backing down. How to effectively delegate. How to turn around specific unwanted employee behaviors. How to keep your ideas from being drowned out by louder male voices in meetings.

What's more, you'll develop a Personal Action Plan — a road map to put you on the fast track to achieving your leadership goals. In a relaxed, stress-free environment, you'll learn shoulder to shoulder with other professional women from your area, networking with leaders you'd never have had the chance to meet otherwise. You'll leave motivated and energized, armed with must-have leadership tools guaranteed to make a dramatic, immediate impact on your results.

Don't miss this chance to build your skills fast to become a highly effective, inspiring leader others are eager to follow!

QUICK LINKS

- [STAR12](#)
- [Corporate Training](#)
- [CEU/CPE Information](#)
- [Cancellation Details](#)

SEMINAR SCHEDULE

Click "+" to see cities

Arkansas	+
Connecticut	+
Iowa	+
Illinois	+
Indiana	+
Kansas	+
Kentucky	+
Louisiana	+
Maryland	+
Michigan	+
Missouri	+
Montana	+
Nebraska	+
New Jersey	+
New York	+
Ohio	+
Oklahoma	+
Pennsylvania	+
Texas	+
Wisconsin	-

- 07/25 - Madison
- 07/26 - La Crosse
- 07/27 - Appleton
- 07/28 - Green Bay
- 07/29 - Brookfield
- 08/05 - Racine

Your partner in leadership success,

Susan Brown
NBLA leader

P.S. Invest just ONE DAY from your busy schedule, and you'll gain essential techniques and strategies sure to bring you success for years to come.

Agenda:

A Woman's Unique Strength as a Leader: How to Develop Yours!

- Understanding how your strengths play into today's management style
- Major myths about women in leadership you should erase from your consciousness
- What's your Power Profile? An insightful self-assessment
- Why you can't be everyone's best pal, and other missteps women leaders must avoid
- Taking risks, taking responsibility, taking action — and other crucial leadership lessons from today's most successful women in business

Winning Motivation Techniques and Other Must-Have Leadership Tools

- Proven techniques for motivating your employees to give their all
- The power of sincere praise to motivate, build loyalty and keep good employees
- The art of delegation — and why some women find it so tough
- Key negotiation strategies for getting what you want without being a steamroller
- Top 10 Tools: Goal-setting, coaching, team-building and 7 other supervisory essentials sure to earn you respect from employees, peers and top brass

Criticism and Discipline for Improved Employee Performance

- 13 reasons why people don't do what they're supposed to do and what you can do about it
- When — and how — to confront employee performance problems
- How-to's for giving constructive feedback that results in improved performance, not anger and defensiveness
- Tips for turning around attitude problems and other specific unwanted behaviors
- Discipline techniques that really work — and measures guaranteed to fall flat

Assertive Communication: Your Key to Leadership Success

- Assertive communication: How to be direct in a tactful, professional manner
- Be heard! Proven strategies for getting your ideas heard in meetings — even when louder male voices threaten to drown you out
- Uncomfortable speaking in front of others? Power speaking skills to help you shine
- How to say “no” without feeling guilty
- Active listening tips that double your communication effectiveness

Effectively Handling Confrontation, Conflict and Other Uncomfortable Situations

- How to disagree firmly but tactfully, without backing down at the last minute
- Why women so often fear confrontation — and a step-by-step method for calmly facing it head on
- The 3-point A.C.E. method to conflict resolution
- Quick-thinking strategies for handling cheap shots and hardball tactics
- Tips for neutralizing paralyzing emotions so you can think straight when things get heated

Dealing With the Diversity Of the Workplace

- Avoid the pitfalls when supervising those much younger or older than you
- Build a framework for creating a successful organizational culture from your staff's diversity
- Strategies that get past gender bias: What you can do when issues arise
- Plain ol' difficult people ... are they really difficult or just different?
- Create an atmosphere of inclusion for workers with disabilities
- Learn how to supervise those with different work ethics, styles and perspectives

Building Credibility and Increasing Your Visibility to Get Ahead

- Credibility plus: Tips for communicating the image of a total professional

- Common land mines that can damage a woman's leadership credibility — and how to sidestep them
- Strategies for increasing your visibility, inside and outside your organization
- How to toot your own horn to showcase your accomplishments without being obnoxious
- Expanding your connections through the power of networking: How to make it work

Onward and Upward: Creating a Success Roadmap

- Looking beyond the boundaries of self-limiting perspectives to determine what your version of success really is
- Be prepared! Gaining the key skills top management looks for in women they promote
- How a mentor can pave the way for you — don't be afraid to ask!
- Guarding your personal time: The secret to avoiding management burn-out and stress overload
- Developing your Personal Action Plan

CUSTOMER SERVICE: 1.800.258.7246

Seminars
Webinars
STAR12
Corporate Training
Resource Store
FREE Resources

Training Solutions
Courses/Certifications
Trainers
GSA / Public Sector
Clients
Download our FREE catalog



1.800.258.7246



GREEN LAKE COUNTY HIGHWAY COMMISSIONER

Amy M. Brooks, P.E.
Highway Commissioner

Office: 920-294-4060
Fax: 920-294-4066
Email: abrooks@co.green-lake.wi.us

Commissioners Report Highway Committee Meeting June 8, 2016

HIGHWAY DEPARTMENT ACTIVITIES:

- Highway crews have been shouldering; patching; ditching projects; crack sealing; surface maintenance as needed; township work; PbM shouldering project; chip seal projects.

- **Anticipated Activities:**

June - Surface maintenance as needed; chip sealing projects; PbM crack sealing projects; CTH M reconstruction; mowing; township work.

July - Surface maintenance as needed; CTH M reconstruction; mowing.

Aug - Surface maintenance as needed; CTH M reconstruction; mowing.

- **Permits Issued:**

	<u>May 2016</u>	<u>May 2015</u>	<u>Year-to-Date 2016</u>	<u>Year-to-Date 2015</u>
Driveway/ROW	1	0	7	3
Multi Trip	0	0	17	15
Utility	3	1	11	11
Overweight/size	0	1	2	4
IoH	0	3	3	13

- **Trainings/Conferences/Meetings Attended:**

<u>Training/Conference/Meeting</u>	<u>Who Attended</u>
Snow Plow Operators Certification Review Committee	Brooks
Highway Safety Days	All Staff
NC Region Commissioner Meeting	Brooks

DOT REQUEST FOR SERVICES/PROJECTS:

- DMA – STH 44 – chip seal
- STP Rural – SMA – CTH D

ROAD REVIEW/ PROJECT STATUS:

- Gillette Drive Bridge - project began May 2, 2016. Road closed, no posted detour.

REVIEW CRASH DATA:

	<u>May 2016</u>	<u>April 2015</u>	<u>Year-to-Date 2016</u>	<u>Year-to-Date 2015</u>
Deer	16	13	78	109
Other/Weather	2	1	11	13
County Damage	1	5	12	36

OTHER: